

# Great Barton Newsletter



*Spring 2026*

Photography by Bob Butler

## Parish Council – Useful Information

Planning	Full council
9th Mar	16th Mar
13th April	20th April (AGM)
11th May	18th May
8th June	15th Jun

All members of the public are welcome and encouraged to attend council meetings.

For more information contact the Clerk.

See our website for all agendas and previous meeting minutes.

Stay connected with village news, events, and updates - subscribe to our village email service today. <http://greatbarton-pc.gov.uk> or email the clerk at: [clerk@greatbarton-pc.gov.uk](mailto:clerk@greatbarton-pc.gov.uk)

### Parish Council Contact Details:

**Chair Maggie Dunn** - [chair@greatbarton-pc.gov.uk](mailto:chair@greatbarton-pc.gov.uk)  
**Vice Chair Elaine Read** - [elaineread@greatbarton-pc.gov.uk](mailto:elaineread@greatbarton-pc.gov.uk)  
**Cllr Andy Baker** - [andybaker@greatbarton-pc.gov.uk](mailto:andybaker@greatbarton-pc.gov.uk)  
**Cllr Gwyn James** - [gwynjames@greatbarton-pc.gov.uk](mailto:gwynjames@greatbarton-pc.gov.uk)  
**Cllr Peter Fisk** - [clerk@greatbarton-pc.gov.uk](mailto:clerk@greatbarton-pc.gov.uk)  
**Cllr Jenny Stone** - [jennystone@greatbarton-pc.gov.uk](mailto:jennystone@greatbarton-pc.gov.uk)  
**Parish Clerk Jessica Langley** - [clerk@greatbarton-pc.gov.uk](mailto:clerk@greatbarton-pc.gov.uk)

### District and County Councillors Contact Details:

**West Suffolk Council – Cllr Sarah Broughton**  
 01284 787327 / 07929 305787  
[sarah.broughton@westsuffolk.gov.uk](mailto:sarah.broughton@westsuffolk.gov.uk)

**West Suffolk Council - Cllr Rebecca Hopfensperger**  
 07876 683516  
[rebecca.hopfensperger@westsuffolk.gov.uk](mailto:rebecca.hopfensperger@westsuffolk.gov.uk)

**Suffolk County Council – Cllr Rebecca Hopfensperger**  
 07545 423826  
[Rebecca.hopfensperger@suffolk.gov.uk](mailto:Rebecca.hopfensperger@suffolk.gov.uk)

## Newsletter Information

### Distribution

**Tracey Butt 01284 787386**

Contact Tracey if you are willing to help distribute the newsletter

Deadline for submissions for the **Summer Edition is 19th May 2026**

**Minutes of Parish Council meetings are available here:**

<https://greatbarton-pc.gov.uk/parish-council/minutes/>

Published by Great Barton Parish Council

Photography Copyright GBPC

**Front cover photo submitted by Bob Butler**

Thanks to everyone who provided photos for this edition.

**Website: <http://greatbarton-pc.gov.uk/>**

### Contact details for our Village Emergency Team

John Roe	07845 529923	01284 787749
David Murray	07825 172446	01284 788606
Clare Hopwood	07787 516401	
Josh Pirt	07961 863866	01359 231011
Simon Stockdale	07572 037615	N/a
Eddie Gibson	07484 602289	01284 788384
Nicola Crouch	07739 852714	01284 788611
Maggie Dunn	07977 875882	01284 787357

## Disclaimer Notice

Please note that Great Barton Parish Council is responsible for the maintenance of Icepits Wood; however, we have **no** association with the homemade bike track inside the area.

For your safety, we strongly we advise all members of the public to **avoid the jumps**, as they are neither inspected nor certified as safe. The Parish Council accept **no liability** for any loss or injury occurring on these jumps or anywhere within Icepits Wood.

Many thanks, Great Barton Parish Council  
[clerk@greatbarton-pc.gov.uk](mailto:clerk@greatbarton-pc.gov.uk)



## Chairs Update

Hello again hope you managed to evade the various illnesses that have been doing the rounds., there seems to have been so many. It's good to see that the spring bulbs are coming through and we could do with a bit less rain.

Your Parish council have been busy doing what we need to do in the village I will take you through the main highlights.

### **The NE Development/The Severals**

This site has changed hands from Berkley Homes to Vistry. They are aiming to bring this forward quickly, so we all need to make sure we are aware of what is happening. They currently have a planning application in for an access road off the A143. It is close to The Avenue junction and therefore in a dangerous place. We all need to look at the plans and make comment on the West Suffolk Planning website if you don't agree with what's happening. We cannot change the planning permission for the homes as it was granted in 2022 following a Public Enquiry so therefore granted by the Secretary of State. There is more on this in the Newsletter.

We all need to make sure we are aware of what is happening in the village, either through the Newsletter, The Village Website, The Facebook Page or by signing up for the Email round robin from the Clerk. You can do this on our website <https://greatbarton-pc.gov.uk/home/email-service-subscription/> or contact Jess the clerk on [clerk@greatbarton-pc.gov.uk](mailto:clerk@greatbarton-pc.gov.uk)

### **The Triangle Development**

We have no further information on this at the present time.

### **Elms Meadow Footpath**

We hope to have an official opening of this in March/April when the weather is better, it is usable but please keep to the footpath.

### **Icepits Wood**

Please use this responsibly we have had reports of damage and felling of trees this is not permitted for any reason other than by the council for safety reasons. This is Criminal Damage and it is a criminal offence and will be reported to the Police.

*Maggie Dunn*

## **PLEASE COULD YOU HELP?**

**Could you spare 2 hours, 11-30am to 1.30pm one Wednesday a month to help serve lunch to mostly senior citizens at the Church Institute in Gt Barton. This is an outreach project supported by Holy Innocent Church and would be on a voluntary basis.**

**A free lunch is available to all helpers.**

**If you think you are able to help, please contact Peter Robinson for details. Tel. 07814 946841 or email [admichurch64@gmail.com](mailto:admichurch64@gmail.com)**

*Thank you*

# Parish Council

## Councillor Interviews

### Peter Fisk

I'm Peter Fisk, and I've been proud to serve on the Great Barton Parish Council for nearly 50 years. Over that time, I've developed a strong interest in our local environment — especially the care and protection of trees — as well as the planning matters that help shape the future of our village. These are areas I've always felt passionate about, and I've worked hard to ensure Great Barton grows in a thoughtful and balanced way.

One of the great honours of my life was being selected to carry the Jubilee torch, a moment that deepened my sense of connection to our community and its history.

I was born in Great Barton, and I remain committed to supporting the village, protecting its character, and helping residents navigate the issues that matter to them. It's a privilege to continue serving a place that means so much to me.

### Maggie Dunn

I am married to Andy and have been for 46 years. We have lived in Great Barton for 30 years. I have been on the Parish Council for 20 years and the reason I am on the Council is that I love the village and I want to do the best for the residents and the village. I was in the Suffolk Police for 30 years where I worked in several different departments and I have also worked for the Home Office and The Department for Work and Pensions.

We have two small dogs and we like taking them out. I also love gardening and like to potter in the garden and grow some of my own fruit and vegetables. I am also a governor at Great Barton Primary Academy. I love working with the children and I go in to help with Forest School, reading and being of use where I can, the school children being the next generation.

### Gwyn James

I am 64, married to Vivien. Living with us, we have a daughter Megan who is a Pharmacist and granddaughter, Lalita who studies at West Suffolk College.. My father was Welsh, I was born in Birmingham and studied as a Synthetic Chemist at Nottingham. After working for 35 years for ICI/PPG in the Paint Industry in Stowmarket, I retired at the end of 2019. We have lived in West Suffolk since 1997, moving to Gt. Barton in 2011. We really enjoy living here as it has a very good school, friendly people, good facilities/clubs and is great for walking and cycling.

I have been a Parish Councillor for the last 4 years and thoroughly enjoyed the experience, particularly being involved in supporting the local community. My passion has been working with local volunteers, SCC and the Police in reducing traffic speeds in Great Barton.

### Jenny Stone

I have lived in Suffolk for 45 years and in Great Barton for 7 of those.

I have three grown up children and two grandchildren. I am a member of Great Barton W.I. where I have made a lot of lovely friends, I joined the Parish Council after going to the meetings as a resident for some months.

I'm very proud to have managed to get an outside gym installed for the village which seems to be very popular. The thing about being a Parish Councillor is that you don't need any qualifications just a real interest in what is happening in your village and a willingness to listen to what people are telling you. I'm on the planning committee and am really interested in the way that the village develops.

I've met a lot of very interesting people and have come to the conclusion that everyone no matter what your background has something to offer. Come and join us we're a very friendly team, and make a difference to your village.

### Andy Baker

I moved to Suffolk in 1985 from Nottingham, working for a Veterinary Pharmaceutical firm that was then based in Bury St Edmunds.

We moved to Great Barton in 2008, just before my daughter was born. She went to Great Barton Pathways, Great Barton Primary School and then Thurston Community College. She is now studying Beauty Therapy at West Suffolk College. My son followed in her footsteps 18 months later and is currently doing his GCSE's at TCC. He plans to do Culinary Arts at WSC later this year.

I currently work full time, mainly home based. Personally, I love to cook, travel, cycle and for the last 2 years go to the gym regularly to maintain my health....to the point I may even do a Hyrox event sometime soon....but still plucking up the courage!!!

I joined the Parish Council in 2018 / 2019 ??????. WHY - I wanted to have an input / impact on how our large and mostly disparate village evolves. In particular, the A143 and local road network, footpaths and bridleways and how they can link Great Barton to other local communities and our town. Plus new developments inside and outside of our Parish that influence our location.

### Councillor Interviews

#### Elaine Read

Elaine Read Vice Chair - I have been lucky enough to have lived in Great Barton for 21 years. I became a Parish Councillor approximately two and a half years ago after attending Meetings as a Member of the Public for two years. At that point I decided I may contribute more as a Councillor than merely an observer. I was reprimanded by one of the ex Councillors for not joining earlier but personally I feel it must be the right time as it can be quite time consuming - it is not just turning up for one meeting per month. It helps to keep abreast of topics which will affect our village. You may have read interviews I have submitted on behalf of residents in the Newsletters or seen me out on Speed Watch. Those of you who came to the coffee morning for the late Queen's Jubilee and King Charles's Coronation will know me and my fellow Councillor Jenny Stone who along with WI arranged those events.

You don't have to be good at everything, there are six of us, we all do different things. I decided to go onto the Planning Committee as I am interested in the development in the village. Each month three of us go to view planning applications and comment on conformity to the Neighbourhood Plan or new Local Plan rulings. I have taken part in the Triangle Task Force although I must confess this has been an uphill struggle and is still unsettled and of course now, the Land North East of Bury has caused some concerns in the village with the recent Temporary Access Application.

We also rely on the expertise of the Public which is invaluable and I for one cannot express my appreciation enough for their help.

We have a very capable Parish Clerk who keeps us abreast of issues via email.

Sometimes issues drag on which can become frustrating but if you have the tenacity and enthusiasm to follow through it can be a very rewarding experience for anyone keen to join.

### PHONE BOX BOOK EXCHANGE

#### Liveremere Road

Our red phone box on Liveremere Road has been transformed into a small community library. Everyone is welcome to take a book, leave a book, or simply browse. It's a lovely way to share stories, recycle books, and keep this iconic landmark alive.

A few gentle guidelines help keep it enjoyable for all:

- Please donate books in good condition
- Avoid leaving large boxes or bags of books
- Keep the door closed to protect the shelves from the weather
- Children's books are very welcome

Thank you for helping this little library thrive.

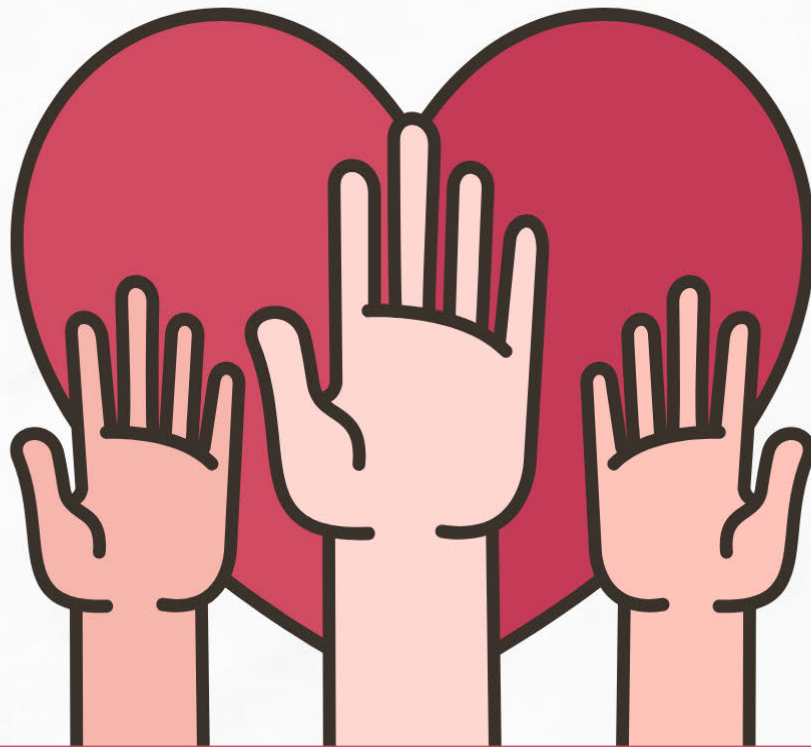
### Bury St Edmunds Mobile Library Service

**Route 12** - Thu 9 Apr 2026 Thu 7 May 2026  
12C – Brand Road – 10:35 -10:45

**Route 1** - Tue 24 Mar 2026 Tue 21 Apr 2026  
1B – Oakhampton House – 10:00-10:20  
1C - School Road – 10:25-10:50

[Mobile libraries | Suffolk Libraries](#)

Did you know that if you are a mobile library user you can have the books for 8 weeks rather than the usual 4?  
I discovered this by chance back in April!



**Join your**

**PARISH COUNCIL  
AND HELP SHAPE  
YOUR VILLAGE**

- Use your skills & knowledge
- Meet local people
- Bring idea's to life

 Contact Maggie Dunn - Chair

 01284 787357

 [chair@greatbarton-pc.gov.uk](mailto:chair@greatbarton-pc.gov.uk)







## Join the Great Barton Tidy Up Team!



Do you want to make a tangible difference in your village and meet like-minded neighbours? Great Barton residents are coming together to keep our community clean, green, and welcoming—and we'd love for you to join us!

### What's involved:

-  Community cleanup events – Gather at the village hall, collect your gear, and head out in friendly teams to tidy up footpaths, verges, and green spaces.
-  Volunteer friendly set up – We provide litter pickers, bags, and guidance. Just bring your gloves and enthusiasm!
-  Family inclusive – Children are welcome under supervision, making this a fun, family-friendly activity.
-  Local environmental impact – Your efforts help keep Great Barton safe, clean, and beautiful for everyone.

### General Maintenance and Tidying: Care for Our Shared Spaces

Keeping Great Barton clean and welcoming is more than just picking up litter at events it's about everyday care and community pride. By adopting simple maintenance routines, everyone contributes to a safer, greener, and more enjoyable environment.

### Daily and Weekly Actions

**Clear Litter Promptly:** Dispose of personal and public litter in the nearest bins to prevent overflow.

**Tidy Frontages and Pathways:** Sweep leaves, remove weeds from pavements, and ensure hedges and plants do not block footpaths or access points.


**Secure Waste:** Use bins with lids to prevent wind-blown litter and discourage pests.

**Check Local Green Spaces:** When walking in the village, identify any minor maintenance needs such as fallen branches or damaged benches and report them to the council or community team.

### Why join?

- Make a positive impact on your community
- Get some fresh air and gentle exercise
- Meet neighbours who care about Great Barton
- Be part of a proud, hands-on volunteer team
- Equipment Provided

**Come along, roll up your sleeves, and help keep Great Barton looking its best!**

 Regular events throughout the year – check our local noticeboard or contact [clerk@greatbarton-pc.gov.uk](mailto:clerk@greatbarton-pc.gov.uk) to find out the next date!



**Community Litter Pick date – 18th April**  
*with refreshments afterwards*

## Blackbourne U3A



Blackbourne U3A is part of a UK-wide movement which brings together people, who are no longer in full-time employment, to meet new friends, develop their interests and pass their expertise onto others in a friendly and informal environment. Members are drawn from villages to the east of Bury St Edmunds including Great Barton. We have an interesting programme of speakers at our monthly lectures held at the New Green Centre, Thurston. The up and coming programme includes:

**2nd March 2026** - World of Auctions and Antiques, Ed Crichton from Lacy Scott

**7th April 2026** Adventure, Activism and the Climate Crisis, Edward Gildea

**5th May 2026** All about Scams, Rosemary Kemp from Stowmarket CAB

We have over 20 interest groups, run by members, including a photography group and quilting group that meet at Great Barton Village Hall. Annual membership is £10 which will provide access to the monthly lectures, interest groups, overseas travel and outings to theatres and gardens. As part of a wider national body workshops and on-line learning for members are also on offer.

If this interests you details can be found at our website [www.blackbourne-u3a.org.uk](http://www.blackbourne-u3a.org.uk), by emailing our membership secretary at [membershipsecretary@blackbourne-u3a.org.uk](mailto:membershipsecretary@blackbourne-u3a.org.uk).



*Allison's*  
EATERY


Great Barton CE Primary  
and  
Allison's Eatery  
presents...

# RE-FILL POP-UP SHOP

ALLISON, WHO OWNS A RE-FILL SHOP AT HER PLANT-BASED VEGAN CAFE ON ST. OLAVES ROAD IN BSE, IS RUNNING THE SHOP FOR US AND OFFERING US 7.5% OF ALL PROCEEDS.

BRING YOUR OWN CONTAINERS (APART FROM DRINK BOTTLES) AND FILL UP ON ESSENTIALS LIKE LAUNDRY DETERGENT, DISHWASHING LIQUID, AND ANTIBACTERIAL HAND SOAP, ALL WHILE CONTRIBUTING TO A GREENER PLANET.

 BY THE PUPIL GATE - 15:00- 15:45

 3RD THURSDAY OF EACH MONTH (TERM-TIME ONLY)





# Great Barton CE Primary School Newsletter

February 2026

[www.greatbartonprimaryschool.co.uk](http://www.greatbartonprimaryschool.co.uk)

This edition of the newsletter was written by some of our year 6 pupils who wanted to share our work on Energy this term.

## Energy

Our second sustainable goal focuses on energy. We have also been thinking about ways we save and not waste energy in our lives.

Did you know, the average UK household wastes a significant amount of energy per day? Astoundingly, bad habits, such as leaving water running or not closing outside doors when the heating is on, can lead to up to 20 – 30% of your energy being wasted each day.

Great Barton Primary Academy has been involved in an environmental project named Our Schools Our World, which is aiming to educate children across the county with information on climate change and how to tackle it. They are promoting sustainability; developing young changemakers to make the planet a better place. Their vision is "To use the power of education to advance environmental literacy and engagement to contribute to a more equitable and sustainable future."

Have you heard of the terms non-renewable and renewable? Non-renewable energy sources are: coal, gas, oil and nuclear. These can damage our innocent planet by heating it up with greenhouse gases like carbon dioxide, a problem which is called climate change. Furthermore, once they are used, they are gone forever because they are made from plants and fossils that have been squished down into the ground over millions of years. Around 80% of the global population use non-renewable energy.

But we do have other options. Renewable energy sources (which include solar, wind and water) don't harm the environment. Also, they can be used again and again!

We are a very lucky country at the moment; the effects of climate change aren't affecting us too adversely. However, more tropical countries such as: Southeast Asia, the Caribbean, and Central America are being greatly affected. But hold your horses, it won't stay like this forever..Have you ever noticed the local weather getting more extreme? Have you seen more flooding near our village? This problem can be tackled though, if you step up and challenge yourself to doing your bit in helping save our planet. Don't fret though, if you are stuck for ideas, just keep reading..

Our Top Tips for Saving energy:

- Turn lights off when you leave a room.
- Have a four-minute shower or less.
- Switch off plugs at the socket.
- Dry laundry using sunshine whenever possible.
- Close doors when the heating is on.
- LED lightbulbs consume 80% less energy.
- Turn off taps when you are brushing teeth.
- Try to get solar panels on your roof.
- If you can, buy an electric vehicle. Or walk, cycle or car share.

All in all, we can save the world if we put our minds to it, but the seas are rising and the ice caps are melting, so we must act now!

Have courage, as we can still change our future. Will you come on this journey with our school? Remember, small changes make a big difference!

By Adelaide, Logan, Henry L and Isla, Osprey Class.



## Village Hall Management Committee

If you would like to hire the hall please contact:  
**Diana Bilverstone** [diana.74@hotmail.co.uk](mailto:diana.74@hotmail.co.uk)  
<http://greatbartonvh.onesuffolk.net/>

The Hall committee is always looking for people willing to help with hall management.

## GREAT BARTON LUNCHEON CLUB

We are a Luncheon Club which meets at Great Barton Village Hall  
**on the second Friday of each Month (except in August).**

Members are welcomed with either a glass of sherry or fruit juice and served with a two course meal, followed by tea or coffee, at a cost of **£5.00 per person** (plus a very small yearly membership fee)

We are a very friendly and welcoming group. If you are 55 years or over and live in Great Barton and would like to join us, we would be delighted to hear from you.

Please contact: **Cindy Morgan 01284 788487**  
[cynthiamorgan249@btinternet.com](mailto:cynthiamorgan249@btinternet.com)

## St Nicholas Hospice Care

because you matter

St Nicholas Hospice Care

20 June 2026 - Bury St Edmunds

Sign up with family and friends to take on a 10km or 15km walking challenge to raise funds for St Nicholas Hospice Care.

Sponsored by GREENE KING BURY ST EDMUNDS

www.stnicholashospice.org.uk/sunset-walk

St Nicholas Hospice Care's Sunset Walk returns to Bury St Edmunds on Saturday, 20 June, bringing together families, friends and colleagues for an evening of remembrance, reflection and community.

Walkers can choose between 10km and 15km routes, or take part virtually from anywhere.

Before heading out, participants gather in the Abbey Gardens for entertainment, warmups and refreshments and, creating a lively festival atmosphere. Along the route, live music, supportive volunteers and thoughtful moments of reflection make the evening one of laughter and remembrance.

Many walkers honour loved ones by decorating remembrance hearts, which are displayed at the Hospice, a reminder of why the event matters. Sponsored by Greene King, the walk supports the Hospice's mission to ensure no one faces dying, death or grief alone.

Sign up at: [stnicholashospice.org.uk/news-community/events-listing/sunset-walk/](http://stnicholashospice.org.uk/news-community/events-listing/sunset-walk/)

### GINGER BISCUITS

Ingredients	
100g salted butter cubed	250g self-raising flour
75g light brown soft sugar	1½ tbsp ground ginger
1 tbsp grated fresh ginger	1 tsp bicarbonate of soda
100g golden syrup	1 small egg yolk beaten
Method	
<p><b>Step 1</b> Heat the oven to 190C/170C fan/gas 5. Line two large baking trays with baking parchment. In a saucepan over a low heat, melt the butter, sugar, fresh ginger and golden syrup and leave to cool.</p>	
<p><b>Step 2</b> Mix the flour, ground ginger and bicarbonate of soda together in a bowl with a wooden spoon. Gradually stir in the cooled sugar mixture and the egg yolk and knead briefly to make a dough.</p>	
<p><b>Step 3</b> Roll the dough into 20g balls and put on the prepared baking trays with 3cm between each to allow for spreading. Bake for 8-10 mins until golden brown. Leave to cool on the trays for a min, then transfer to a cooling rack to cool completely.</p> <p style="text-align: center;"><i>Thank you, Jenny, for the recommendation from <a href="http://www.bbcgoodfood.com/recipes/ginger-biscuits">www.bbcgoodfood.com/recipes/ginger-biscuits</a></i></p>	

### GREAT BARTON ALLOTMENTS

As with every year, Great Barton Allotments had an abundance of crops. Great successes included soft fruits, squashes, courgettes, potatoes, legumes, onions and beautiful flowers, keeping the bees happy.

Summer '25 brought prolonged periods of hot, dry weather, and while sunshine is welcome, it has created challenges for plot holders

The polytunnel collects our valuable water which is transferred to ICBs around the site periodically but as this soon runs out, plot holders are encouraged to source their own water from home or collection through means of making a water saving construction within defined parameters. We are constantly looking for ways to protect this valuable resource and adapt to the changing climate. This includes planting at appropriate times, missing the frosts, taking advantage of rainfall, which may mean planting earlier and keeping the soil warm/covering plantings.

There have also been more plot holders using a 'no dig/limited dig' approach which has benefits including reducing the carbon release from soil, reducing weed spread and retaining some moisture especially when mulching. This all helps with having a sustainable site.

Our community of plot holders all cherish the opportunity to be outside in the fresh air, quiet surroundings with wildlife including occasional birds of prey and sometimes some not so welcome visitors! It certainly is a place of tranquillity and a give a chance to reset our minds which benefits physical and mental health. We have days when our 29 plot holders have the opportunity to come together if able, have tidy ups and a social gathering.

For further information or to be added to our waiting list, please contact [gballotments@gmail.com](mailto:gballotments@gmail.com) or visit website <https://www.gballotments.org/>



## Community News, Events & Clubs

### Great Barton Computer Club Newsletter January 2026

Time moves on and few aspects of life move on quicker than our technology. The Great Barton Computer Club have been helping the people of Great Barton and beyond for many years setting a great tradition of providing simple help and training for your technology. It seems like every year brings a new challenge and in 2025 preparing our members for the move to Windows 11 was a big one that went well with many making a transition to new computers whilst others stayed with Windows 10 under the protection of the Extended Security Updates program.

Over the years our membership has stayed strong, and we are genuinely grateful to everyone who has supported the club and helped it thrive. What hasn't changed is our aim: to offer clear, practical help in a relaxed, social setting. Many of our members tell us they learn more easily because we keep things simple, patient, and jargonfree.

Although we started out focusing mainly on Windows computers, the rise of iPads has made them a big part of what we do today. We now run extra sessions especially for beginners who want a bit more time and guidance, and these have proved very popular.

#### Looking Ahead to 2026

In March we begin a new season of beginners' meetings for both Windows and iPad users. If you'd like to get more from your technology — whether that's sending photos, organising files, staying safe online, or simply feeling more confident — you'll be very welcome.

There is a small annual membership fee which covers all of our sessions and tutorials.

This year we're also helping members get to grips with Windows 11. Many people have found it quite a change from Windows 10, so our monthly tutorials will focus on making the transition easier, alongside our usual topics such as security and useful apps.

Our iPad group continues to flourish too, with enjoyable sessions centred on the many practical and creative things an iPad can do. The latest changes to iPadOS26 have left many users feeling puzzled and in January we were able to help untangle what is a great set of improvements moving the Tablet to a new level of capability.

#### Come and Join Us

Whatever your experience level — complete beginner or seasoned user — the club is a great way to learn something new, meet people, and enjoy a relaxed afternoon out.

We meet once a month on Mondays at 2pm in the Village Hall (12.30 pm for Beginners)

If you'd like more details, please get in touch:

Bernard Grimshaw

Email: [bernard\\_grimshaw@hotmail.com](mailto:bernard_grimshaw@hotmail.com)

Phone: 07860 117680

## Circle Dancing



Dancing in a circle is an ancient tradition common to many cultures for strengthening community and encouraging togetherness.

Modern circle dance draws on the diverse traditional dances of many countries. There is also a growing repertoire of new dances to classical and contemporary music.

Circle dances can be energetic or reflective. The aim is to experience the joy of dancing with others and to create a sense of well-being through enjoyable gentle exercise!

Each dance is taught, and everyone is welcome.

We meet in the village hall on the 2nd and 4th Wednesday of the month, from 2.30-3.30. A small and friendly group – so do come and try it out – no need to commit to a term. £6/session. So come on your own or with a friend (you do not need a partner) and give it a try!

Jen Larner 07896 495574 [jenlarner@gmail.com](mailto:jenlarner@gmail.com)  
fb: west suffolk circle dance [www.jenlarner.com](http://www.jenlarner.com)

## Great Barton WI

Since the last publication, inevitably and unsurprisingly, Great Barton WI has been very active - with one exception – sadly our January meeting was cancelled due to the inclement weather conditions. Naturally the committee's decision prioritised the safety of our members.

Meanwhile our readers may like to know that our members thoroughly enjoyed our seasonal festivities in December comprising of an excellent buffet style meal created by 'Casper's Catering and Cakes', followed by entertainment from 'The Accidentals'



Our ladies created decorations for Great Barton's Church tree display - 'Christmas around the World' It all seems so long ago now that it's spring!

Our February meeting – Ben Ryan spoke to us about the very interesting work of the '**Doxa Project**'. It is a charity, set up 12 years ago, to help educate the poorest children in the urban slums of Kenya. During February the W, I as a national organisation, was asked to make **poppies** for the 'Standing with Giants' appeal. Our group contributed by knitting or crocheting poppies – red and black wool has never been so popular!

The idea for the March programme evolved from a '**chair dancing**' demonstration at our 2025 area AGM held at Thurston Community College. Some of our WI members had seen Julie Stokes in action and greatly enjoyed the chair exercises producing – so much laughter! Julie, is the CEO of the award-winning charity 'ActivLives' which mainly focuses on people aged over 55. The charity's aim is to keep people active and connected through exercise, including chair-based exercises, sports, singing and gardening. [www.activlives.org.uk](http://www.activlives.org.uk)

Looking towards our April speaker's topic - '**Tales from The Bench**' will, without doubt, be a fascinating insight into the history of crime and punishment in Bury St Edmunds from Saxon times to today! This will be an 'Open meeting' which means that we welcome local residents to join us (both ladies and gentlemen!). We ask £4 for entrance which includes the speaker's presentation, tea, coffee, cakes and biscuits; also an opportunity to chat with our members.

Our May meeting is our mandatory AGM. Additionally, this year we shall have the pleasure of a short presentation explaining and answering questions about the forthcoming changes to our system of 'Recycling' – bins, collections and more!

Great Barton WI launches its new lively and varied programme for 2026 – 2027 in June. Here is a taster of the forthcoming programme:

The June speaker will be Peter McGowran MVO, retired **Chief Yeoman Warder, HM Tower of London**. This is also an 'Open meeting' so we extend the same invitation to local residents as in April.

Other regular Great Barton WI events:

Our **Rambler** group meets on the second Tuesday of each month with recent walks based in Brandon, Nowton Park to admire the daffodils and National Trust Ickworth. 'Talk as we walk!' Each walk features coffee and cake somewhere!

Our **Lunch or Coffee** get-togethers are monthly social events too!

**Other events:** we're at the planning stage for a '**Village Spring Coffee Morning with Cake!**' Further details will be publicised asap! Our programme is available on FB and Instagram and in advance of each month's meeting our poster appears on the Parish Council noticeboards. We meet in the village hall on the first Thursday of each month at 7.30pm (except August). Our members are a very welcoming group of ladies. We thrive on friendship, fun and learning.

Do come and say 'hello' to us and feel free to bring a friend. There's no cost involved for your first two visits to a 'members only' meeting. '**Don't be shy give us a try**'

We look forward to seeing you.

Margaret Broster Co-president For further information contact us .... [secretarygbwi@gmail.com](mailto:secretarygbwi@gmail.com)

## Memories

### A SCOT IN A FOREIGN LAND by Janice Campbell

The Scots have long been known as a warrior race, from the days of the Highland Clearances to the Clan Feuds and two World Wars.

Probably because they were fighting in overseas countries they tended to set up communities throughout the world. In addition the Scots were deeply involved in shipbuilding and seafaring and were bitten by the desire to travel and explore foreign lands.

Like many of my ancestors I too became nomadic when my husband's work took us away from our homeland.

Sadly not some exotic shore, just across the border into England.

Now I can hear some of you say England is not a foreign land, of course this is very true but to someone who had lived for 25 years in Scotland things seemed very foreign!

**House Buying** - three months in England - one month in Scotland.

**Public Transport** - in the North of England bus stops fascinated me, I had never encountered Request Stops. I had been accustomed to buses stopping at ALL stops if someone was waiting, but if it was a Request Stop you had to hold your hand out for the bus to stop.

**Messages** - the reason for taking the bus was to get my messages. This caused consternation among my neighbours since they couldn't understand why had to collect so many messages from a supermarket, baker, butcher etc. Messages to me meant shopping to you.

**Shopping** - presented its own difficulties. My accent caused mystification in the supermarket when asking for pepper I was directed to the newsagents for a paper. Butcher meat caused a different problem, not so much my accent but terminology. Asking for a hough flank of mutton drew blank looks. A quick sketch and much use of hands soon established I wanted a breast of lamb and a shin of beef. (*Hough definition beef shin or leg meat, a flavourful, economical, and highly gelatinous cut.*)

While explaining all this my two toddlers were getting impatient and started ginning, in English winging so it was quite a relief when a neighbour asked me in for coffee. Knowing that in Scotland this was normally accompanied by a selection of home made scones, pancakes etc. I looked forward to some delicacy, but soon realised coffee was just that!

Another thing I found disconcerting was the need to wait for an invitation to visit folk. In Scotland there is a much freer attitude, it really is a matter of dropping in no matter the state of the house or children you were always made welcome.

We British are, of course obsessed with weather and in this respect Scotland and England are similar. I have had my fair share of sunshine, gales fog, ice and snow.

The difficulties I initially encountered have taught me a great deal and I am grateful to the many friends who have helped me weather the storms.

I hope in the giving of their friendship not only have I gained but they have gained from me - a Scot in the adopted but foreign land of England.

I have now lived here for over sixty years so I consider I am now slightly Anglified or dare I say Suffolk-ated!

*I play scrabble with this lady and you can bet she will always find a Scottish word that no one else has ever heard of!*  
- Cllr Elaine Read

## Royal British Legion Poppy Appeal 2025

This year over £1500 was collected in the Great Barton area in the 2 weeks leading up to Remembrance Day. I would like to express my thanks to all those who donated to this worthy cause.

The total at this time is again higher than last year which is due to the high level of support from the schools, churches, businesses and individual donors.

New collectors are always needed so if you would like to help out next year please do contact me.

The money raised will allow the British Legion to continue to provide lifelong support to serving and ex-serving personnel and their families. None of this would be possible without your amazing help and support. On behalf of the Armed Forces Community, thank you.

*Bill Charnaud*

Poppy Appeal Honorary Organiser.



## Community News, Events & Clubs

### BOWLS CLUB

If you have just moved to the area, recently retired or would like to make new friends, joining Great Barton Bowls Club is an excellent way to meet people in a relaxed atmosphere.

Whilst we are primarily devoted to the enjoyable game of bowls, we are also a social club and offer social memberships to non-playing members.

We are a friendly club with an excellent green, clubhouse, and bar. Whether you are new to the game or have played before we think you will enjoy our club.

If you have not played before we offer a free taster session where bowls will be provided. You will only need flat shoes to play on the green. Thereafter, if you decide to join, coaching will be available to help you on your way to participate in this enjoyable game.



#### **We offer the following facilities: -**

Tuesday coffee mornings and friendly games and practice sessions in the summer season.

Participation in various leagues for the more experienced players.

Friday evening practice sessions when the bar will also be open for a social get together.

Various Friday evening fun social events in the winter season (September to mid-April) including bingo, race night, crib, quizzes etc.



**If you are interested or would like further information please contact: -**

Club Secretary: Richard Weller 07488349229

Website: [greatbartonbowlsclub.webnode.com](http://greatbartonbowlsclub.webnode.com)

Or come and see us on Tuesday mornings from 10am.

### VILLAGE HALL FILM NIGHTS

Film Nights continue at the Village Hall at  
**7:30pm on the third Saturday of each month.**

Upcoming film titles will be announced as soon as they're confirmed.

## Community News, Events & Clubs



### Squirrels

In January it was our great pleasure to open our brand-new Squirrel section. The 4- and 5-year-olds have enjoyed taking part in stories, games, crafts, and songs. We look forward to taking them outdoors once the weather improves!

The new group has proven so popular that we already have a waiting list. We would love to offer some of the Squirrels on the waiting list a place, so if you are able to help on a Tuesday afternoon from 4.15 to 5.15, please do get in touch.

### Beavers

We currently have spaces in the Beaver section for 6- and 7-year-olds, so visit our website if you'd like your child to join the adventure.

### World Jamboree

In 1920, the first World Scout Jamboree took place in London, with Scouts from all over the world taking part. The World Jamboree has since been held every four years in countries around the globe. The next Jamboree takes place in 2027 in Poland, where over 40,000 Scouts from 176 countries will attend.

Only a handful of Scouts from each county are selected to take part. Last autumn, several of our Scouts entered the Suffolk selection process, and we were incredibly proud when one of our Young Leaders, Lenny, and one of our Scouts, Izzy, were chosen to embark on the adventure of a lifetime. A huge congratulations to them both.

They now have to work hard to fundraise for the trip, so if you know of any local businesses who may be able to help with donations, please get in touch.

If your child would like to join us, or if you'd like to get involved as a volunteer, we'd love to hear from you.

*Jonathan Corwin.*  
Lead Volunteer, Great Barton Scout Group.

**A big thank you to everyone who donated their Tesco tokens towards Great Barton Scouts during the autumn. At the time of writing, we are still waiting to hear the final result, but Tesco will donate at least £500. Further thanks go to Asda, who have donated £600 towards camp kitchen equipment, and to British Sugar, who are supporting our young people attending the World Jamboree with a gift of £250.**



Discover adventure, spark creativity, grow teamwork and gain skills for life at Great Barton Beavers.

- ✓ Wednesdays 5-6.15pm
- ✓ For Ages 6-8
- ✓ Both Boys & Girls
- ✓ Our HQ is opposite Great Barton Village Hall

#### Join Us



#### Contact Us

[glv@gtbartonscouts.co.uk](mailto:glv@gtbartonscouts.co.uk)  
[www.gtbartonscouts.co.uk](http://www.gtbartonscouts.co.uk)

Great Barton Scout HQ  
Elms Close, Great Barton, Suffolk, IP31 2NR



**Adventure. Friendship.  
Skills for Life.**



**Squirrels**  
Ages 4-6  
Meets on Tuesdays  
4.15pm-5.15pm

**BEAVERS**  
Ages 6-8  
Meets on Wednesdays  
5pm-6.15pm

**cubs**  
Ages 8-10½  
Meets on Mondays  
6.30pm-8pm

**SCOUTS**  
Ages 10½-14  
Meets on Thursdays  
7pm-8.45pm

#### Who we are

Great Barton Scout Group has been building skills, confidence and friendship in young people for over fifty years. We offer fun indoor and outdoor activities and welcome new members and volunteers to join the adventure. All are welcome, regardless of gender, ability or background. All adult team members are DBS checked and trained in safeguarding and safety.

#### Find Us

Great Barton Scout HQ  
Opposite the Village Hall  
Elms Close, Great Barton,  
Suffolk, IP31 2NR

#### Contact Us

[glv@gtbartonscouts.co.uk](mailto:glv@gtbartonscouts.co.uk)  
07764 815763  
[www.gtbartonscouts.co.uk](http://www.gtbartonscouts.co.uk)

Great Barton Scout Group  
Charity Number 271284

#### Join Us



**Our Scout Hut is available for hire, as well as a 7.6x4.5m marquee and other shelters.**

For all enquiries, email Jonathan at [glv@gtbartonscouts.co.uk](mailto:glv@gtbartonscouts.co.uk), or phone 07764 815763



# FREEDOMCHURCH

Mill Road, Great Barton, IP31 2RU. [www.freedomchurch.org.uk](http://www.freedomchurch.org.uk)

## CHURCH GATHERINGS

All are welcome EVERY Sunday

10.30am  
@ FREEDOM CHURCH

### Freedom Kids

Freedom Family ministry gathers on the 2<sup>nd</sup> & 4<sup>th</sup> Sundays

## OUR VISION

COMMUNITY  
PRESENCE  
RESOURCE

Heart of the **community**  
A place where **God** dwells  
A **resource** centre for all

## HIRE OUR BUILDING

Spaces are available to hire through out the week. For more information please email: [hello@freedomchurch.org.uk](mailto:hello@freedomchurch.org.uk)

If you have any questions, would like to find out more about Freedom Church, check what's happening or discover about volunteering opportunities please get in touch by emailing:  
[hello@freedomchurch.org.uk](mailto:hello@freedomchurch.org.uk)

## Freedom Tots

EVERY WEDNESDAY  
10.00AM- 12.00PM

SOFT PLAY, CRAFT,  
STORY TELLING &  
MORE...

£3.50 PER  
CHILD



## SEND CAFE



COME AND JOIN US AT  
FREEDOM CAFE  
EVERY THURSDAY  
10:30AM TO 12.00PM  
FOR FUN, GAMES  
& ACTIVITIES

to find out more email:  
[community@freedomchurch.org.uk](mailto:community@freedomchurch.org.uk)

## HONEYPOT CAFE

Every Friday  
10:30- 12:00pm

A cafe for over 65s  
providing activities, to build  
friendship and bring joy



Christians Against Poverty  
Debt Centre

Please contact debt centre  
manager Sally Murray for  
more information by  
emailing:  
[sallymurray@capuk.org](mailto:sallymurray@capuk.org)

## FREEDOM WORSHIP

Holy Spirit led worship  
night held by the  
Freedom Worship  
Collective

Every 1st Thursday

7.30PM at  
Freedom Church



# Freedom Community Cafe

## THE HEART OF THE COMMUNITY

### TUESDAY TO FRIDAY

### 10:00AM - 3PM

## [WWW.FREEDOMCHURCH.ORG.UK/FREEDOM-CAFE](http://WWW.FREEDOMCHURCH.ORG.UK/FREEDOM-CAFE)

Great coffee, snacks and light lunches in a warm, welcoming space. Family Lounge available for you to enjoy a relaxed coffee while your little ones play. Why not pop in and give us a try.

**Fresh handmade lunch is served from 11.30am to 2pm.**

Throughout the week we have all sorts of community activities going on including Honey Pot Dementia Cafe, Breastfeeding Support, Tots Soft Play Cafe, SEND cafe and so much more!

Keep an eye out on our Facebook page for regular updates.

[www.facebook.com/freedomcafegb](http://www.facebook.com/freedomcafegb)



**FREEDOMCHURCH**

Mill Road, Great Barton, IP31 2RU. [www.freedomchurch.org.uk](http://www.freedomchurch.org.uk)

## Message from Revd Benjamin Edwards

There's a specific vertigo when the landscape we thought was permanent begins to blur. We feel it in morning headlines and evening silences—a sense that the structures of our common life, from the climate to the economy, are no longer as solid as we once believed. When the floorboards of society creak, the natural human response is to tighten our grip and retreat.

But the Christian faith doesn't invite us to hide. It invites us to find a different kind of stability—one that doesn't depend on the world standing still.

When Jesus told his friends not to be consumed by anxiety, it wasn't a superficial distraction. Jesus was standing in an occupied land, speaking to people whose lives were dictated by the whims of an empire. That message was foundational: it pointed away from the shifting power of Rome and toward the quiet, persistent heartbeat of God's creation.

To follow that path today is to seek a rooted faith. This isn't a coat of paint on the surface of our lives; it digs into the soil of our actual reality. Being rooted doesn't mean being stuck; it means having a source of life deeper than the drought. Even when the foundations of modern society are rocked, we remain connected to a truth that is ancient, sturdy, and reliable.

If our faith is rooted in God's love, it naturally becomes expansive. The more we trust that God is holding us, the less we need to live braced for impact. God is not a distant architect who has left us to manage the ruins; God is the one walking the dusty roads alongside us. This is a faith of open arms—a way of being Christian that looks outward with curiosity rather than inward with fear. It allows us to be forward-leaning, not because we know exactly what the future holds, but because we know who holds the future.

Hope is often misunderstood as just putting a brave face on things, but in the Christian tradition, it is much grittier. Hope is an anchor. Its purpose isn't to keep the boat from rocking, but to keep it from drifting while the storm does its work. Our anchor is the conviction that love is the ultimate reality and that the thread of God's grace remains unbroken.

As we navigate this global shift, we don't have to have all the answers. We simply stay present to the God who is already here, tending the ground with us. That is why we gather at St Peter's and Holy Innocents: not to escape the world, but to listen more closely for what God is saying right in the middle of it. We invite the curious, the sceptical, and the weary to join us in exploring how this ancient message can steady us today. We are called to be a people who find their steadiness not in the absence of change, but in the presence of the One who says, "I am with you always."

The world is changing, yes. But the light still shines, and the darkness—no matter how loud it gets—has never quite figured out how to put it out.

Peace and steadfastness, *Fr Ben*

## Church Information

### Church Institute

The Church Institute is a lovely venue, available for private and regular club bookings. It is also available for parties, celebrations, wedding receptions, funeral wakes and other general use.

For prices and enquiries please contact:  
Linda Scoles 01359 230392 or Reverend Ben Edwards at [revdbenjaminedwards@gmail.com](mailto:revdbenjaminedwards@gmail.com)

### Benedictine Sisters of Our Lady of Grace & Compassion

Montana , East Barton Rd, Great Barton has a Roman Catholic mass on a **Sunday at 10.30am** and weekdays **Monday to Friday at 8.15am**

### Holy Innocents Church

#### Church Officers

#### Ways to contact us

**Vicar: Reverend Ben Edwards**

**Email: [revdbenjaminedwards@gmail.com](mailto:revdbenjaminedwards@gmail.com)**

**Churchwardens: Tim Frost 01284 787442**

**Angela Pearce 01359 230395**

**Verger: Linda Scoles 01359 230392**

**Pcc Secretary: Jane Dalton 01284 788613**

**Treasurer Kathy Drakes 01284 787746**

[www.greatbartonandthurston.org.uk](http://www.greatbartonandthurston.org.uk)

**Our on-line magazine can be found on our website:**

<http://themessengergtbarton.suffolk.cloud>

**The Church Facebook pages:**

Holy Innocents: <https://www.facebook.com/Holy-Innocents-Church-Great-Barton685807921585678/>

St Peter's: <https://www.facebook.com/St-Peters-Church-Thurston-1790473917903849/>

# Great Barton and Thurston Benefice Services

## APRIL 2026

<b>Wednesday 1st April:</b>	Holy Communion (CW) Montana at 11.15am
<b>Thursday 2nd April (Maundy Thursday):</b>	Benefice Communion at St Peter's at 6.30pm
<b>Friday 3rd April (Good Friday):</b>	Benefice Holy Communion (BCP) at St Peter's at 8.30am Benefice Communion service of Liturgy at Holy Innocents at 10.30am
<b>Sunday 5th April: Easter Sunday:</b>	All Age Easter Communion at St Peter's at 10.30am Easter Communion at Holy Innocents at 10.30am Choral Evensong at St Peter's at 6.30pm
<b>Wednesday 8th April:</b>	No Service
<b>Sunday 12th April:</b>	Benefice Holy Communion at St Peter's at 10.30am Choral Evensong at Holy Innocents at 6.30pm
<b>Wednesday 15th April:</b>	No Service (Ben on post Easter Break)
<b>Sunday 19th April</b>	Benefice Holy Communion at Holy Innocents at 10.30am
<b>Wednesday 22nd April:</b>	Holy Communion (CW) at Holy Innocents at 10.30am
<b>Sunday 26th April:</b>	Benefice All Age Communion at St Peter's at 10.30am
<b>Wednesday 29th April:</b>	Holy Communion (CW) at St Peter's at 10.30am

## MAY 2026

<b>Sunday 3rd May:</b>	Benefice Sung Eucharist at Holy Innocents at 10.30am Choral Evensong at St Peter's at 6.30pm
<b>Wednesday 6th May:</b>	Holy Communion (CW) at Montana at 11.15am
<b>Sunday 10th May:</b>	Benefice Sung Eucharist at St Peter's at 10.30am Choral Evensong at Holy Innocents at 6.30pm
<b>Wednesday 13th May:</b>	Holy Communion (CW) at Holy Innocents at 10.30am
<b>Sunday 17th May: Including Ascension Day</b>	Benefice Holy Communion (BCP) at St Peter's at 8.30am Benefice Communion (CW) at Holy Innocents at 10.30am
<b>Wednesday 20th May:</b>	Holy Communion (CW) at St Peter's at 10.30am
<b>Sunday 24th May: (Pentecost)</b>	Benefice All Age Communion at St Peter's at 10.30am
<b>Wednesday 27th May:</b>	Holy Communion (CW) at Holy Innocents at 10.30am
<b>Sunday 31st May: (Trinity Sunday)</b>	Benefice All Age Communion (CW) Holy Innocents at 10.30am

## JUNE 2026

<b>Wednesday 3rd June:</b>	Holy Communion (CW) at Montana at 11.15am
<b>Sunday 7th June:</b>	Benefice Sung Eucharist at Holy Innocents at 10.30am Choral Evensong at St Peter's at 6.30pm
<b>Wednesday 10th June:</b>	Holy Communion (CW) at St Peter's at 10.30am
<b>Sunday 14th June:</b>	All Age Communion at St Peter's at 10.30am Choral Evensong at Holy Innocents at 6.30pm
<b>Wednesday 17th June:</b>	Holy Communion (CW) Holy Innocents at 10.30am
<b>Sunday 21st June:</b>	Benefice Holy Communion (BCP) at St Peter's at 8.30am Benefice All Age Communion at Holy Innocents at 10.30am
<b>Wednesday 24th June:</b>	Holy Communion (CW) St Peter's at 10.30am
<b>Sunday 28th June:</b>	Benefice All Age Communion (CW) at St Peter's at 10.30am

*(CW Common Worship, BCP Book of Common Prayer)*

## Village Directory of Clubs and Societies

<b>Badminton Club</b> Ann Tee	01284 788161	<b>Great Barton Village Hall Bookings</b> Diana Bilverstone Diana.74@hotmail.co.uk www.greatbartonvh.onesuffolk.net	01359 352357
<b>Bowls Club (Outdoor)</b> Richard Weller Richardweller1956@gmail.com www.greatbartonbowlsclub.webnode.com	01284 787707	<b>Great Barton Primary Academy</b> Claire Ratley	01284 787353
<b>Benedictine Sisters of Our Lady of Grace &amp; Compassion</b> montana.gtbarton@btconnect.com www.montanacarehome.com	01284 787321	<b>History Society</b> Jane Bream j.bream711@btinternet.com	01284 702336
<b>Church Institute Bookings</b> Linda Scoles Lindascoles@uwclub.net	01359 230392	<b>Holy Innocents Church</b> Revd Ben Edwards revdbenjaminedwards@gmail.com admichurch64@gmail.com	07522 396397
<b>Circle Dancing</b> jenlerner@gmail.com Fb: West Suffolk Circle dance	07896 495574	<b>Mothers Union</b> Linda Scoles Gill Flower	01359 230392 01359 231718
<b>Freedom Church</b> Leaders Mike and Lizi Long hello@freedomchurch.org.uk www.freedomchurch.org.uk	01284 788032	<b>Pathways Pre-School</b> Julie Goodwin www.greatbartonpathways.co.uk	01284 788258
<b>Great Barton Allotment Association</b> gballotments@gmail.com www.gballotments.org		<b>Scout Group</b> Jonathan Corwin gsl@gtbartonscouts.co.uk www.gtbartonscouts.co.uk	07764 815763
<b>Great Barton Community Woodland</b> Martin Jackson	07970 118658	<b>Second Chance Stroke Club</b> Peter Marsh Peter.marsh@stroke.org.uk www.secondchancestrokeclub.co.uk	07884 125757
<b>Great Barton Computer Club</b> Secretary.gbcc@outlook.com www.gbcc.onesuffolk.net		<b>Women's Institute</b> greatbartonwi@gmail.com www.thewi.org.uk	01284 788431
<b>Great Barton Luncheon Club</b> Cindy Morgan cynthiamorgan249@btinternet.com	01284 788487	<b>West Suffolk Dog Training Society</b> Sarah Connell	01284 767050
<b>Great Barton Thanksgiving Fund</b> (Village Hall Management Committee) Peter Fisk	01359 231382	<b>West Suffolk Fine Wine Society</b> Wynn Rees	07580 132568



**ELITE FENCING & LANDSCAPING**

All types of fencing erected.  
Patos, Bases, Turfing, Decking.  
Paths, Hard surface pressure washing.  
All outdoor work undertaken.

Home 01359 221128, Mobile 07761 651567  
Trevor@elite-fencing.co.uk  
www.elite-fencing.co.uk

## Marvellous You

Colour Analysis, Wardrobe Styling  
and Personal Shopping

marvellous you.uk

sabinasandy@hotmail.co.uk

## Circle Dancing

Gentle (mostly!) dances to world music.

Every Wednesday at the village hall

2.30-3.30. £6/session

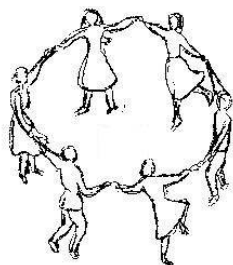
No partner needed.

Contact [www.jenlerner.com](http://www.jenlerner.com)

[jenlerner@gmail.com](mailto:jenlerner@gmail.com)

07896 495574

Fb: West Suffolk Circle dance



## BURROUGHS ELECTRICAL

Mob: 07921 235 603

Email:

[luke@burroughselectrical.co.uk](mailto:luke@burroughselectrical.co.uk)



@Burroughselectrical



Instagram

burroughs\_electrical

<http://Burroughselectrical.co.uk>

Call Now for a Free Estimate!



## Ear We Go

Mobile Ear Wax removal  
Microsuction & Irrigation

My name is Georgie  
Please call or text me on  
07921550958  
or email  
[earwego12@gmail.com](mailto:earwego12@gmail.com)

Fully Insured & DBS

## YogaWell

WELL BODY, WELL MIND

## Yoga For Everyone!

*Mondays*  
7-8pm

*Great Barton*  
*Village Hall*

*£8 per*  
*session*



BOOK ONLINE @ [Yogawellsuffolk.co.uk](http://Yogawellsuffolk.co.uk)

## **HOME AND PROPERTY IMPROVEMENT**

All types of interior and exterior work undertaken by a qualified, experienced local tradesman.

Carpentry; wall and floor tiling; renovation work; painting & decorating inside and out; built in wardrobes; shed re-roofing; fencing; gates; patios; small brickwork and re-pointing to name but a few.....

Have all those jobs you've been wanting to have done for ages, carried out under one roof!!

For a free quote and advice call or email:

**John Ranson**

**01284 788248    07770932799**

[j.w.ransonbuilding@gmail.com](mailto:j.w.ransonbuilding@gmail.com)

For a personal and trustworthy service, fully insured, and guaranteed quality work.

Over 20 years' experience, C & G qualified. Portfolio of photos available on request and references available.



# LIVEN

## LANDSCAPES

07720 224112  
matthew@livenlandscapes.co.uk



Bury St Edmunds Based Landscaping

Design and Installation Specialists

- Patios and Paving
- Ponds and Waterscapes
- Brickwork and Sleeper Walls
- Fencing and Soft Landscaping

Plus much more!

LIVEN UP YOUR OUTDOOR SPACE!

## **GADD BROTHERS**

TREES AND LANDSCAPES

### TREE WORK & ARBORICULTURAL SERVICES

Qualified and insured professionals undertaking all aspects of tree work, from dismantling mature dangerous trees to pruning and planting.



## **WOOD FARM**

### KILN DRIED FIREWOOD

Locally sourced hardwood timber from sites with felling licences to ensure sustainability. All logs are Kiln dried on site, 'Ready to Burn' certified with a moisture content of below 20%, to ensure clean and efficient burning.

01284 788794 • [info@gaddbrothers.co.uk](mailto:info@gaddbrothers.co.uk) • [gaddbrothers.co.uk](http://gaddbrothers.co.uk)

Wood Farm, Brand Road, Great Barton IP31 2NY

# Hathaway & Co.

## Tailored Men's Grooming Studio

Hathaway & Co is a professional male grooming studio based in Timworth.

We offer a tailored experience designed to meet all your grooming needs, including cutting, shaving, waxing, colouring, perming and much more.

While at our studio, grab a coffee, chill out, while we take care of the rest.

Over 65's receives 20% off on Thursdays!

Find us at:

Unit 34-35 Barns and Stables, Timworth,  
Bury St Edmunds, IP31 1HS

Free Parking Available



20% off  
your first  
visit

01284 615083

Book online at [hathawayco.co.uk](http://hathawayco.co.uk)



## Leon Brown Arb-Agri Contracting LTD Tree Surgery Services

Dead Wooding & Crown Lifting

Chipping

Woodland Management

Crown Reductions

Hedge Cutting

Felling & Dismantling

Site Clearance Works

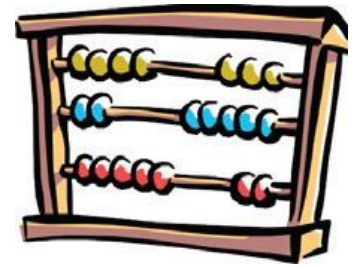
Vegetation management

General Ground Maintenance

Tel: 01284 599914 Mobile: 07552393830  
[Leonbrown.28@hotmail.co.uk](mailto:Leonbrown.28@hotmail.co.uk)

# TWINN ACCOUNTANTS LTD

We offer an efficient and professional accountancy service at a very competitive rate.



- ✓ Accounts and tax returns for Sole Traders, Partnerships and Limited Companies.
- ✓ Self-Assessment including MTD ITSA
- ✓ VAT returns
- ✓ Payroll Services
- ✓ Construction Industry Scheme
- ✓ Bookkeeping and Management Accounts
- ✓ Tax Planning
- ✓ Company Secretarial Services
- ✓ Training on Xero and QuickBooks

Tel: **01284 787616**

Email: [info@twinnaccountants.co.uk](mailto:info@twinnaccountants.co.uk)

[www.twinnaccountants.com](http://www.twinnaccountants.com)

**Suite 4, East Barton Barns, Great Barton, IP31 2QY**

All accountants are not the same...we promise!



**JJB Garden & Maintenance**

- ✓ Garden maintenance
- ✓ Clearance
- ✓ Gutter clearance
- ✓ Odd jobs
- ✓ Grass cuts, incl. ride on for larger spaces
- ✓ Hedge trimming

A friendly, reliable service aiming to suit your needs, however small!

Contact Jazz

Phone - 07403 062652

Email - [jjbgardensuffolk@gmail.com](mailto:jjbgardensuffolk@gmail.com)

Find me on Facebook - JJB Garden & Maintenance

## GREAT BARTON LAWN SCARIFYING SERVICE

Please call Jeremy for a no obligation free quote.

07834602929

[jeremycooksley@gmail.com](mailto:jeremycooksley@gmail.com)

## West Suffolk Chimney Services

Your local sweep  
*All types of chimneys swept*

Open fires

Member of the Guild of Master Chimney Sweeps

Woodburners

Traditional and Power sweeping

Multi-fuel stoves

Fully insured

Boiler flues

Insurance-recognised certificates with every job

Agas and ranges

Cowls and birdguards supplied and fitted

Inglenooks (additional charge)

CCTV camera inspection available

**£65 for a standard sweep**

Contact Ian Rice

01284 787238 or 07841 390292

# RH

Small garden machinery service and repairs

- Strimmers
- Lawnmowers
- Chainsaws
- Hedge Cutters
- Leaf blowers
- and more



Can collect and deliver locally around the Bury St Edmunds area.



For more information call  
**07823 884890**

# Happy Pilates

Mixed ability Pilates classes  
At Hazelwood Dance Studios

**Monday 6/7pm**

Tuesday 9.30-10.30 am

Thursday 9.30-10.30 am

Sabina tel 07503753121  
sabinasandy@hotmail.co.uk  
happypilates.co.uk

# FootWise

Foot Health Care

Every **MONDAY & WEDNESDAY**

at The School Room Clinic

Methodist Chapel, High Street, Ixworth

**TREATMENTS INCLUDE**

Nail Trimming | Thick Nail Reduction | Ingrown Nails  
Hard Skin Removal | Cracked Heels | Corn Removal  
Diabetic Foot Care | Nail Reconstruction

**BOOK YOUR CLINIC APPOINTMENT OR HOME VISIT**

Call Camellia Dighe Dip MFHP, Dip DM

Foot Health Practitioner

Mob: 07799664684

E-Mail: FootWise@Protonmail.com



# DAVID MARTIN MOTOR VEHICLE ENGINEER

Thedwaste Place, Station Hill, Thurston, Bury St. Edmunds, Suffolk, IP31 3QU



01359 230536



07808 508864



info@davidmartinmotorengineer.co.uk

www.davidmatinmotorengineer.co.uk

Open Monday - Friday 8am - 5pm



Local, honest, friendly, reliable family run business (with over 150 years experience) offering car and light commercial vehicle repairs at competitive prices



R134a and R1234yf

**Air Con. re-gas while you wait**  
(subject to availability)

**Air Con. repairs**



## SERVICING ON ALL MAKES AND MODELS

\*\*including vehicles still under main dealer warranty

Cam belts  
Bodywork  
Welding  
Brake overhauls

Tyres supplied  
& fitted at competitive prices

Exhausts  
Batteries  
4 Wheel alignment



**Courtesy car** (subject to availability)



## MOTs

Class 4, 5 (minibus) & 7  
(up to 3,500kg)  
**Including free retest**  
within 10 working days



Check out our Google review and feedback @ [www.goodgaragescheme.com](http://www.goodgaragescheme.com)

**NO WORK IS CARRIED OUT WITHOUT FULL CONSENT FROM THE CUSTOMER**



# QUOVE ACCOUNTING

## Flexible Accounting.

For Business and Personal accounting solutions.



**Quality.**  
**Unique.**  
**Objective.**  
**Visionary.**  
**Experts.**

### Contact us.

hello@quove.co.uk  
01284 845120  
quove.co.uk

3 Brickfields  
Business Park,  
Woolpit, IP30 9QS

Big enough to cope,  
small enough to care.

# Suffolk Pressure Washing

Slippery Path / Decking?  
Dirty Driveway / Patio?

### Specialists in cleaning:

- Patios
- Paths
- Driveways
- Walls
- Fences
- Decking

*Call Jeremy for a free,  
no obligation quote*

**07834 602929**

**jeremycooksley@gmail.com**



## JK MAYES

PLUMBING AND HEATING LTD



- For all of your Plumbing & Heating requirements
- Oil, Gas & LPG boiler servicing, maintenance and replacements
- Vented & Unvented hot water cylinders
- Full bathroom renovation, from design to completion
- Air source heat pumps fitted (BUS grant available)
- All small maintenance jobs undertaken
- New Builds
- Excellent contacts to other trades
- Fully Insured
- Based in Great Barton

**01284 787682 07825 325584**

**j.mayes23@btinternet.com**

# Anglim Health

## Private GP Surgery in Bury St Edmunds



Anglim Health are a fully equipped modern surgery with parking, conveniently located in Fornham All Saints.

At the heart of Anglim Health is Dr Anglim. He is passionate about providing a personalised and dedicated service to his patients.

Anglim Health offers regular or one-off appointments, there is no need to register first. Most importantly, appointments are face to face with a GP at a time that is convenient to you.

Anglim Health works alongside your NHS GP to ensure that you have the best healthcare options available to you.



### Urgent and Flexible Appointments

Appointments available quickly, including early, late and weekends.



### A Personal Relationship

A personal, private GP takes time to fully understand your circumstances.



### High Quality Care

We provide the highest quality care and can offer treatments and tests not routinely provided by the NHS.

01284 245665

[www.anglimhealth.co.uk](http://www.anglimhealth.co.uk)



# Whole of Market Mortgage Specialists

*Right on your Doorstep...*

Mortgages | Specialist Lending | Protection | Later Life Lending

**01284 729250**

**[www.larkbridge.co.uk](http://www.larkbridge.co.uk)**



**Call now for a free  
consultation - no obligation**

