

Great Barton Newsletter



Autumn 2025

Photography by Bob Butler

Parish Council – Useful Information

Parish Council meeting dates for 2026

Planning	Full council
12th Jan	19th Jan
9th Feb	16th Feb
9th Mar	16th Mar
13th April	20th April (AGM)
11th May	18th May
8th June	15th Jun
13th July	20th July
10th August If Req	17th Aug
14th Sept	21st Sept
12th Oct	19th Oct
9th Nov	16th Nov
7th Dec	14th Dec

All members of the public are welcome at the meetings.

For more information:

Telephone the Parish Clerk Jessica Langley on 07596 868600

Parish Council Contact Details:

Chair Maggie Dunn - chair@greatbarton-pc.gov.uk
 Cllr Andy Baker - andybaker@greatbarton-pc.gov.uk
 Cllr Gwyn James - gwynjames@greatbarton-pc.gov.uk
 Cllr Peter Fisk - clerk@greatbarton-pc.gov.uk
 Cllr Jenny Stone - jennystone@greatbarton-pc.gov.uk
 Vice Chair Elaine Read - elaineread@greatbarton-pc.gov.uk
 Parish Clerk Jessica Langley - clerk@greatbarton-pc.gov.uk

District and County Councillors Contact Details:

West Suffolk Council – Cllr Sarah Broughton

01284 787327 / 07929 305787
 sarah.broughton@westsuffolk.gov.uk

West Suffolk Council – Cllr Rebecca Hopfensperger

07545 423826 / 07876 683516
 rebecca.hopfensperger@suffolk.gov.uk

Suffolk County Council – Cllr Rebecca Hopfensperger

07545 423826 / 07876 683516
 rebecca.hopfensperger@suffolk.gov.uk

Contact details for our Village Emergency Team

John Roe	07845 529923	01284 787749
David Murray	07825 172446	01284 788606
Clare Hopwood	07787 516401	
Josh Pirt	07961 863866	01359 231011
Simon Stockdale	07572 037615	N/a
Eddie Gibson	07484 602289	01284 788384
Nicola Crouch	07739 852714	01284 788611
Maggie Dunn	07977 875882	01284 787357

Newsletter Information

Distribution

Tracey Butt 01284 787386

Contact Tracey if you are willing to help distribute the newsletter

Minutes of Parish Council meetings are available here:

<https://greatbarton-pc.gov.uk/parish-council/minutes/>

Deadline for submissions for the Spring Edition is

2nd Feb 2026

Published by Great Barton Parish Council

Photography Copyright GBPC

Front cover photo submitted by Bob Butler

Thanks to everyone who provided photos for this edition.

Website: <http://greatbarton-pc.gov.uk/>

Parish Council

Hello folks this year has gone very quickly and we are already at our winter newsletter and soon be in the run up to Christmas

I hope you have had a good summer, if you garden and grow fruit and vegetables then it has been a bumper year. We had so many apples on one of our apple trees that a large branch broke off. We have also had a very good crop of tomatoes and runner beans.

What have you Parish Council been doing and what can I update you on.

- The Triangle ...there has been no update on the planning we are keeping our eyes on it as the new Local Plan has been published and there are inconsistencies with our Neighbourhood Plan. We are taking legal advice on this so that there is no conflict. I will keep you up dated on this.
- The Severals estate by the railway bridge on the A143. They have done some minor works else their planning permission would have run out as the three years was nearing an end. There is no definitive building on the horizon yet.
- The Skirting Back along the A143. This should start anytime. We have to wait for the contractor to start as we need a traffic order. The work is being paid jointly by the Parish Council, and our councillors Sarah Broughton and Rebecca Hopfensberger out of their locality budgets so thank them for that. We then will keep them back so it makes them useable.
- The White Gates at the entrances to the village are due to be installed by the end of October. They will hopefully slow vehicles down through the village. People are still speeding through the village some of whom are residents here.
- Elms MeadowSuffolk County Council have started work on this and they have cut the footpath across from Cox Lane to Ice Pits Wood. It will not have a surface and will just be cut periodically during the year. It will wear as people walk it and it will become like usual footpaths in the country. I will update you with anything else that happens.
- Gym equipment has been installed next to the playground; it is being well used. Go and give it a try, the first piece nearest the hall is for wheelchair users. We now hope to update the playground as some of the equipment is getting near the end of its serviceable use.

Now for some really good news Great Barton were awarded The Most Active Village in Suffolk in the Suffolk Community Awards. Jenny and I went to the award ceremony. It was awarded because of the gym equipment we had installed, the new footpath, the many sports that are played at the village and the Park and Stride that sees children and parents park at the Village Hall or the Freedom Church and walk to school. It is an honour for the Village to get this ward and it makes us want to push for more walking routes around the village.

Peter Fisk also attended as he was Highly Commended in the Councillor of the Year Award. The judges were truly inspired by Peter's remarkable contribution to Great Barton, with nearly fifty years of dedicated service to the local community—an extraordinary achievement that few will ever match. A passionate gardener, Peter played a key role in securing allotments for the village and has worked tirelessly to enhance the natural beauty of the area. His efforts in planting trees for significant projects such as the Queen's Jubilee, Elms Wood, and Ice Pits Wood have left a lasting legacy. In today's climate-conscious world, Peter's deep knowledge of trees is more valuable than ever. The judges also praised Peter's adaptability and determination in the face of change. His willingness to embrace new technology—attending council meetings online during the pandemic—demonstrates his commitment to staying engaged and supporting the community, no matter the challenge. Peter's enduring dedication, resilience, and love for Great Barton make him a truly inspirational figure and a cherished part of the parish.

Maggies Moans

- Speeding through the village this is still a problem, on two occasions recently once when Speedwatch was taking place and secondly when the Police were doing a check I was flashed by oncoming vehicles as I approached them. This is not helpful and does not solve the speeding problem in the village.

SPEEDING KILLS

I have also noticed more speeding in School Road during the school day and vehicles going on to the footpath so they don't have to slow down. Vehicles have also gone through the crossing lights on the A143 when they were changing for people to cross.

- Dogs on the village hall playing fieldplease keep them on a lead see later article later.

Parish Council

Parish Update from the Clerk

As Maggie has already mentioned, it has been a busy year so far for us at the Parish Council. But we are still looking to do more. Following the new Elms Meadow footpath installation and Public Rights of Way meeting, it is clear the village is keen to have more circular walks. If you have any ideas about joining up footpaths or know a route with no current public rights of way access, reach out. We can see what we can do. We have put together a full map of Great Barton, showing all current routes you can find in the middle of the newsletter.

Our next big project is looking to update the play area at the village hall, If you have ideas get in touch! We would love some fresh ideas to get this going.

The Parish Council can only get so much done for our village because we have volunteers. We are so thankful for them. These include our Councillors, Speedwatch, Triangle Task Force, newsletter distribution teams and Emergency response team, to name a few. But we need more.

We currently have vacancies on our Parish Council and Speedwatch team. What about joining the new Village Maintenance Group? Is something looking untidy or unkept? Do you want to help the village looking its best? Get involved. Full training and equipment are provided.

You can make a difference to your community.

Jessica Langley
Parish Clerk and Responsible Financial Officer

Disclaimer Notice

Please note that Great Barton Parish Council is responsible for the maintenance of Icepits Wood; however, we have **no** association with the homemade bike track inside the area.



For your safety, we strongly advise all members of the public to **avoid the jumps**, as they are neither inspected nor certified as safe. The Parish Council accept **no liability** for any loss or injury occurring on these jumps or anywhere within Icepits Wood.

Many thanks,
Great Barton Parish Council
clerk@greatbarton-pc.gov.uk



JOINING GREAT BARTON'S VILLAGE EMAIL SERVICE!

Hello, Great Barton residents!

Want to stay up to date on things happening in our village? From progress on the Triangle planning application to road closures and exciting events, news from the Parish Council, and more – the Village Email Service is the best way to keep informed!

By subscribing, you'll receive updates straight to your inbox, so you never miss out on the latest happenings in Great Barton. It's quick, easy, and a great way to stay connected to your community.

How to Subscribe:

Visit our website homepage:
<http://greatbarton-pc.gov.uk/>

Or get in touch with our Parish Clerk at:
Email: clerk@greatbarton-pc.gov.uk

Call: 07596 868600

VILLAGE MAINTENANCE GROUP JOIN US!



**CONTACT THE CLERK
FOR MORE INFO
CLERK@GREATBARTON-PC.GOV.UK**



Great Barton CE Primary School Newsletter



September 2025

www.greatbartonprimaryschool.co.uk

Exciting times ahead!

This year, we're learning how to take care of our planet and help each other. We want everyone—children, teachers, families, and our whole school—to make smart choices that are kind to the Earth and fair to people. Because when we learn and work together, we can build a better world for everyone!

Consumption and Waste

Our first sustainable goal focuses on consumption and waste. We have been taking part in the Digitally School Waste Challenge to help reduce food waste and improve our dining experience.

What can you do to reduce waste?

Food waste:

- plan for the week and try not to buy more than you need.
- use leftovers: and slightly bruised or wilting produce in smoothies or soups. Or turn leftover mashed potato or peas into delicious cake like Aspens!
- Compost food scraps and garden clippings to create nutrient-rich soil. We got some lovely compost this year in the school garden.

Eliminate Single-Use Items:

- carry reusable bags
- Use reusable water bottles and coffee cups instead of single-use plastic ones.
- Swap out paper towels and cling film for reusable cloths, silicone bags, and beeswax wraps.

Buy second-hand

- clothing, furniture, and other items
- give items a new purpose by repairing faulty zips, turning old clothes into rags, or repurposing jars for storage.

Recycle Correctly

- Rinse containers and sort materials properly - did you know if one household puts dirty recycling in the bin, the whole bin lorry's collection is contaminated and not recycled?

Shop with Less Packaging

- Buy in bulk to reduce the amount of single-use packaging.
- Choose loose items over ones that are heavily wrapped in plastic.
- Look for items with refillable packaging and choose local options when possible.

Open Events for Reception 2026

Is your child due to start school in September 2026? If so, please come and visit us on one of the following events:

- Thursday 2nd October 10-11:30
- Thursday 9th October 13:45 - 14:45
- Thursday 13th November: 13:45 - 14:45

Contact the school office to book a place
admin@greatbarton.suffolk.sch.uk
01284787353

The Golden Garden



Thank you so much to all of the families at our school. Thanks to the Walkathon fundraising in January, we fundraised enough to transform a rather drab courtyard into our new Golden Garden. Gardening club planted some new plants and bulbs. We are now waiting for a new picnic table before the first Golden Lunch!



Bury St Edmunds - Thurston - Gt Barton - Bury St Edmunds

M40

Operator	Monday to Friday (Except Bank Holidays)														Saturday						
	MU NSch		MU Sch		MU		MU		MU		MU		MU		MU		MU		MU		
	5	5	5	5	5	5	5	5	5	5	5	5	5	5	5	5	5	5	5	5	
Bury St Edmunds, West Suffolk College (adj)																					
Bury St Edmunds, Bus Station (Stand 1)																					
Bury St Edmunds, Railway Station (adj)																					
Fornham St Martin, Russell Baron Road (opp)																					
Great Barton, Shelter (adj)																					
Conyers Green, Free Church (adj)																					
Great Barton, Bunbury Arms (opp)																					
Great Barton, Barton Hamlet (adj)																					
Thurston, Mill Lane (adj)																					
Thurston, Maitings Garth (adj)	0730	0730	0830	0930	1030	1030	1030	1030	1030	1030	1030	1030	1030	1030	1030	1030	1030	1030	1030	1030	1030
Thurston, Genesta Drive (o/s)	0731	0731	0831	0931	1031	1031	1031	1031	1031	1031	1031	1031	1031	1031	1031	1031	1031	1031	1031	1031	1031
Thurston, Bracken Row (adj)	0733	0733	0833	0933	1033	1033	1033	1033	1033	1033	1033	1033	1033	1033	1033	1033	1033	1033	1033	1033	1033
Thurston, College Main Entrance (o/s)	0735	0735	0835	0935	1035	1035	1035	1035	1035	1035	1035	1035	1035	1035	1035	1035	1035	1035	1035	1035	1035
Thurston, Bassett Road (adj)	0739	0739	0839	0939	1039	1039	1039	1039	1039	1039	1039	1039	1039	1039	1039	1039	1039	1039	1039	1039	1039
Thurston, Rectory Gardens (o/s)	0744	0744	0844	0944	1044	1044	1044	1044	1044	1044	1044	1044	1044	1044	1044	1044	1044	1044	1044	1044	1044
Thurston, Shops (o/s)	0746	0746	0846	0946	1046	1046	1046	1046	1046	1046	1046	1046	1046	1046	1046	1046	1046	1046	1046	1046	1046
Thurston, Ryeields (opp)	0748	0748	0848	0948	1048	1048	1048	1048	1048	1048	1048	1048	1048	1048	1048	1048	1048	1048	1048	1048	1048
Thurston, The Acorns (opp)	0749	0749	0849	0949	1049	1049	1049	1049	1049	1049	1049	1049	1049	1049	1049	1049	1049	1049	1049	1049	1049
Thurston, Post Office (o/s)	0752	0752	0852	0952	1052	1052	1052	1052	1052	1052	1052	1052	1052	1052	1052	1052	1052	1052	1052	1052	1052
Thurston, Mill Lane (opp)	0753	0753	0853	0953	1053	1053	1053	1053	1053	1053	1053	1053	1053	1053	1053	1053	1053	1053	1053	1053	1053
Great Barton, Barton Hamlet (opp)	0757	0757	0857	0957	1057	1057	1057	1057	1057	1057	1057	1057	1057	1057	1057	1057	1057	1057	1057	1057	1057
Great Barton, Bunbury Arms (adj)	0758	0758	0858	0958	1058	1058	1058	1058	1058	1058	1058	1058	1058	1058	1058	1058	1058	1058	1058	1058	1058
Conyers Green, Free Church (opp)	0800	0800	0900	1000	1100	1100	1100	1100	1100	1100	1100	1100	1100	1100	1100	1100	1100	1100	1100	1100	1100
Great Barton, Shelter (opp)	0801	0801	0901	1001	1101	1101	1101	1101	1101	1101	1101	1101	1101	1101	1101	1101	1101	1101	1101	1101	1101
Fornham St Martin, Russell Baron Road (adj)	0808	0808	0908	1008	1108	1108	1108	1108	1108	1108	1108	1108	1108	1108	1108	1108	1108	1108	1108	1108	1108
Bury St Edmunds, Railway Station (opp)	0816	0816	0912	1012	1112	1112	1112	1112	1112	1112	1112	1112	1112	1112	1112	1112	1112	1112	1112	1112	1112
Bury St Edmunds, Bus Station (Stand 1)	0820	0820	0914	1014	1114	1114	1114	1114	1114	1114	1114	1114	1114	1114	1114	1114	1114	1114	1114	1114	1114
Bury St Edmunds, West Suffolk College (opp)																					

Sunday	
	no service

The 0730 and 1610 journeys are suitable for County High, St Benedict's and King Edward VI students with a short walk from/to Bury St Edmunds Bus Station or West Suffolk College. Mulleys has chosen not to serve these schools via Beetons Way due to the continued congestion in that area at these times.

- NOTES**
- NSch Not School Days
 - Sch School Days Only
 - 5 Funded by UK Government

OPERATORS

MU Mulleys Motorways 01359 230234

Suffolk 07/07/2025

Monday to Friday (Except Bank Holidays)

Service	70		70A		70		70A		70	
	SIM	SIM	SIM	SIM	SIM	SIM	SIM	SIM	SIM	SIM
Diss, Bus Station (adj)	0640	0730	0930	every	1330	1445	1630	1740		
Diss, Rail Station (adj)	0643	0733	0933	60	1333	1448	1633	1743		
Palgrave, Church (opp)	0647	0737	0937	mins.	1337	1452	1637	1747		
Worham, School (o/s)	0651	0741	0941		1341	1456	1641	1751		
Botesdale, Simonds Court (adj)	0656	0746	0946		1346	1501	1646	1756		
Rickingham Inferior, Church (opp)	0659	0749	0949		1349	1504	1649	1759		
Wattisfield, The Street (adj)	0703	0753	0953		1353	1508	1653	1803		
Stanton, Memorial (adj)	0708	0758	0958		1358	1513	1658	1808		
Ixworth, Village Hall (adj)	0716	0806	1006		1406	1521	1706	1816		
Thurston, College Main Entrance (o/s)		0816					1531			
Great Barton, A143 Bus Shelter (SW-bound)	0726	0826	1016		1416	1541	1716	1826		
Bury St Edmunds, Railway Station (opp)	0735	0835	1025		1425	1550	1725	1835		
Bury St Edmunds, Bus Station (Stand 7)	0740	0840	1030		1430	1555	1730	1840		
Bury St Edmunds, West Suffolk College (opp)		0845								

Saturday

Service	70	
	SIM	SIM
Diss, Bus Station (adj)	0730	every 1730
Diss, Rail Station (adj)	0733	60 1733
Palgrave, Church (opp)	0737	mins. 1737
Worham, School (o/s)	0741	1741
Botesdale, Simonds Court (adj)	0746	1746
Rickingham Inferior, Church (opp)	0749	1749
Wattisfield, The Street (adj)	0753	1753
Stanton, Memorial (adj)	0758	1758
Ixworth, Village Hall (adj)	0806	1806
Great Barton, A143 Bus Shelter (SW-bound)	0816	1816
Bury St Edmunds, Railway Station (opp)	0825	1825
Bury St Edmunds, Bus Station (Stand 7)	0830	1830

Sunday

no service
Spring Bank Holiday
no service
Summer Bank Holiday
no service

OPERATORS

SIM Simonds 01379 647 300
Suffolk 09/09/2024

Monday to Friday (Except Bank Holidays)

Service	70		70A		70		70A		70	
	SIM	SIM	SIM	SIM	SIM	SIM	SIM	SIM	SIM	SIM
Bury St Edmunds, St Benedicts Catholic School (o/s)									1615	
Bury St Edmunds, West Suffolk College (adj)									1620	
Bury St Edmunds, Bus Station (Stand 7)		0810	0930	every	1330	1415	1530	1630	1745	1845
Bury St Edmunds, Railway Station (adj)		0813	0933	60	1333	1418	1533	1633	1748	1848
Great Barton, A143 Bus Shelter (NE-bound)		0821	0941	mins.	1341	1426	1541	1641	1756	1856
Thurston, College Main Entrance (o/s)		0831					1551	1651		
Ixworth, Village Hall (opp)		0841	0951		1351	1436	1601	1701	1806	1906
Stanton, Memorial (opp)		0848	0958		1358	1443	1608	1708	1813	1913
Wattisfield, The Street (opp)		0853	1003		1403	1448	1613	1713	1818	1918
Rickingham Inferior, Church (adj)	0705	0857	1007		1407	1452	1617	1717	1822	1922
Botesdale, Simonds Court (opp)	0707	0900	1010		1410	1455	1620	1720	1825	1925
Worham, School (opp)	0711	0908	1018		1418	1503	1628	1728	1833	1933
Palgrave, Church (o/s)	0717	0913	1023		1423	1508	1633	1733	1838	1938
Diss, Station Road (opp)	0722	0918	1028		1428	1513	1638	1738	1843	1943
Diss, Bus Station (adj)	0725	0920	1030		1430	1515	1640	1740	1845	1945

Saturday

Service	70		70		70	
	SIM	SIM	SIM	SIM	SIM	SIM
Bury St Edmunds, Bus Station (Stand 7)	0830	every	1630	1745	1845	
Bury St Edmunds, Railway Station (adj)	0833	60	1633	1748	1848	
Great Barton, A143 Bus Shelter (NE-bound)	0841	mins.	1641	1756	1856	
Ixworth, Village Hall (opp)	0851		1651	1806	1906	
Stanton, Memorial (opp)	0858		1658	1813	1913	
Wattisfield, The Street (opp)	0903		1703	1818	1918	
Rickingham Inferior, Church (adj)	0907		1707	1822	1922	
Botesdale, Simonds Court (opp)	0910		1710	1825	1925	
Worham, School (opp)	0918		1718	1833	1933	
Palgrave, Church (o/s)	0923		1723	1838	1938	
Diss, Station Road (opp)	0928		1728	1843	1943	
Diss, Bus Station (adj)	0930		1730	1845	1945	

Sunday

no service
Spring Bank Holiday
no service
Summer Bank Holiday
no service

On journeys towards Diss, passengers for Diss Railway Station should use the 'Station Road' bus stop on Victoria

OPERATORS

SIM Simonds 01379 647 300
Suffolk 09/09/2024

Service	73		73A		73	
	Operator	SIM	SIM	SIM	SIM	SIM
	Notes		5	5	5	5
Diss, Bus Station (adj)	0650	—	—	—	—	—
Garboldisham, Fox (opp)	0700	0720	0930			
Hopton, Post Office (adj)	0705	0725	0935			
Market Weston, Village Hall (o/s)	0708	0728	0938			
Coney Weston, Memorial (opp)	0711	0735	0941			
Coney Weston, The Swan (o/s)	0715	0736	0945			
Barmingham, Royal George (S-bound)	0719	0739	0949			
Hepworth, Church Lane (adj)		0744				
Stanton, Memorial (adj)		0750				
Bardwell, Green (adj)		0758				
Ixworth, Greyhound (opp)		0808				
Ixworth, Village Hall (adj)		0810				
Thurston, Community College (in)		0825				
Bardwell, Post Office (opp)	0726	—	0956			
Stanton, Hilltop Way (opp)	0729	—	0959			
Stanton, Memorial (opp)	0733	—	1003			
Sheperds Grove, Cafe (opp)	0734	—	1004			
Walsham-le-Willows, St Mary's Church (o/s)	0740	—	1010			
Badwell Ash, Village Hall (opp)	0745	—	1015			
Hunston, Saxon Meadows (adj)	0748	—	1018			
Stowlangtoft, Church (opp)	0750	—	1020			
Pakenham, The Fox (adj)	0755	—	1025			
Great Barton, A143 Bus Shelter (SW-bound)	0801	—	1031			
Great Barton, Bunbury Avenue (adj)	0803	—	1033			
Bury St Edmunds, Bus Station (Stand 5)	0825	—	1047			
Bury St Edmunds, West Suffolk College (opp)	0833	—	1050			
Bury St Edmunds, The Greengage (adj)	0840	—	1105			

Saturday
no service

Sunday
no service

NOTES
 1 Operates when Thurston Community College is open
 5 Funded by UK Government
OPERATORS
 SIM Simonds 01379 647 300
 Suffolk 04/09/2025

Service	73		73A		73	
	Operator	SIM	SIM	SIM	SIM	SIM
	Notes		5	5	5	5
Bury St Edmunds, St Benedicts Catholic School (o/s)	1330	—	1600	1815		
Bury St Edmunds, West Suffolk College (adj)	1335	—	1615	1820		
Bury St Edmunds, Bus Station (Stand 5)	1339	—	1625	1824		
Great Barton, Bunbury Avenue (opp)	1343	—	1628	1828		
Great Barton, A143 Bus Shelter (NE-bound)	1345	—	1630	1830		
Pakenham, The Fox (opp)	1351	—	1636	1836		
Stowlangtoft, Church (o/s)	1355	—	1640	1840		
Hunston, Saxon Meadows (opp)	1357	—	1642	1842		
Badwell Ash, Village Hall (adj)	1400	—	1645	1845		
Walsham-le-Willows, St Mary's Church (opp)	1406	—	1651	1851		
Sheperds Grove, Cafe (adj)	1414	—	1659	1859		
Stanton, Memorial (adj)	1415	—	1700	1900		
Stanton, Hilltop Way (adj)	1419	—	1704	1904		
Bardwell, Post Office (o/s)	1423	—	1708	1908		
Thurston, Community College (in)		1535				
Ixworth, Village Hall (opp)		1548				
Ixworth, Greyhound (adj)		1550				
Bardwell, Green (opp)		1558				
Barmingham, Royal George (N-bound)	1430	1607	1715	1915		
Coney Weston, The Swan (opp)	1433	1611	1718	1918		
Market Weston, Village Hall (opp)	1439	1618	1724	1924		
Hopton, Post Office (opp)	1442	1621	1727	1927		
Garboldisham, Fox (opp)	1447	1626	1732	1932		
Diss, Bus Station (adj)	—	—	—	1942		

Saturday
no service

Sunday
no service

NOTES
 1 Operates when Thurston Community College is open
 5 Funded by UK Government
OPERATORS
 SIM Simonds 01379 647 300
 Suffolk 04/09/2025

St Nicholas Hospice Care

Local hospice invites community to Light Up a Life remembrance events this autumn

St Nicholas Hospice Care is once again inviting people across West Suffolk and Thetford to come together for its annual Light Up a Life remembrance events, offering a meaningful way to remember those they miss during the festive season.



This year's events will be held at local churches across the area including Sudbury, Newmarket, Bury St Edmunds, Lavenham, Thetford, Haverhill, and Mildenhall, with services starting in late November and continuing throughout December.

Each gathering will feature music, readings, and moments of reflection, providing comfort and connection for all who attend.

The hospice warmly welcomes everyone, whether or not they have a direct connection to St Nicholas Hospice Care. As in previous years, attendees are invited to have the names of those they wish to remember read aloud during the event. Names can be submitted via the hospice's website.

To find your nearest event, submit a name for remembrance, or make a dedication online, please visit www.stnicholashospice.org.uk/lightupalife or call the charity's Supporter Care Team on 01284 715566.

St Nicholas Hospice Care provides compassionate support for people living with dying, death, and grief throughout West Suffolk and Thetford. The charity relies on the generosity of the local community to continue its vital work.

Light Up a Life 2025: Bury St Edmunds dates and times:

- St Nicholas Hospice Care, Hardwick Lane, IP33 2QY on December 6 at 3.30pm (booking required)
- St Mary's Church, IP33 1RT on December 7 at 4.30pm
- Nicholas Hospice Care, Hardwick Lane, IP33 2QY on December 14 at 3.30pm (booking required).



Bury St Edmunds Mobile Library Service

Location	Stop	Route 1	Next Visit	Time
Oakampton House	1C	Route 1	4th November	10:00 - 10:20
School Road	1D	Route 1	4th November	10:25 - 10:50
Brand Road	12D	Route 12	20th November	10:35 - 10:45

[Mobile libraries | Suffolk Libraries](#)

Did you know that if you are a mobile library user you can have the books for 8 weeks rather than the usual 4? I discovered this by chance back in April!

GREAT BARTON THANKSGIVING FUND

VILLAGE HALL
ANNUAL GENERAL MEETING

Monday, 24th November 2025

At

7.30 p.m. in the Annexe

Open to the general public

You are most welcome to join us for the
Annual General Meeting of the Village Hall
Management Committee
followed by light refreshments – we are always
looking for local residents to help with
ideas and events.

YOUR VILLAGE HALL NEEDS

YOU



Great Barton Village Hall

Great Barton Playing Field



Please remember that all dogs should be kept on leads when walking around the playing field.

The village hall management committee have taken this decision to ensure the safety and wellbeing of all users of the green space.

Dogs should be kept off the football pitch during the playing season (End of August to May).

Dog waste bins are provided by the Parish Council around the field – please pick up after your dogs and put the waste in the bins.

We want all users to enjoy the area but if dogs continue to be observed being let off leads and dog poo found on the field the management committee will need to consider bringing in a no dog policy on the whole field.

Dogs are not allowed in the fenced off children's play area.

Please do not park on the verges of Cox Lane when using the playing field. Parking on the verges causes obstructions for local residents, can obscure the view of pedestrians and other road users and damages the verges in bad weather. The village hall car park is available for parking when using the field and play area.

On behalf of the Village Hall management committee



Village Hall Management Committee

If you would like to hire the hall please contact:
Diana Silverstone diana.74@hotmail.co.uk
<http://greatbartonvh.onesuffolk.net/>

The Hall committee is always looking for people willing to help with hall management.

GREAT BARTON LUNCHEON CLUB

We are a Luncheon Club which meets at Great Barton Village Hall
on the second Friday of each Month (except in August).

Members are welcomed with either a glass of sherry or fruit juice and served with a two course meal, followed by tea or coffee, at a cost of **£5.00 per person** (plus a very small yearly membership fee)

We are a very friendly and welcoming group. If you are 55 years or over and live in Great Barton and would like to join us, we would be delighted to hear from you.

Please contact: **Cindy Morgan**
01284 788487
cynthiamorgan249@btinternet.com

Luncheon Club 25 Years Ago



Molly Lumley formed Luncheon Club 25 years ago, she ran it with her team of helpers until 2016 when Brenda Turner and her new team took over. We have good food, good fun and a good friendship.

Great Barton History Society

The History Society meets in January, March, May, September and November on the first Tuesday of these months. We have a list of very interesting speakers lined up for 2025. We meet in the Great Barton Village Hall Annex at 2.30pm on the above Tuesdays and if you would like to come and visit us you would be very welcome, either with a view to joining us as a member for £10.00 per year, or as a guest. We usually charge guests £3.00 per visit. There will be a list of our up-and-coming speakers etc. pinned on the Village Hall notice board. We have a break from May until September but we traditionally have a Summer Outing. If you think you would be interested in visiting us or even joining the Club, please come along to one of our meetings.

Jane Bream. Secretary.

Contact Details:

Email: - J.bream711@btinternet.com

Tel:- 01284 702336.

Mob:- 07947595620

Conversations with Jean Batram

In 1932 a baby was discovered on an undisclosed doorstep in a cardboard box. From just about the worse start in life this child (Jean) thrived and this year celebrates her 93 birthday. Her mother Ethel Maud Boreham (although she did not know until much later) was in service in a large house somewhere between Newmarket and Cheveley frequented by royalty who came to watch their horses racing at Newmarket. Jean always wondered deep down if her father was from the aristocracy. Sadly she would never know, despite meeting her mother when she was around forty five years old and asking who her father was her mother would never divulge the secret.

Jean was taken as a baby to the Alexandra Children's Home where she remembers a large garden with a sandpit and lovely puddings she thinks called Creamola. At three years old, Mr Thompson the Suffolk County Council Children's Home officer took her to be fostered by Miss Waterman - a farmer's daughter who had lost her own mother in childbirth and lived with her grandparents at Rookery Farm, Felsham - now Rookery House. There were two other foster children Rosie and Judy.

When Miss Waterman's grandparents died and the farm was sold they moved into Danecroft, School Road, Great Barton where she has many memories of school life. Jean remembers war starting when she was six years old when a neighbour came running through the garden with the terrible news. One day the siren went off and two German bombers swooped down over the children whilst playing in School Road and went on to attempt to bomb the British Sugar factory. The boys not realising the implications thought it was all very exciting. (*An unexploded bomb was later dealt with by the bomb disposal unit*).

The infamous Ronnie Biggs was evacuated to Cockfield during the war and was brought to Great Barton to play with some of the children. Jean was about 8 and he was about 14 but "he was such a smart dresser, he had a belted corduroy jacket and matching shorts!"

As children the boys in the village made a raft and floated it on the pond where the school is now. Although Jean had been told by Mum not to go on it - of course being a tomboy she did - it tipped up hitting her in the face and she was drenched. When she got home she put newspaper in her boots and put them outside to dry, and never let on to her foster mother that she had been in the pond - she couldn't even swim they had to drag her out!

Miss Waterman who Jean refers fondly to as "Mum" was a wonderful educator. At 5 years old Jean knew her colours, figures and how to tell the time and knew the alphabet which she could sing backwards. This made her very unpopular with her teacher Miss Legge who told her off for being too clever and to "stop putting my hand up and give the others a chance". She couldn't understand what she had done wrong - she really did know a lot thanks to her foster mother who had been privately educated herself.

At fourteen the foster payments from West Suffolk stopped and Jean had to go out to work. She was placed with a family in Norfolk Road, Bury St Edmunds to look after two children. With no experience she went to her bedroom and cried as it seemed a very starchy household compared to the "free range" life with Miss Waterman. A French au pair was engaged to help but Jean noticed that the man of the house had taken a fancy to the au pair and kept winking at her behind his wife's back. She thought something was going on but had no worldly knowledge in those days. One day he came home from work and told her "if anyone wants me Jean I am upstairs with Jaqueline helping her with her English". She took the dogs out but the lady of the house came home from her riding lesson about three minutes after he had gone back to the office and had passed him, asking Jean what he was doing at home. Being rather naive she told her that he had been upstairs helping Jaqueline with her English - there was a hasty phone call and the next day Jaqueline was dispatched back to France!



Conversations with Jean Batram

Later West Suffolk Children's' Homes sent her to work for a surgeon on Northgate Street to look after five children which she describes as out of the frying pan into the fire! She was still only about fifteen and a half and also worked at a greengrocers shop near Garland Street.

She was married at seventeen to Raymond Clements who was eleven years her senior. The marriage took her out of the Children's Home care system and they were together for about thirty years until his death. She later met and married her second husband, John Batram who died about 12 years ago.

Jean is an amazing lady she has six children, two replacement shoulders, one hip and one knee replacement - a bionic woman!

She is very talented and has won several large prizes for crosswords in National Newspapers, even a car in the Spot the Ball competition plus her love of gardening.



She has also had some of her poems published. (She started writing poetry aged six)

The Gypsy Girl - (Published in 1992 in Arrival Press, Peterborough).

New Pet & Bully Cat

Over the fields where the wild flowers grow
Misty dewdrops wet my toes
And cause the poppy stems to bend
While jewelled cobwebs brush my nose.

*I climb an old and broken stile
Jump into clover - pink and red
And pause to wander for a while
As other people lay in bed.*

*Such beauty all around I see
And all within my touch
I dance with wild abandon free
This way of life means much.*

*My caravan is resting
Near some oak trees does it hide
Easel, paints and brushes
Wait for me inside.*

*But I'll walk again when twilight comes
Quietly and slow
When the hoot - owl calls to his mate
Over the fields where the wild - flowers grow.*

*A hamster in the house, the sheer audacity
Staring from your cage at me
I bet you taste like mouse*

*My missus gave me quite a pat
And said don't look at him like that
He's our new pet don't you forget
You great big bully cat*

*My word I've caught some mice
Out prowling late at night
And when my whiskers touch your nose
I'll give you such a fright*

*You hop about and stare me out
So cocky, so I've thought
I'll curl up now and have a sleep
And dream that you I've caught*

Conversations with Jean Batram

Ghost Stories - believe them or not!

Jean used to deliver the Mercury newspaper around the village on her bicycle and on one occasion she was approaching Barton House, on the site of the old hall, when a woman crossed the drive in front of her holding something in her hand. She braked hard but the woman disappeared. The then owner of the house, Mr Nice was outside stacking logs and asked her if she was alright as she looked a bit shaken, had she seen something? She relayed her story and although he would not commit to anything said she must have seen the ghost of Martha, who was one of the maids from the old Barton Hall which was destroyed by fire in 1914, she used to go out every evening to take a mug of oats for the horses across the road to the stables. He must have already heard this story but Jean never had so it was quite a shock. The Mercury later covered the story.

Similarly Jean took her husband to show him her old home in Felsham, travelling through Rougham at the junction to Bradfield and Felsham she saw a large house with archway and pillars over the door and it looked old but somehow gleaming! On the way home she wanted to show her husband but the house had disappeared.

Recorded from conversations with Jean (Cllr Elaine Read) - see references below:

The phenomenon of the disappearing house was seen by others as recorded in an article published in the Bury Free Press by Nicola Miller on 13 February 2022. Apparently in the last 150 years there have been other sightings and in a book 'Ghosts of Suffolk,' Betty Puttick christens the apparition, 'The Rougham Mirage'. She tells us of an eyewitness account and first reported sighting by Robert Palfry in 1860, who was enjoying the last light of a June evening in the fields of Rougham when he suddenly felt a chill in the air - suddenly, from nowhere, a large red brick house appeared, its gardens filled with summer blooms behind ornate iron gates, only for it to disappear right in front of him. Decades later his great-grandson reported the same phenomena while out with his horse and carriage with a local butcher, George Waylett. Somewhere between Bradfield St George and Rougham Green, the temperature dropped and the pony reared up and Waylett was thrown from the carriage, Cobbold caught a glimpse of a house shrouded in mist that slowly disappeared from view. Apparently George Waylett, claimed to have seen the house appear and disappear on two other occasions.

In 1926, a young school teacher, Ruth Wynne, and her 10-year-old pupil were on a countryside ramble on an October afternoon. As they walked down a path they found a brick wall to a large estate, green-yellow in colour and supporting huge iron gates: they decided to find out more about the estate back at home. When they asked about the grand house, no one could offer any help - there was, they were told, no grand mansion house where they had walked. When the pair retraced their steps, the wall and gates were nowhere to be seen. (Reported in John Harries 'Ghost Hunters Road Book'.

Reports from the East Anglian Daily Times: In the 1940s, Edward Bentley was delivering clothes catalogues for Aubyn Davies of Bury St Edmunds. As he and two colleagues drove down Southall Street, Edward spotted a large Georgian-style house set back from the road. Sensing potential sales, he asked the driver to stop and reverse but when he looked a second time, the house had vanished into thin air.

No local records seem to exist so this will remain a mystery. Early 18th century maps show a large house in the location of most sightings, possibly called King's Hall, but it seems unlikely that there would be no records of a Georgian-style house or that it wouldn't have been remembered in 1860. But fragments of a green-yellow brick wall have been found by researchers, suggesting a real house may well have stood in the area where the ghost mansion appears.

Anyone interested can research the full stories on archive.org

Digital Skills Café Latest News - Windows 11



At the Great Barton Computer Club we are looking forward to a new season of events. This is an important year for Windows users as Microsoft ends routine support for Windows 10 in October 2025. By now, members will be familiar with what this means and will have plans in place for the upgrade or not. From October, we'll run tutorials and workshops on Windows 11, helping members benefit from added security while learning its new features and design. Whether you've upgraded already or are still on Windows 10 but want to grow in confidence, come along to our friendly club to improve your skills, meet new people, and enjoy coffee, biscuits, and useful learning.

This year we've been running two beginners' groups, one for Windows and another for the iPad. If you want to get more from your laptop or explore the great apps available on the iPad, just get in touch. We welcome all levels of ability and make sessions enjoyable, interesting, and easy to follow.

We also run a popular Apple group, exploring the best apps and new technology such as AI. The iPad is a versatile system for entertainment, communication, and learning, and we enjoy showing how it can enrich daily life.

No experience is needed to join us. Every year we welcome newcomers with little or no computer knowledge. Many members start with limited skills, so don't worry about keeping up—we're an informal, friendly club here to help you enjoy your technology.

Contact us:

Email: Julie secretary.gbcc@outlook.com Phone: Bernard 07860 117680

On the Net <https://www.gbcc.onesuffolk.net>

Cost £20 a year

Circle dancing



Dancing in a circle is an ancient tradition common to many cultures for strengthening community and encouraging togetherness.

Modern circle dance draws on the diverse traditional dances of many countries. There is also a growing repertoire of new dances to classical and contemporary music.

Circle dances can be energetic or reflective. The aim is to experience the joy of dancing with others and to create a sense of well-being through enjoyable gentle exercise!

Each dance is taught, and everyone is welcome.

We meet in the village hall on the 2nd and 4th Wednesday of the month, from 2.30-3.30. A small and friendly group – so do come and try it out – no need to commit to a term. £6/session. So come on your own or with a friend (you do not need a partner) and give it a try!

Jen Larner 07896 495574
fb: west suffolk circle dance

jenlarner@gmail.com
www.jenlarner.com

Great Barton Footpaths and Defibrillator Locations

Full Address	Availability
Great Barton Village Hall, Elms Close, Great Barton, IP31 2NR	24/7 Access
East Barton Barns, 5-6 East Barton Road, Great Barton, IP31 2QY	24/7 Access
Great Barton Church Of England Primary Academy, School Road, Great Barton, IP31 2RJ	During School Opening hours (typically manned Mon – Fri 08:00-18:00)
Great Barton Free Church Hall, Mill Road, Great Barton, IP31 2RU	24/7 Access
The Bunbury Arms, Ixworth Road Bury St Edmunds IP31 2NX	Currently being installed (as newsletter goes to print) Will have 24/7 Access.

See live footpath maps on our website (showing Great Barton and surrounding areas):
<https://greatbarton-pc.gov.uk/footpaths-and-public-rights-of-way/>

Great Barton Emergency Response Plan (Residents Guide - Winter 2025)

Should an emergency arise in the home or immediate vicinity, which requires outside help, the residents of Great Barton should summon the **EMERGENCY SERVICES, POLICE, FIRE and AMBULANCE as appropriate by dialling 999, 111 or 112**. If for any reason they are unable to do so then a neighbour or their Main or Reserve Local Coordinator should be contacted.

Introduction

In response to the Civil Contingencies Act 2004 the Parish Council has an Emergency Response Plan for our own locality. The response might be required if there is an emergency or disaster caused by man or nature where the village is cut-off or where the emergency is so widespread that the normal emergency responders cannot cope, i.e. a Pandemic. In such cases the village would be dependant upon the resources from within and the self-help provided by the residents. It is sensible to have a plan in place to make best use of the resources available rather than trying to make it up during the emergency, which would be wasteful of time and effort and could cost lives. The Parish Council has an Emergency Response Plan in place based on community self-help.

Volunteers

An Emergency Operations Team of 8 volunteers will take the lead on behalf of the Parish Council. The village has been divided into 21 sectors, each sector has a volunteer Main and Reserve Local Coordinator. The Coordinators are your conduit to the Emergency Operations Team. In addition there is another team of volunteers who are willing to help run a Welfare Centre if required. In total approximately 120 plus volunteers have agreed to do their best to assist the Parish Council when the emergency responders cannot react due to wide spread demand.

Emergency Response Plan

It is envisaged that most families will be able to cope and would prefer to remain in their homes should an emergency situation arise. People directly affected by the emergency and vulnerable persons will be cared for in their local community as far as possible. If required a Welfare Centre will be opened to provide a refuge where people affected by a disaster or emergency can have their most immediate needs seen to. This leaflet gives you essential information so you can make best use of the help available if there was an emergency.

Main and Reserve Local Coordinators

No	Sector Area	Main & Reserve Co-ord
1	Downing Drive, Maple Green	John Pitcher Malvin Crissell
2	The Park, West of and including Garden Close	Allan & Chris Howell Alan Thompson
3	Diomed Drive NE, Eleanor Place, Bunbury Avenue, Dunwich Place, Chester Place, Greenway	David Hissett David Lockyear
4	School Road, School Lane, Lodge Close, Beech Park, Conyers Way E, Chestnut Close, Aspen Close	David & Julie Eaton Bryann Ward
5	Ixworth Road, Thurston Road SW, Icept Close, Moreland Drive, Barton Mere House to Grange Farm	Steve Hudson Christina Ghit
6	Mill Road North, Conyers Green, Livermere Road to Vicarage Farm Lane, Holy House Drift to the Mill House	Martin Pearson Kelly Dowson
7	The Coppice, Lithgo Paddock, Edes Paddock	Matt Wagstaff David Parkinson
8	Anglesey Place, Diomed Drive South, Tewkesbury Place, Fornham Road NE, Bury Road	Catherine Hart Brian Skinner
9	Green Lane, Shinham Bridge, Church Road	Lynda Brignall Peter Newby, Eliz. Bloomfield
10	The Street SW, East Barton Road, The Park East of Garden Close, Park Lane	Krashma Patel Viv & Gwyn James
11	The Street NE, Cox Lane, Elms Close	Andrew Hopwood Natalie Bailey
12	Barton Hamlet, Mere Farm Lane	Ruth & Tony Humes Sheila & Malcolm Lodge
13	Mere Close, Pakenham Road, Thurston Road NE	Charlotte Hobbs Gill Watson
14	Brand Road, Livermere Road extreme NE end, Puttockshill	Amanda Rutterford Jane & John Davis
15	Livermere Road, North of Leeds Wood, Vicarage Farm Lane inc. Vicarage Farm and Nix Green Farms	Peter Ward & Karen Payne Victoria & David Edwards
16	Conyers Way, Mill Road South	Keith Murray Clair Greenacre
17	Livermere Road North of Trefella, to Mill Road, Nacton Lane	Mike Jones Andrew Hamilton
18	Diomed Drive West, Derby Place, Woodlands Place, Livermere Road South of Trefella, Fornham Road NW, West Wood	Reg Harris Marcus King
19	The Avenue, Barton Stud, Westfield Farm, Anglenook Cottages, Fornham Road West	Linda Mothersole Rachel Rannochoan
20	Cattishall	Chris & Joanne Mayer Andrew Brentnall
21	East Barton	Andrew & Vanessa Hooker Claire & Wayne Green

Great Barton Emergency Response Plan

Address	Mobile No.	Telephone No.
11, Maple Green, GB IP31 2SN 18, Downing Drive, GB IP31 2RP	07 714 455 007 07 887 544 692	01 284 787 787 01 284 787 218
7, Garden Close, GB IP31 2SY Park Corner Cottage, The Park, GB IP31 2SX	07 799 745 384 07 340 184 389	01 284 787 728 01 284 787 759
17, Diomed Drive, GB IP31 2TH 4, Chester Place, GB IP31 2TL	07 903 003 077 07 789 900 870	01 284 787 266
The Cedars, School Lane, GB IP31 2RQ 4, Aspen Close, GB IP31 2RN	07 841 215 182 07 871 111 162	01 284 787 718 01 284 787 508
2, Icepits Close, GB IP31 2PB Icewoods Thurston Road, GB IP31 2PL	07 879 173 026 07 405 619 032	
1, Conyers Green, GB IP31 2RX 4, Conyers Green, GB IP31 2RX	07 719 899 454 07 788 551 526	01 284 788 439
9, The Coppice, GB IP31 2TT 10, The Coppice, GB IP31 2TT	07 968 080 382 07 714 773 401	
Mayfield House, Bury Road, GB IP31 2TS 5, Tewkesbury Place, GB IP31 2TP	07 472 996 188	01 284 788 007 01 284 787 469
8A, Green Lane, GB IP31 2QZ 8, Green Lane, GB IP31 2QZ	07 846 954 924 07 860 836 110	
Fir Tree Cottage, The Street, GB IP31 2QP Dower House, Park Lane, GB IP31 2RG	07 929 664 491 07 546 663 274	01 284 788 759
Field View, Cox Lane, GB IP31 2NS The Old Police House, The Street, GB IP31 2NP	07 917 717 955 07 775 897 553	01 284 787 184
5, Mere Farm Cottages, GB IP31 2PH 9, Barton Hamlet, GB IP31 2PP	07 890 630 614 07 900 375 499	01 359 234 468
Mulberry House, Pakenham Rd GB IP31 2PD Newbiggin, Thurston Road, GB IP31 2PW	07 818 411 697 07 770 905 275	01 359 232 392
Peacehaven, Brand Road, GB IP31 2PZ Oakwood House, Livermere Road, GB IP31 2QB	07 786 357 563 07 876 132 526	01 359 233 075
Sunnyside, Livermere Road GB IP31 2QE 2, Livermere Close, GB IP31 2QE	07 961 811 604 07 469 193 862	
Woodlands, Mill Road, GB IP31 2RU 31, Conyers Way, GB IP31 2SW	07 771 545 138 07 795 626 829	
White Gables, Livermere Road, GB IP31 2RZ Grove End, Livermere Road, GB IP31 2SB	07 917 353 277 07 818 071 663	01 284 788 428
Hambledon, West Wood, GB IP31 2SF 12, Diomed Drive GB IP31 2TD	07 918 404 559 07 974 413 583	01 284 787 311
Gt. Barton Lodge, The Avenue, GB IP31 2SQ 1, Anglenook Cottage, Bury Road, GB IP31 2SJ	07 825 343 637 07 920 046 563	01 284 787 663
Cattishall Farm, Cattishall, GB IP31 2QT 2, New Cottage, Cattishall, GB IP31 2QT	07 738 936 496 07 919 563 170	01 284 787 340 01 284 787 148
Shrubwood Cottage, East Barton Rd, GB IP31 2QY 1, Barton Place Cottages, GB IP31 2QY	07 825 260 630	01 284 788 214

Contact details for the Emergency Operations Team			
Name	Address	Telephone No.	Mobile
John Roe	'Nyah-Koti', Livermere Rd	01 284 787 749	07 845 529 923
David Murray	Sherborne House Livermere Road	01 284 788 606	07 825 172 446
Clare Hopwood	Field View, Cox Lane		07 787 516 401
Josh Pirt	1, Mere Farm Lane	01 359 231 011	07 961 863 866
Simon Stockdale	The Orchard, The Park		07 572 037 615
Eddie Gibson	10, Green Lane	01 284 788 384	07 484 602 289
Nicola Crouch	38, The Coppice	01 284 788 611	07 739 852 714
Maggie Dunn	The Laurels, Mill Road	01 284 787 357	07 977 875 882

Triggering the plan

If necessary Facebook will be used to inform the community that the plan has been triggered. Contact your Main Local Coordinator if you need help or require further information. If they are unavailable contact your Reserve Local Coordinator.

Welfare Centre

The Village Hall is the prime building to be used as the Welfare Centre provided it has not been adversely affected by the Emergency. Your Local Coordinator will know if the Welfare Centre is open and in which village building it has been located.

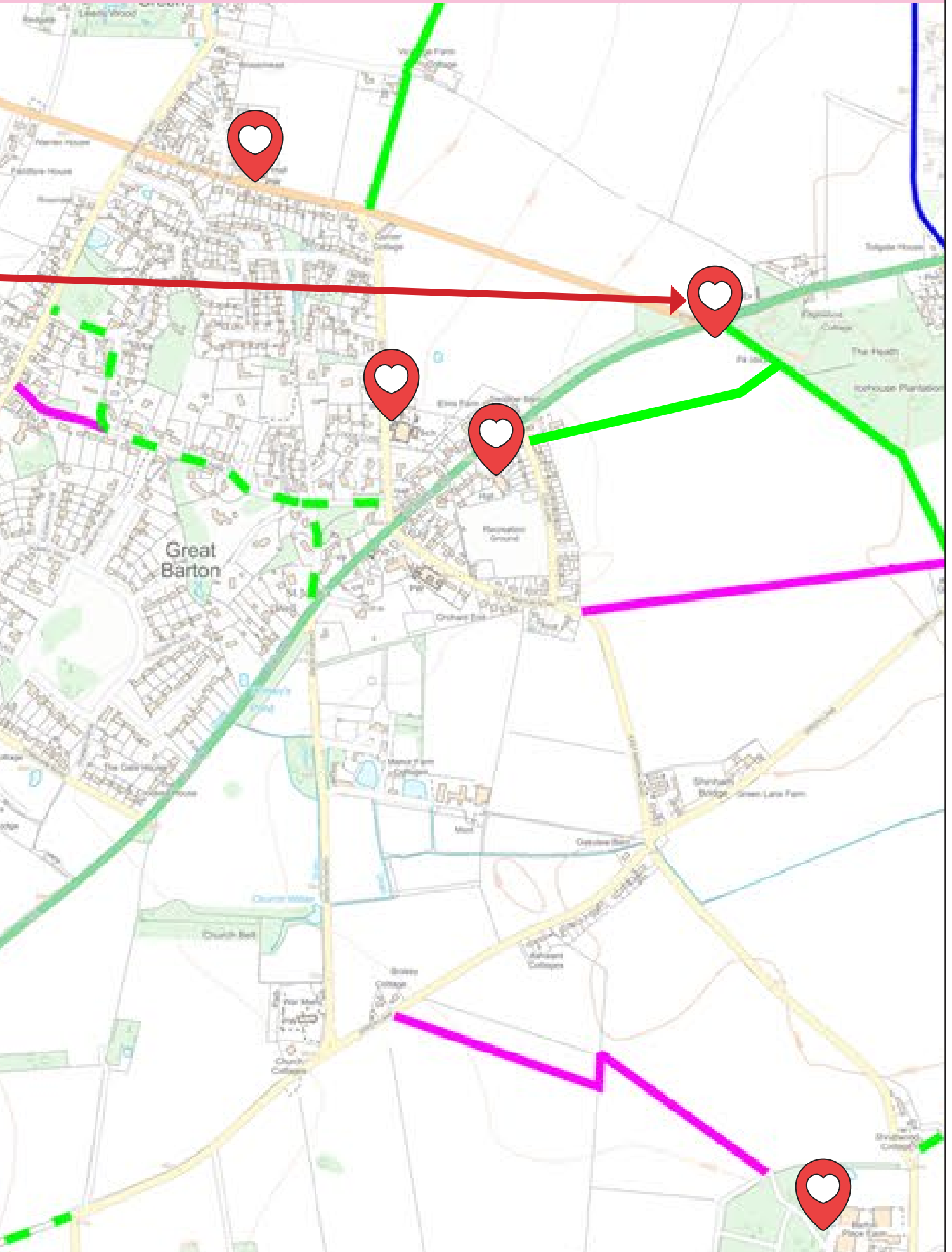
Vulnerable Persons

Elderly people, persons living alone, non English speaking, those with disabilities or medical conditions, are particularly vulnerable during emergencies. Also when water, electricity or communications network are cut off. It may be difficult, dangerous or just impossible for them to summon assistance because of immediate conditions. If you let your Local Co-ordinator know now before the emergency that you could be such a person, the Local Coordinator can ensure that you are alright should an emergency arise. Note, details of vulnerable persons will be kept secure, only the Emergency Operations Team, and your Main and Reserve Local Coordinator will know your name.

Retention

It is intended you retain this leaflet, placing it with other self-help emergency guidelines. Content will be reviewed yearly and reissued in the Winter Edition of the 2026 Village Newsletter.

Great Barton Footpaths and Defibrillator Locations



Great Barton WI

Interesting facts!

The National Federation of Women's Institutes is marking its 110th Anniversary this year

Queen Elizabeth II joined the WI in 1943 and became president of the Sandringham branch in 2003, following in the footsteps of the Queen Mother. In 2009 she addressed the members

"I am very pleased to be here with you once again at the January meeting. I have read the annual report with great interest, and I am heartened that the Sandringham branch of the W.I. continues to flourish, particularly in this 90th anniversary year".

Recently, in recognition of the 110th anniversary, Prince William and Princess Kate visited the WI in Sunningdale, Berkshire, where they chatted with members and learned about the group's community projects.

Looking to the future, in this special 110th anniversary year, our National Federation requested members' wishes.....

"I hope every woman is valued and respected for the person they are, that no woman feels abandoned or alone, and that they feel secure in the knowledge that WI is there for all women, everywhere"

"That every woman should feel safe in her own home"

"Use knowledge gained by those who have gone before to forge a path for the greater good of all women"

Our Great Barton WI's annual programme encompasses a broad selection of topics to which ladies from our area are most welcome to attend (no charge for the first 2 visits!)

In September we enjoyed an inspiring presentation entitled 'The Life and Times of Edith Cavell' who was born in Swardeston, Norfolk. She became a dedicated nursing heroine who cared for countless First World War soldiers from either side of the battlefield. Alas, her cause of death was execution by firing squad in Belgium. After the war, her body was returned to Britain for a memorial service at Westminster Abbey and then transferred to Norwich, to be laid to rest at Life's Green on the east side of the cathedral.

At the end of our presentation a handwritten heart-wrenching poem about Edith Cavell was read to us by our WI member whose mother, then aged 12, had written that poem! The poem has been offered to Norwich Cathedral for display in their Edith Cavell Museum.

Our October meeting was a demonstration of Stained Glass by Michelle Russel from Elmswell.

November being a rather unusual craft evening preparing decorations for our WI annual Christmas tree contribution to support Great Barton church; additionally preparing table decorations for our annual Christmas dinner with musical entertainment by 'The Accidentals & Flat Broke'

Our early 2026 programme will include 'chair dancing', 'Tales from the Bench', The Doxa project and a social quiz night

Being health conscious and enthusiastic about the outdoors, our monthly walks have included Southwold, Woodbridge, Grantchester and the river Linnet at Ickworth National Trust

Visiting many venues, our monthly lunches and coffee mornings/afternoon teas are lovely social times to chat and make new friends.

Our 92 year-old Great Barton WI proudly retains its traditional values whilst also being forward thinking.

Great Barton WI was leading the national trend in June this year by inviting East Anglia Ambulance volunteer, Paul Raynor, to educate us on CPR and accessing a Defibrillator. We concluded the evening knowing that we, as 'Bystanders can be Lifesavers'.

Our group of friendly ladies meets on the first Thursday evening of the month at 7.30pm in the village hall to enjoy friendship, fun and learning!

We guarantee you will receive a warm welcome

'Don't be shy – give us a try!'

Margaret Broster co-president



Community News, Events & Clubs



Despite the colder weather as winter approaches, Scouting continues in full swing! This year, we're hoping to stay warmer than ever, thanks to our brand-new heaters, replacing ones that had been in use for over 50 years. A huge thank you to everyone who supported our fundraising efforts to make this possible.

Winter is competition season, with our young people taking part in 10 Pin Bowling, Dodgeball, and Quiz competitions against other local groups. Last year, we won the Dodgeball trophy and we'll be doing our best to defend our title!

Our Beavers are getting ready for a Christmas-themed indoor sleepover, packed with crafts, games, and food. The Cubs have just returned from an action-filled trip to Thriftwood in Essex, where they enjoyed a wide range of adventurous activities.

Looking ahead, our Scouts are preparing for Winter Camp. They'll be braving the elements under canvas, but with plenty of layers, hot food, and campfires to keep them warm, it promises to be a great experience.

If your child would like to join us, or if you'd like to get involved as a volunteer, we'd love to hear from you!

Jonathan Corwin. (Group Lead Volunteer)
<https://www.gtbartonscouts.co.uk>

Great Barton Scouts are continuing their fundraising efforts and are pleased to say we have been selected as one of the recipients of the Tesco Blue Token scheme!

We will be one of the options to vote for from the start of October 2025 until the middle of January 2026. If you are in Tesco please vote for us so that we can continue to provide opportunities for children to have fun, make friends, learn life skills and enjoy the great outdoors!

We hope to use the money we receive towards the purchase of new camping and outdoors equipment so the more we are able to raise means more children will be able to participate.

Thank you very much for your support.



Squirrels

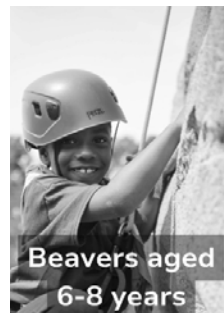
Take the leap together

The newest branch of the Scouts family tree. Where 4-6 year olds can join in too

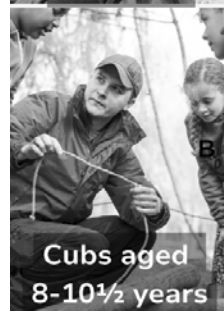
This is an age when minds are fizzing, when energy and curiosity levels are sky high, when little lives are full of wow and wonder. Set them climbing the tree. Who knows how far they'll reach?

At Great Barton Scout Group we would love to open a Squirrels section, but we need your help to make this happen. We're looking for volunteers to help give 4-6 year olds a chance to join the fun. You might be a parent, grandparent, or someone who enjoys being creative, getting outdoors, or sharing new experiences with young children.

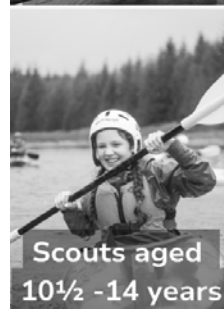
No experience in Scouting is needed, just a willingness to have a go! We'll be there alongside you to help, with support, guidance and training.



Beavers aged 6-8 years



Cubs aged 8-10½ years



Scouts aged 10½ -14 years

We believe that Scouting prepares young people for the future. We help them do more, learn more by doing and be more. Scouting is about young people discovering their potential and powering their future.

At Great Barton Scout Group we have spaces for boys and girls in all the sections, we meet during term time on the following days:

- Beavers meet on Wednesdays 5-6.15pm
- Cubs meet on Mondays 6.30-8pm
- Scouts meet on Thursdays 7-8.45pm

More information at
www.gtbartonscouts.co.uk
Email: glv@gtbartonscouts.co.uk
#SkillsForLife

Note that our Scout Hut is available for hire, as well as a small marquee.

For all enquiries, email Jonathan at glv@gtbartonscouts.co.uk, or phone 07764 815763



FREEDOMCHURCH

Mill Road, Great Barton, IP31 2RU. www.freedomchurch.org.uk

CHURCH GATHERINGS

1st & 3rd Sundays

CHURCH ON LOCATION

10.30am and 4.30pm

GREAT BARTON & THURSTON

2nd & 4th Sundays

@Freedom Church 10.30am

5th Sunday

Prayer: Bring: Share meal

OUR VISION

**COMMUNITY
PRESENCE
RESOURCE**

Heart of the **community**

A place where **God** dwells

A **resource** centre for all

HIRE OUR BUILDING

Spaces are available to hire through out the week. For more information please email: hello@freedomchurch.org.uk

If you have any questions, would like to find out more about Freedom Church, check what's happening or discover about volunteering opportunities please get in touch by emailing:

hello@freedomchurch.org.uk

Freedom Tots

**EVERY WEDNESDAY
10.00AM- 12.00PM**

**SOFT PLAY, CRAFT,
STORY TELLING &
MORE...**

**£3.50 PER
CHILD**



SEND CAFE



COME AND JOIN US AT
FREEDOM CAFE
EVERY THURSDAY
10:30AM TO 12:00PM
FOR FUN, GAMES
& ACTIVITIES

to find out more email:
community@freedomchurch.org.uk

HONEY POT CAFE

Every Friday
10:30- 12:00pm

A cafe for over 65s
providing activities, to build
friendship and bring joy



Christians Against Poverty
Debt Centre

Please contact debt centre
manager Sally Murray for
more information by
emailing:
sallymurray@capuk.org

FREEDOM WORSHIP

Holy Spirit led worship
night held by the
Freedom Worship
Collective

Every 1st Thursday

7.30PM at
Bella Vista



Freedom Community Cafe

**THE HEART OF THE COMMUNITY
TUESDAY TO FRIDAY
10:00AM - 3PM**

WWW.FREEDOMCHURCH.ORG.UK/FREEDOM-CAFE

Great coffee, snacks and light lunches in a warm, welcoming space. Family Lounge available for you to enjoy a relaxed coffee while your little ones play. Why not pop in and give us a try.

Fresh handmade lunch is served from 11.30am to 2pm.

Throughout the week we have all sorts of community activities going on including Honey Pot Dementia Cafe, Breastfeeding Support, Tots Soft Play Cafe, SEND cafe and so much more!

Keep an eye out on our Facebook page for regular updates.

www.facebook.com/freedomcafegb



FREEDOMCHURCH

Mill Road, Great Barton, IP31 2RU. www.freedomchurch.org.uk

Church Information

Church Institute

The Church Institute is a lovely venue, available for private and regular club bookings. It is also available for parties, celebrations, wedding receptions, funeral wakes and other general use.

For prices and enquiries please contact:
Linda Scoles 01359 230392 or Reverend Ben Edwards at revdbenjaminedwards@gmail.com

Benedictine Sisters of Our Lady of Grace & Compassion

Montana , East Barton Rd, Great Barton has a Roman Catholic mass on a **Sunday at 10.30am** and weekdays **Monday to Friday at 8.15am**

Holy Innocents Church

Church Officers

Ways to contact us

Vicar: Reverend Ben Edwards

Email: revdbenjaminedwards@gmail.com

Churchwardens: Tim Frost 01284 787442

Angela Pearce 01359 230395

Verger: Linda Scoles 01359 230392

Pcc Secretary: Jane Dalton 01284 788613

Treasurer Kathy Drakes 01284 787746

www.greatbartonandthurston.org.uk

Our on-line magazine can be found on our website:

<http://themessengergtbarton.suffolk.cloud>

The Church Facebook pages:

Holy Innocents: <https://www.facebook.com/Holy-Innocents-Church-Great-Barton685807921585678/>

St Peter's: <https://www.facebook.com/St-Peters-Church-Thurston-1790473917903849/>

Message from Revd Benjamin Edwards

Great Barton is undeniably part of a growing local area. While many of the new homes are currently concentrated in neighbouring areas like Thurston, the arrival of many vibrant young families in our vicinity is already changing the local dynamics, and new housing is on our own horizon. Many of us cherish the unique character of Great Barton, and it's natural to feel a quiet concern that rapid growth in the local area might dilute the very essence that makes this village feel like 'home'.

But what if we, the existing heart of Great Barton, held the key to preserving and even enhancing our local community's character during this exciting period of change? The true character of Great Barton isn't solely defined by its boundaries. It lives in the warmth of a shared smile, the spontaneous offer of help, the friendly wave across the street, and the collective spirit that unites us. It's the feeling of belonging, the mutual care, and the knowledge that we are a cohesive local community. A growing area doesn't automatically mean a less connected one. In fact, it presents a wonderful opportunity to expand our reach and prepare for our future.

This is where each of us can play a vital role, both in proactively engaging with our immediate neighbours and in setting the tone for the new families who will eventually move to Great Barton. Simple acts of neighbourliness—offering a friendly "hello" to a new face on your morning walk, welcoming families from surrounding villages to use our facilities, or simply making a new parent at the school feel seen and valued—can transform a house in a neighbouring village into part of our wider community. The Christian message to 'Love thy neighbour' resonates deeply here, calling us not just to tolerate, but to actively care for those around us, particularly those who might feel a little lost or isolated in a new environment. This welcoming spirit will be the most crucial element we need to cultivate now, long before the first foundation stone is laid here in Great Barton.

By consciously extending our existing community spirit to our neighbours, both near and future, we don't erode our character; we strengthen it. We demonstrate that Great Barton's heart is big enough to embrace more people, and that our traditions of care and connection are robust enough to grow. Let's ensure that as the local area expands, Great Barton's soul – its kind, connected, and welcoming soul – expands right along with it. Let's be the solution, making sure that every new local resident feels not just near Great Barton, but truly part of our shared local community.



Mrs Borley with Mrs Ratley and Father Ben Edwards on her last day before retirement at Great Barton Primary Adacemy.

Great Barton and Thurston Benefice Services

NOVEMBER 2025

- Sunday 2nd November:** Holy Communion, All Saints at St Peter's at 10.30am
Benefice Service, 'All Souls', Holy Innocents at 3.30pm
- Wednesday 5th November:** Holy Communion (CW) at Montana at Gt Barton at 11.15am
- Sunday 9th November:** Service of Remembrance, at St Peter's War Memorial at 10.45am
Service of Remembrance, at Holy Innocents War Memorial at 10.45am
Choral Evensong at Holy Innocents at 3.30pm
- Wednesday 12th November:** Holy Communion (CW) at St Peter's at 10.30am
- Sunday 16th November:** Holy Communion (BCP) at St Peter's, Thurston at 8.30am
Benefice Communion Service, at Holy Innocents, at 10.30am
- Wednesday 19th November:** Holy Communion (CW) at Holy Innocents at 10.30am
- Sunday 23rd November:** All Age Communion, at St Peter's at 10.30am
- Wednesday 26th November:** Holy Communion (CW) at St Peter's at 10.30am
- Sunday 30th November:** All Age Communion, at Holy Innocents at 10.30am
Advent Carol Service at Holy Innocents at 5.00pm

DECEMBER 2025

- Wednesday 3rd December:** Holy Communion (CW) at Montana at 11.15am
- Sunday 7th December:** Benefice Service, Sung Eucharist, at Holy Innocents, Great Barton at 10.30am
Choral Evensong at St Peter's at 3.30pm
- Wednesday 10th December:** Holy Communion (CW) at Holy Innocents, Great Barton at 10.30am
- Thursday 11th December:** ATC Carol Service at St Peter's at 7.00pm
- Sunday 14th December:** Holy Communion at St Peter's at 10.30am
Nine Lessons and Carols at Holy Innocents at 6.00pm
- Wednesday 17th December:** No Service
- Friday 19th December:** Carols by Candlelight at St Peter's Church at 7.00pm
- Sunday 21st December:** Holy Communion (BCP) at St Peter's at 8.30am
All Age Holy Communion at Holy Innocents at 10.30am
- Wednesday 24th December:** Crib Service at St Peter's, Thurston at 2.00pm
Crib Service at Holy Innocents, Great Barton at 4.00pm
Bethlehem Midnight Mass at St Peter's at 9.00pm
Midnight Mass at Holy Innocents, Great Barton at 11.30pm
- Thursday 25th December:** Holy Communion (BCP) at St Peter's at 8.30am
Benefice Christmas Morning Holy Communion at Holy Innocents, at 10.00am
- Sunday 28th December:** Benefice Holy Communion at St Peter's at 10.30am
- Wednesday 31st December:** No Service
- Sunday 4th January 2026:** Benefice Sung Eucharist (Patronal Service) at Holy Innocents at 10.30am
Choral Evensong at St Peter's at 3.30pm

(CW Common Worship, BCP Book of Common Prayer)

Holy Innocents & St Peter's

We're joining Tik Tok - scary but we're having a crack at it! You can catch up with what our church is talking about, thinking about and doing on Tik-Tok and Instagram (@gtbarton_and_thurstonchurches) as well as Facebook. Here are the QR codes for our Tik Tok & Instagram pages!



Our Facebook pages can be found at.

St Peter's Thurston: <https://www.facebook.com/profile.php?id=100068920536175>

Holy Innocents Great Barton: <https://www.facebook.com/profile.php?id=100067489149725>

Blackbourne U3A



Blackbourne U3A is part of a UK-wide movement which brings together people, who are no longer in full-time employment, to meet new friends, develop their interests and pass their expertise onto others in a friendly and informal environment.

Formed over 35 years ago, there are now over 1,000+ u3as across the UK, with thousands of interest groups between them and more than 450,000 members nationally - plus we're growing every day.

Blackbourne u3a draws most of its members from the villages to the east of Bury St Edmunds (Great Barton, Thurston, Elmswell etc) although some come from further afield. Some members belong to more than one u3a. Membership for 2024-2025 is £10.

Blackbourne u3a holds a monthly meeting at the New Green Centre, Thurston, this is normally on the first Monday of each month (not August, if the Monday is bank holiday check website). We have guest speakers who cover a wide range of subjects such as "The Dig at Sutton Hoo", "Suffolk witches" and "Terry Wogan's hair weave!". Refreshments are available before the meeting.

Throughout the year we arrange a number of outings to theatres and gardens, you must be a u3a member to join one of these.

We have over twenty interest groups including crafts, walking, travel, photography and tai chi. We are always looking for new groups. If there is something that interests you that is not covered it could be possible to set-up a new group, you could even lead it!

The u3a national body – the Third Age Trust - looks after all the u3as in the UK, providing educational and administrative support. They also run workshops and on-line learning for member

If this interests you details can be found at our website www.blackbourne-u3a.org.uk, by emailing our membership secretary at membershipsecretary@blackbourne-u3a.org.uk or by phone on 01359 408151.

Community News, Events & Clubs

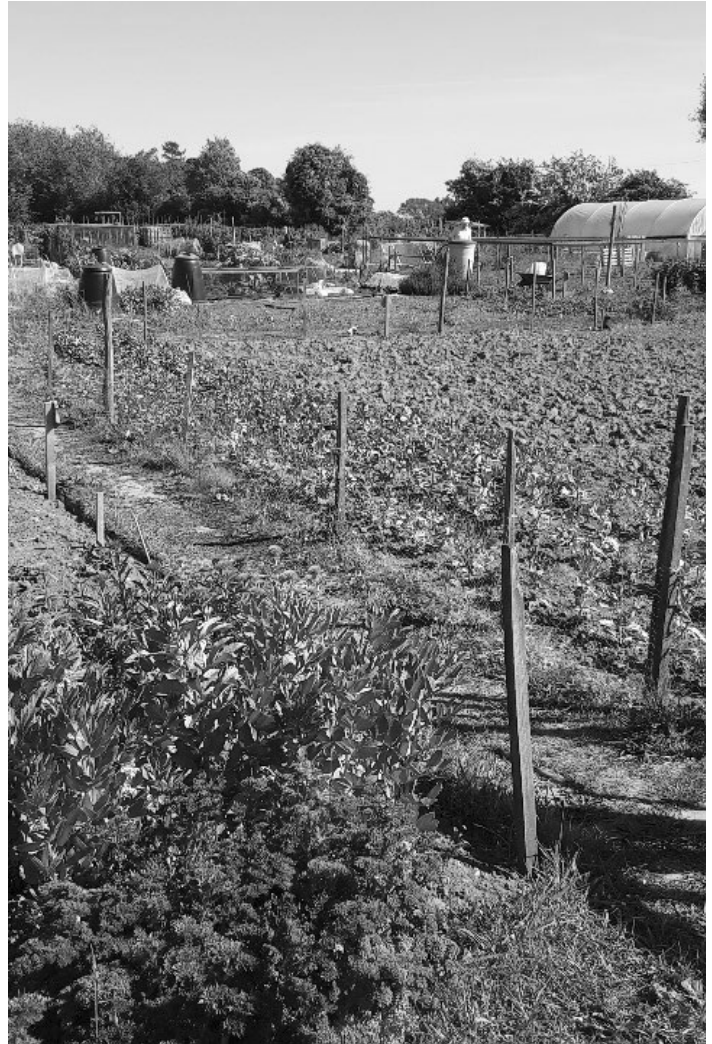
Great Barton Allotment Association

As the days grow shorter and the air turns crisp, many might think the gardening season is over — but winter is actually one of the most rewarding times to be on the allotment! Whether you're an experienced grower or a complete beginner, this is the perfect season to prepare, plan, and even plant for the year ahead.

Winter allotment life is about more than just vegetables. It's a time to enjoy quiet moments outdoors, connect with nature, and keep your plot thriving. Hardy crops like garlic, onions, and broad beans can be sown now, while fruit bushes and rhubarb crowns settle in perfectly over the colder months. With a bit of planning, you'll set yourself up for an early spring burst of growth.

Even when the ground is too cold to dig, there's plenty to do — tidy up beds, build compost bins, repair sheds, or simply enjoy the peaceful winter atmosphere. Fresh air, exercise, and the satisfaction of growing your own food don't stop when summer ends.

Plots are available now, so why not make this winter the start of your allotment journey? Join a friendly community of growers, get outside, and grow something amazing — even in the cold! Contact our secretary at gballotments@gmail.com for more information.



Great Barton PTFA

Great Barton PTFA Bag2School textiles collection.

The items collected will be sold by weight, and the proceeds will contribute to their yearly fundraising efforts, providing more funds for school projects. This is a great opportunity to raise money for our village school!

We welcome the following 'good quality' items for reuse:

- Men's, ladies', and children's clothing
- Paired shoes (please tie them together or use an elastic band)
- Handbags
- Hats
- Bags
- Scarves and ties
- Jewellery
- Socks
- Bras

Please note that we cannot accept the following items: - Soft toys - Household linen (including curtains) - Household towels and bedding - Cushions and pillows

You can drop off bags at:

11 Mere Close, IP31 2PE from 5th to 27th January.

Thank you for your support!

Village Directory of Clubs and Societies

Badminton Club Ann Tee	01284 788161	History Society Jane Bream j.bream711@btinternet.com	01284 702336
Bowls Club (Outdoor) Richard Weller Richardweller1956@gmail.com www.greatbartonbowlsclub.webnode.com	01284 787707	Holy Innocents Church Revd Ben Edwards revdbenjaminedwards@gmail.com admichurch64@gmail.com	07522 396397
Benedictine Sisters of Our Lady of Grace & Compassion montana.gtbarton@btconnect.com www.montanacarehome.com	01284 787321	Mothers Union Linda Scoles Gill Flower	01359 230392 01359 231718
Church Institute Bookings Linda Scoles Lindascoles@uwclub.net	01359 230392	Pathways Pre-School Julie Goodwin www.greatbartonpathways.co.uk	01284 788258
Circle Dancing jenlerner@gmail.com Fb: West Suffolk Circle dance	07896 495574	Scout Group Jonathan Corwin gsl@gtbartonscouts.co.uk www.gtbartonscouts.co.uk	07764 815763
Freedom Church Leaders Mike and Lizi Long hello@freedomchurch.org.uk www.freedomchurch.org.uk	01284 788032	Second Chance Stroke Club Peter Marsh Peter.marsh@stroke.org.uk www.secondchancestrokeclub.co.uk	07884 125757
Great Barton Allotment Association gballotments@gmail.com www.gballotments.org		Women's Institute greatbartonwi@gmail.com www.thewi.org.uk	01284 788431
Great Barton Community Woodland Martin Jackson	07970 118658	West Suffolk Dog Training Society Sarah Connell	01284 767050
Great Barton Computer Club Secretary.gbcc@outlook.com www.gbcc.onesuffolk.net			
Great Barton Luncheon Club Cindy Morgan cynthiamorgan249@btinternet.com	01284 788487		
Great Barton Thanksgiving Fund (Village Hall Management Committee) Peter Fisk	01359 231382		
Great Barton Village Hall Bookings Diana Silverstone Diana.74@hotmail.co.uk www.greatbartonvh.onesuffolk.net	01359 352357		
Great Barton Primary Academy Claire Ratley	01284 787353		

Louise's Hairdressing

By Appointment Only

- Cutting
- Colour
- Foils
- Treatments
- Styling
- Perming

Call / Msg for Bookings

Louise: 07765 383739

Location: Tollgate House, Brand Rd, Gt Barton.
(Opposite the Bunbury Arms)

Volunteers Needed at Second Chance Stroke Support Group



Could you spare a few Tuesday mornings during term times to make a real difference in someone's life? Second Chance provides vital support, social activities and gentle rehabilitation exercises for stroke survivors - and we need your help.

What You'll Do

- Serve tea, coffee and refreshments
- Lead or assist with creative and physical activities
- Offer a friendly ear and warm encouragement

When and Where

We meet every other Tuesday morning in Great Barton, Suffolk.

Why Join Us

- Gain rewarding experience helping stroke survivors rebuild confidence
- Become part of a caring, supportive team
- Learn new skills in event support and activity leadership

Get Involved

Visit www.secondchancestrokeclub.co.uk to learn more, or get in touch directly with our secretary:

Elaine Berry elaine.berry@stroke.org.uk 07920 426 484



Every five minutes, **stroke** destroys lives.
Help us rebuild them.



ELITE FENCING & LANDSCAPING

All types of fencing erected.

Patios, Bases, Turfing, Decking.

Paths, Hard surface pressure washing.

All outdoor work undertaken.

Home 01359 221128, Mobile 07761 651567

Trevor@elite-fencing.co.uk

www.elite-fencing.co.uk



Yoga at Great Barton Village Hall

Mondays 7-8pm

Relaxed, friendly, fun - great for beginners!

Come along for a gentle stretch and relaxation - the perfect start to your week
Mats & equipment provided - just bring yourself in clothes you can stretch in

Book online @Yogawellsuffolk.co.uk



Email me @ yogawell.suffolk@gmail.com to find out more.

RH

Small garden machinery service and repairs

- Strimmers
- Lawnmowers
- Chainsaws
- Hedge Cutters
- Leaf blowers
- and more



Can collect and deliver locally around the Bury St Edmunds area.



For more information call

07823 884890

Hathaway & Co.

Tailored Men's Grooming Studio

Hathaway & Co is a professional male grooming studio based in Timworth.

We offer a tailored experience designed to meet all your grooming needs, including cutting, shaving, waxing, colouring, perming and much more.

While at our studio, grab a coffee, chill out, while we take care of the rest.

Over 65's receives 20% off on Thursdays!

Find us at:

Unit 34-35 Barns and Stables, Timworth,
Bury St Edmunds, IP31 1HS

Free Parking Available



20% off
your first
visit

01284 615083

Book online at hathawayco.co.uk

QUOVE ACCOUNTING

Creative **Accounting.**
Dynamic **Accounting.**
Efficient **Accounting.**
Innovative **Accounting.**
Positive **Accounting.**

Contact us

hello@quove.co.uk
01284 845120
quove.co.uk

3 Brickfields
Business Park,
Woolpit

Flexible Accounting.

For business
and personal
accounting
solutions.



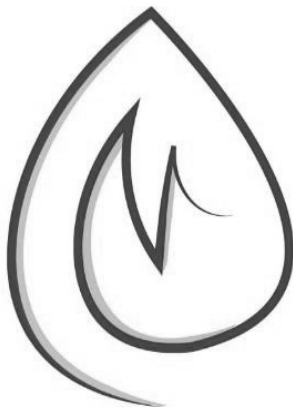
West Suffolk Chimney Services

Your local sweep
All types of chimneys swept

Open fires	Member of the Guild of Master Chimney Sweeps
Woodburners	Traditional and Power sweeping
Multi-fuel stoves	Fully insured
Boiler flues	Insurance-recognised certificates with every job
Agas and ranges	Cowls and birdguards supplied and fitted
Inglenooks (additional charge)	CCTV camera inspection available

£65 for a standard sweep

Contact Ian Rice
01284 787238 or 07841 390292



JK MAYES

PLUMBING AND HEATING LTD



- For all of your Plumbing & Heating requirements
- Oil, Gas & LPG boiler servicing, maintenance and replacements
- Vented & Unvented hot water cylinders
- Full bathroom renovation, from design to completion
- Air source heat pumps fitted (BUS grant available)
- All small maintenance jobs undertaken
- New Builds
- Excellent contacts to other trades
- Fully Insured
- Based in Great Barton

01284 787682 07825 325584 j.mayes23@btinternet.com

GADD BROTHERS

TREES AND LANDSCAPES

TREE WORK & ARBORICULTURAL SERVICES

Qualified and insured professionals undertaking all aspects of tree work, from dismantling mature dangerous trees to pruning and planting.



WOOD FARM

KILN DRIED FIREWOOD

Locally sourced hardwood timber from sites with felling licences to ensure sustainability. All logs are Kiln dried on site, 'Ready to Burn' certified with a moisture content of below 20%, to ensure clean and efficient burning.

01284 788794 • info@gaddbrothers.co.uk • gaddbrothers.co.uk

Wood Farm, Brand Road, Great Barton IP31 2NY

FootWise

Foot Health Care

Every **MONDAY & WEDNESDAY**
at The School Room Clinic
Methodist Chapel, High Street, Ixworth

TREATMENTS INCLUDE

Nail Trimming | Thick Nail Reduction
Ingrown Nails | Hard Skin Removal
Cracked Heels | Corn Removal

Diabetic Foot Care | Nail Reconstruction

**BOOK YOUR CLINIC APPOINTMENT
OR HOME VISIT**

Call Camellia Dighe Dip MFHP, Dip DM
Foot Health Practitioner

Tel: 01359 230 428
Mob: 07799664684
E-Mail: FootWise@Protonmail.com



Ear We Go

Mobile Ear Wax Removal

Microsuction & Irrigation

My name is Georgie
Please call, text or email for
an appointment

07921550958

Earwegol2@gmail.com
Fully Insured & DBS



BUILDING & PROJECT
MANAGEMENT

We provide our customers with a high-quality service with experience in projects from small to large, including:

Assistance at planning stage

New Builds

Extensions

Renovations

Paving & Landscaping

We are happy to provide our services for any element of your project!



www.cpeckbuilders.co.uk



07495 023954



cpeckbuild

RIBA Suffolk

Craftmanship Award Winner



Slippery Path / Decking?

Dirty Driveway / Patio?

Specialists in cleaning:

- Patios
- Paths
- Driveways
- Walls
- Fences
- Decking

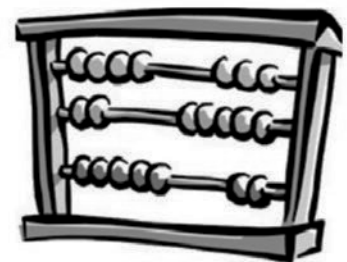
Call Jeremy for a free,
no obligation quote

07834 602929

jeremycooksley@gmail.com

TWINN ACCOUNTANTS LTD

We offer an efficient and professional accountancy service at a very competitive rate.



- ✓ Accounts and tax returns for Sole Traders, Partnerships and Limited Companies.
- ✓ Self-Assessment
- ✓ VAT returns including MTD
- ✓ Payroll Services

- ✓ Construction Industry Scheme
- ✓ Bookkeeping and Management Accounts
- ✓ Tax Planning
- ✓ Company Secretarial Services
- ✓ Training on Xero and QuickBooks

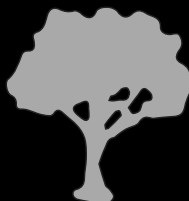
Tel: 01284 787616

Email: info@twinnaccountants.co.uk

www.twinnaccountants.co.uk

Suite 4, East Barton Barns, Great Barton, IP31 2QY

All accountants are not the same...we promise!



**Leon Brown Arb-Agri
Contracting LTD**
Tree Surgery Services

Dead Wooding & Crown Lifting

Chipping

Woodland Management

Crown Reductions

Hedge Cutting

Felling & Dismantling

Site Clearance Works

Fire Wood

General Ground Maintenance

Tel: 01284 391559 Mobile: 07552393830
Leonbrown.28@hotmail.co.uk

**B | BURROUGHS
ELECTRICAL**

Mob: 07921 235 603

Email:

luke@burroughselectrical.co.uk



@Burroughselectrical



Instagram

burroughs_electrical

http://Burroughselectrical.co.uk

Call Now for a Free Estimate!



**HOME AND PROPERTY
IMPROVEMENT**

All types of interior and exterior work undertaken by a qualified, experienced local tradesman.

Carpentry; wall and floor tiling; renovation work; painting & decorating inside and out; built in wardrobes; shed re-roofing; fencing; gates; patios; small brickwork and re-pointing to name but a few.....

Have all those jobs you've been wanting to have done for ages, carried out under one roof!!

For a free quote and advice call or email:

John Ranson

01284 788248 07770932799

j.w.ransonbuilding@gmail.com

For a personal and trustworthy service, fully insured, and guaranteed quality work.

Over 20 years' experience, C & G qualified. Portfolio of photos available on request and references available.

Dog Groomer in Great Barton

- Full Groom
- Bath & tidy
- Nail trims
- Puppy grooms
- brush appointments



Call or message on 07794 945739
Find me on Facebook – Fly Aways

GREAT BARTON LAWN SCARIFYING SERVICE

**Please call Jeremy for a
no obligation free quote.**

07834602929

jeremycooksley@gmail.com

Circle Dancing

Gentle (mostly!) dances to world music

2nd and 4th Wednesdays

Village hall 2.30-3.30

£6/session

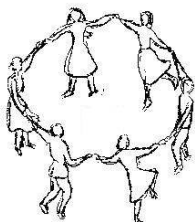
No partner needed

Contact www.jenlerner.com

07896 495574

jenlerner@gmail.com

Fb: West Suffolk Circle dance



JJB Garden & Maintenance

Garden Maintenance Clearance
Handyman Odd Jobs Gutter Clearance

A friendly and reliable service - Here to help!

Contact Jazz

Phone 07403 062652

Email: jjbgardenssuffolk@gmail.com

Find me on Facebook: JJB Garden & Maintenance

MATHS TUTOR

Based on the outskirts of Gt Barton

Does your child need a little extra help
with their learning?

Does your child have their SATS coming
up or maybe need some Year 7 catch up?

I have been tutoring local children for
a number of years and can provide
references from Great Barton families

Please contact Dawn:

07887359610

dawn.canham1@btinternet.com

[https://www.facebook.com/
CKchildcareandtutoring/](https://www.facebook.com/CKchildcareandtutoring/)

Happy Pilates

Pilates Classes

***Mat Classes, Reformer and
Chair Classes in and around
Bury St Edmunds.***

Monday 9.30am and 6pm

Tuesday and Thursday 9.30am

**Hazelwood Dance Studios
Hollow Road**

**Call or message Sabina on
07503 753121**

sabinasandy@hotmail.co.uk

Anglim Health

Private GP Surgery in Bury St Edmunds



Anglim Health are a fully equipped modern surgery with parking, conveniently located in Fornham All Saints.

At the heart of Anglim Health is Dr Anglim. He is passionate about providing a personalised and dedicated service to his patients.

Anglim Health offers regular or one-off appointments, there is no need to register first. Most importantly, appointments are face to face with a GP at a time that is convenient to you.

Anglim Health works alongside your NHS GP to ensure that you have the best healthcare options available to you.



Urgent and Flexible Appointments

Appointments available quickly, including early, late and weekends.



A Personal Relationship

A personal, private GP takes time to fully understand your circumstances.



High Quality Care

We provide the highest quality care and can offer treatments and tests not routinely provided by the NHS.

01284 245665

www.anglimhealth.co.uk



Larkbridge Mortgages - Whole of Market Mortgage Specialists

Right on your Doorstep...

- Large Loan Mortgage Specialists
- Remortgage Advice when coming to the end of your deal.
- Home Renovation Lending Advice
- Experts on Self-Employed Mortgages
- Self-Build & Development Mortgages
- Equity Release and Later Life Lending Guidance
- Additional Borrowing for Extensions & Home Renovations
- Investment Finance, including Buy to Let, Bridging & Holiday Lets
- Limited Company BTL Mortgage Advice
- First Time Buyers & New Builds
- Life Insurance and Income Protection Specialists
- Business & Self-Employed Protection Experts
- Video Appointments and Face-Face Meetings Available

Initial consultations are always free

Call us on:

01284 729250

Email us at:

advice@larkbridge.co.uk



www.larkbridge.co.uk