

Great Barton Newsletter

Summer Edition 2023



Editorial



In this Issue

- ⇒ Editorial page 2
- ⇒ News from Community Groups 3-8
- ⇒ Round the Village and the emergency operation team phone numbers 9-10
- ⇒ Report from the Chair of the PC 11-12
- ⇒ Parish Council information 12-16
- ⇒ Church Information 17-19
- ⇒ Family Quiz 20
- ⇒ Village Directory page 21
- ⇒ Advertisements pages 22-28
- ⇒ Answers to Quiz 27

Distribution:

Tracey Butt c/o 01284 787386

Please contact Tracey if you are willing to help distribute the newsletter

This newsletter and the previous editions can also be viewed in full colour online on the Village Website as a "Flipbook"

greatbarton.suffolk.cloud

Please send articles at any time to
editorgbpcnewsletter@gmail.com

"Summer is a comin' in" as the old mediaeval song begins, so we hope that you are managing to keep as cool as possible during spells of hot weather. It seems obvious that the climate is changing, but hopefully there is a plenty of shade in your village gardens, thanks to our wonderful trees here in Great Barton! Talking of gardens do have a look at the West Suffolk Horticultural article, regarding entering their show in November.

This edition sadly has less articles than normal from the community groups. If you are running a village society or organisation of any kind, it is a great free way to advertise what you are doing and encourage new members. A printed copy is delivered to approximately 900 houses in the village. It is also uploaded onto the Great Barton village website, so will gain further interest from people beyond the village too.

So please note now **the deadline of 10th September** for the next edition, and send in your contributions and events for winter 2023 as soon as possible, so we can let Great Barton residents know about all the wonderful Christmas events being organised.

I am hoping to add a readers' questions page in the next edition, so if you have any questions about Great Barton you would like to submit, please do so. There will also be an opportunity to submit photos for selection for the front cover.

I look forward to receiving your articles!

Thank you!

Jan Butler Editor

Published by: Great Barton Parish Council

Photography copyright: ©GBPC

Front cover photographs produced with permission

Great Barton Film Night



Dates in 2023

Saturday 16th September

Allelujah

2022 Cert 12

Saturday 21st October

A Man called Otto

2022 Cert 15

Saturday 18th November

The Notebook

2004
Cert 12A

Public admission £4.00

Doors open 7.00pm

Children (under 16) £2.00

Film Show starts 7.30pm

GBFN.OneSuffolk.net

Tea, coffee and Ice-creams available.
These shows are open to anyone and everyone
–just turn up and pay on the door
or to reserve tickets call:
Maggie Redshaw 01284 788397

West Suffolk Horticulture Society

We will be holding our annual flower and vegetable show at Great Barton Village Hall on Friday 10th November from 1.30pm to 4.30pm.

Refreshments will be available and there will be a tombola.

There will be a spectacular display of chrysanthemums and a variety of other classes including pot plants, floral art, fruit, vegetables, cookery, photography and homemade wine and spirits.



The society is open to receiving other ideas for new activities, and visitors to the show will be made very welcome.

The Classes will be :

Vegetables Including: potatoes, tomatoes, beetroot, cauliflowers, onions, cabbages, carrots, sprouts, parsnips, leeks and celery.

Cookery including : sponge cake, cheese or fruit scones, fruit cake, mince pies, shortbread, a jar of jam or marmalade and a jar of chutney.

Floral art A Royal celebration, flowers of one colour, 5 blooms, a basket and an all foliage arrangement.

Photography Including: bridges, industrial landscape, reflection, pretty pink and boats.

If you want to enter our show schedules can be downloaded from the society's website.

wshs.webnode.co.uk or obtained from the show secretary David Page on 07860240895, or email dpage@gmail.com

To enter the show and to be eligible for a special award, you must be a member of the society

which is only £3 a year.

Come along to the West Suffolk Horticultural Society's Flower & Vegetable Show

Friday 10th November 2023
at
The Village Hall, Gt. Barton
Nr. Bury St Edmunds, IP31 2NR



Beautiful Blooms
Floral Art, Wine, Fruit & vegetables, Cookery,
Newcomers & Allotments Holders.

Tombola and Refreshments
Admission £1 – children free

******FREE PARKING******

Open Friday 1.30pm – 4.30pm
Everybody welcome!

Visit our website – wshs.webnode.co.uk

West Suffolk Horticultural Society – an enduring fellowship

News from the Community

Sponsored Walk for prostate cancer



My name is David Rapley and I am writing this article for the Great Barton News Letter to highlight prostate cancer and inform you about a challenge I have set myself.

I am 59 years old and have been a Postman for 40 Years. I am one of the Great Barton Postmen so you may know me. I am also a Level 2 Football coach and sport is my passion.

I have been recently diagnosed with Lower Level Prostate Cancer. A lot of men don't know they have this as us men don't tend to go to the doctors. There is a simple blood test that can be taken to see if your PSA levels are up and if they are its best to get it checked out, as it could save your life.

Therefore I am doing the Prostate Sponsored Walk in memory of Bill Turnbull, who recently passed away with Prostate Cancer.

The Walk is from Wembley Stadium to Wycombe Wanderers Football Stadium, which Bill supported. Jeff Stelling of Sky Sports News is the lead man on this Walk.

I have a "Just Giving" Fund Raising page so just put in *David Rapley* and go to Prostate Walk for Bill Turnbull. It would be very much appreciated if I could raise some money for this worthwhile cause. Alternatively, you can click on the link below if you are viewing this article online.

[david rapley is fundraising for PROSTATE CANCER UK \(justgiving.com\)](https://www.justgiving.com/david-rapley)

Thank You for your support

Kind Regards, David Rapley.

Great Barton History Society

The History Society meets In January, March, May, September and November on the first Tuesday of these months. We have a list of very interesting speakers lined up already for 2023. We meet in the Great Barton Village Hall Annex at 2.30pm. If you would like to come and visit us you would be very welcome, either with a view to joining us as a member for £10.00 per year, or as a guest. We usually charge guests £3.00 per visit. There is a list of our up-and-coming speakers pinned on the Village Hall notice board.

On **September 5th** our speaker will be Dr Sutton, who will speak to us on the subject of **Revel Riots & Rebellion in Bury St Edmunds**.

The **November 7th** speaker will be the Rev. Tony Redman and he will be speaking about **Building Stone in Suffolk**. This meeting will be preceded by a very short AGM.

As you will probably have noticed we are trying to keep our subjects local to Bury St Edmunds and Suffolk this year.

We usually try to arrange an outing in the early Summer and this year in May, as well as our scheduled speaker on May 2nd, on May 24th we went to visit Pakenham Water Mill. 21 members went on the visit and as well as a very interesting guided tour by extremely knowledgeable volunteers, we had a delicious homemade afternoon tea. It was a beautiful, warm, sunny afternoon and was enjoyed by all who took part.

If you think you would be interested in visiting us or even joining the Club, please come along to one of our meetings.

Jane Bream. Secretary.

Contact Details. Email: -

J.bream711@btinternet.com

Tel:- 01284 702336. Mob:- 0794759562

News from the Community

Great Barton Computer Club

This is a Computer Club for everybody, from people who are new to computers, to those of more advanced knowledge. Everybody is welcome. We have Teaching Meetings and Work Shops, on two or more Mondays in the month.

These vary from Laptops, iPad and Mobile Phone sessions.



We also have a Drop – In session on the first Monday of the month for members to have one to one assistance.

Please feel free to come and visit us to see what we get up to and maybe, if you like what you see, even join the Club. We start at 2.00pm.

You can visit our web site at: - www.gbcc.onesuffolk.net or contact our secretary

secretary.gbcc@outlook.com



Large Box size

You could advertise your business here

£13.50 for each edition

Contact

infogbpc@gmail.com



**Great Barton Women's Institute
2023 Meetings**

Thursday July 6th “A Handsome Little Town : A Virtual Tour of BSE “- Adrian Tindall

Thursday August 3rd “A Dog Is For Life (Dogs Trust)” - Emily Matthews

Thursday September 7th Social Evening led by the members

Thursday October 5th OPEN MEETING.

“Where Does Malt Come From And What Can It Be” - George Irving Meeting open to all , all villagers are welcome

.....
Ladies, if you have recently moved to Great Barton and want to become part of the community and make new friends, have young children and would like to escape for an evening once a month, or have retired and want to keep active within the community, you might like to consider joining the Women's Institute (WI). This year Great Barton Women's Institute are celebrating their 90th Birthday and it would be a great time to get involved.

For further information please contact:
Sue Lawes (President) on 01284 788431

Our meetings are held on the first Thursday of every month in Great Barton Village Hall and the usual start time is 7.30.

There is an entrance fee of £4 for visitors which includes a raffle ticket and refreshments.

We look forward to welcoming you.

Info at: [Great Barton | Suffolk West \(thewi.org.uk\)](http://thewi.org.uk)

News from the Community

Great Barton Luncheon Club

We are a Luncheon Club which meets at Great Barton Village Hall on **the second Friday of each Month** (except in August) .

Members are welcomed with either a glass of sherry or fruit juice and served with a two course meal, followed by tea or coffee, at a cost of **£5.00 per person** (plus a very small yearly membership fee)

We are a very friendly and welcoming group. If you are 55 years or over and live in Great Barton and would like to join us, we would be delighted to hear from you, and put you on our waiting list.

Please contact:

Christine Johnson 01284 787687
Brenda Turner 01284 787654



Were you ever a Brownie or a Guide as a child? Do you remember the fun and friendship and activities you were able to enjoy thanks to your fantastic leaders?

We are looking for ladies who would be willing to help make those memories for our current girls, and become Leaders, so that we can open more Brownies and Guide Units.

We have more than 100 girls across North West Suffolk, who are waiting to become members but all our current groups are full to bursting.

So please give volunteering for Girlguiding some serious thought!

If you want further information about joining us, check out the Girlguiding website

[Get involved in girls' activities and our charity | Girlguiding](#)

Self employed and looking for somewhere to advertise your business?

Advertise your business here

Copies are delivered to 900 homes in Great Barton and we also

upload each newsletter on the Great Barton website

Contact the editor for more details, the prices are on page18

editorgbpcnewsletter@gmail.com



News from Community



Second Chance Stroke Club



Second Chance is a club and group meeting point for Stroke Survivors who are looking for an outlet to rehabilitate following a Stroke and meets in Great Barton Village Hall every Tuesday morning in term times.



A stroke is a serious life-threatening medical condition that happens when the blood supply to part of the brain is cut off. If you survive, the survivor can be affected in many different ways, from the obvious loss of limb use, (arms, Hands or ability to walk) speech impediments, emotional and behaviour changes, the onset off Vascular Dementia as well as extreme fatigue.

The Club was formed in 2010 and came about originally as an educational forum for stroke Survivors and Carers who were getting little or no help from the Health Community following discharge from hospital. As it is, there is still a long way to go to improve services for Stroke Survivors, unlike those who suffer from heart disease or Parkinson's etc.

It quickly grew in numbers and in 2012 moved to its current venue in Great Barton Village Hall. Its main aims today are to provide a service for Stroke Survivors who feel isolated in the community, and wish to improve their well-being.

Second Chance is an independently funded Voluntary Support Group under the umbrella of the National Stroke association, and rely on donations, Grants and fund raising to raise funds to support our activities, including providing transport for the less able to attend the Group on Tuesdays.



We are fortunate enough to have a hard core of regular volunteers to support members but can always do with more help as our membership grows.

Members are referred to us from the NHS, GP Surgeries, Occupational Therapists and Social Services.

(Regretfully we are unable to help survivors who suffer from Vascular dementia or similar as a result of their Stroke, but there are Stroke Association Groups that can assist.)

The group provides Social, cognitive and Emotional support as well as regular Physiotherapy from a dedicated Neurological Physiotherapist.

In addition to Physiotherapy, we have a full programme of events, including guest speakers, entertainment and some social activities details can be found on our web site.

New members are welcome, just give Peter Marsh a call on 07884125757.

Web site: www.secondchancestrokeclub.co.uk

Facebook page: www.facebook.com/secondchancestrokeclub

News from Community

Winter Gardening tips page will be coming next time.

Please submit your tips to the editor by 1st September 2023

editorgbpcnewsletter@gmail.com

Another defibrillator will soon be installed at the Freedom Church in Mill Road



How and when to use a defibrillator.

A defibrillator is a **device that gives a high energy electric shock to the heart of someone who is in cardiac arrest.** This high energy shock is called defibrillation, and it's an essential part in trying to save the life of someone who's in cardiac arrest.

If you ever need to use it you must call 999 and the operator will then tell you where the nearest defibrillator can be found. They will talk you through how to use it, including giving you the code to open the box.

We will then have two defibrillators in the village, one outside the Village Hall and this new one at the Freedom Church.

These are an important additions to the facilities in the Village.

Thank you to the Parish Council for organising this.

East Anglian Traditional Music Trust

On 2nd September we will be bringing East Anglian Traditional Music and Entertainment to the centre of Stowmarket. Expect Concerts, Workshops, Music Sessions, Talks, Exhibitions, Storytelling, Puppet Shows, Music related stalls and Step Dance. Morris Dancers will be setting the town ablaze with colourful costumes and performances along and around the High Street.

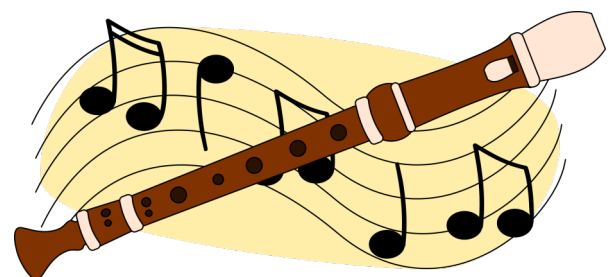
There is a choice of 18 exciting and interesting ticketed events. Tickets are on sale on EATMT website or from The John Peel Centre.

On Friday 1st September our first ticketed event is a ceilidh to the music of the Hosepipe Band in the John Peel Centre.

We are also offering Free Events. Throughout the day there will be opportunities to sing, play in music sessions, or just listen to local musicians. You may wish to "have a go" step dancing, working jig dolls, maybe even join in with the odd Morris dance, or take the chance to relax and enjoy watching and soaking up the atmosphere.

A full programme can be found on our website www.eatmt.org.uk

We are a registered charity. If you wish to email or speak to us details are info@eatmt.org.uk – 07495 054669



Alex Bartholomew

Round The Village



Village Hall Management Committee

If you would like to hire the hall please contact:

Diana Bilverstone:
diana.74@hotmail.co.uk
<http://greatbartonvh.onesuffolk.net/>

The Hall committee is always looking for people willing to help with hall management.

Bury St Edmunds Mobile Library Service

Route 1: Every 4 weeks on Tuesdays
 1C Oakampton House 10.00 -10.20
 1D School Road 10.25 - 10.50

Route 12: Every 4 weeks on Thursdays
 12D Brand Road 10.35 -10.45

[Mobile libraries | Suffolk Libraries](#)

Did you know that if you are a mobile library user you can have the books for 8 weeks rather than the usual 4? I discovered this by chance back in April!



Regular events in the Village Hall

<p>Mondays: Parish Council, Computer Club, Pilates, Wine Society</p>	<p>Tuesdays: Second Chance, History Society, Badminton, Dog Training U3A Photography</p>	<p>Wednesdays: Tadpole Tunes, Linnet Investment, Pilates</p>
<p>Thursdays: Pilates, WI</p>	<p>Fridays: U3A Patchwork, Luncheon Club</p>	<p>Saturdays: Coeliac Society, Guide Dogs Fundraisers, Film Night</p>
	<p>Sundays: Region 7, Tea Dances, Football</p>	<p>See page 19 <i>for a full list of contact details</i></p>

Round The Village

Editor's conundrum

Which kinds of plants do Muntjac hate eating!

Answer next month!

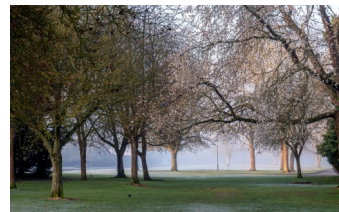


Have you taken a local photo which would look good on the front cover of the Winter edition of the Great Barton newsletter?

Please submit your photos initially as small images to the editor by 1st September The parish Council will make the final decision.

editorgbpcnewsletter@gmail.com

If chosen you will need to provide a copy of the original image.



**Great Barton Emergency Operations Team
Mobile and Landline Numbers**

John Roe	07845 529 923	01284 787 749
David Murray	07825 172 446	01284788606
Gemma Reid	07407 714 372	01284 788 439
Josh Pirt	07961 863 866	001359 231 011
Simon Stockdale	07572 037 615	n/a
Eddie Gibson	07484 602 289	01284 788 384
Nicola Crouch	07739 852 714	01284 788 611
Maggie Dunn	07977 875 882	01284 787 357

Parish Council Report from the Chair

I can't believe where the year has gone, it doesn't seem long since Christmas, there has been a lot going on in the village since I last wrote to you.

The Parish Council are still working on your behalf around the village. Following the election, the Parish Council has three vacancies that need to be filled. It may look from the outside that we are slow or not doing somethings, but we only have six Councillors, and we are all volunteers, and some have full time jobs as well. So that means that we do what we can when we can, so I ask for your patience.

If you are interested in becoming a councillor please contact me or Amanda the new Parish Clerk. On the subject of the clerk **Amanda Jackson** has joined us and is a welcome addition to the team. You can contact her by email at infogbpc@gmail.com or on **07596 868600** which is the parish clerk phone number,.

We celebrated the King's Coronation at the beginning of May. There were events across the weekend, on Friday evening there was a Fish and Chip Supper organised by Holy Innocents Church, on Saturday the WI organised a Great Coffee Morning whilst we watched the actual Coronation, and on the Sunday there was a Picnic in the Village Hall, and finally on the Tuesday the School opened their Coronation Garden that has a formal area and a wild flower meadow and was enjoyed by members of the Village. The Parish Council has bought two small apple trees for the school as the children are growing fruit and veg in the school.

I want to say thank you to all those who organised the events, you make the village what it is, by giving your time and efforts to bring us together. It was great to see lots of organisations pulling together across the village. It is a great example of what puts the GREAT into Great Barton!

The Parish Council are still involved in the consultation of The Triangle and the proposed building on there.

Thank you to Philip Reeve and Vivien Bodnar for the work they have done on this as they were instrumental in the Neighbourhood Plan and how that affects the Development. We will keep the village updated as things progress, but I don't see it as being quick.

The **Severals' Development** on the A143 by the railway bridge was granted permission after the Planning Enquiry. It was a long response and I have put it into a more understandable format in the next pages. I haven't heard anymore about when they will put phase one before the planning at West Suffolk.

We have replaced two of the benches on the Playing Field and they are now made of recycled material from 740 plastic milk bottles and they are hardwearing. We are having the other benches on the playing field refurbished so they should all look good..

We are in the process of replacing the village noticeboard in Livermere Road and also there will be one at the Village Hall to replace the one that was at the Post Office,

The council are aware of the junction problems with long grass growing and I will be raising this with Suffolk County Council as it is a road safety hazard. I am aware that people are doing some cutting back, this is not something that the Parish Council can condone, as it is dangerous, especially the speed some cars are doing

We still have a speeding problem in the village, the Speed Watch Team have been out in force and are collating the information they have accumulated. Letters will be sent to those doing over 30mph. We are also getting quotes for verge gates so people know they are entering the

Parish Council Report from the Chair and Parish Council Information

village and hopefully slow them down.

As we go into summer and the hotter weather please bear in mind that if you are in the back garden make sure your front doors and windows are shut and locked. At nights make sure the ground floor windows are shut securely we do not want to give the opportunist thief any opportunities at all. I know if it is hot we want air through the house but there is a risk!! Please make sure you lock away your garden tools as they can be used to break into your home also don't leave lawn mowers out as they are expensive pieces of kit and easily portable, you wouldn't leave your television outside unattended!

Maggie's Moans.

It has come to the Parish Council's attention that villagers are collecting dog poo from their own gardens and depositing carrier bags full in the council provided dog bins. The dog bins are for dog walkers to deposit dog poo whilst on a walk. The dog poo from the garden should be placed in your black bin for collection. The black bin is emptied as part of your Council Tax but the Parish Council have to pay for emptying the dog poo bins. Last year that came to nearly £1,500 for the year, if we have to put in more collections it will cost us more and we will have less money for other projects.

When you clear your garden and/or allotment please do not just dump the waste over the hedge or on field boundaries, it makes a mess and also entices other people to come and dump rubbish, on top. If it is garden waste it can be put in your brown bin if you have one or taken to the waste hub if you don't. As a last resort it can be put into your black bin. You could try composting it and use it in your garden, it isn't easy, I'm useless at it.

Please have a great summer! *Maggie*

Extract from the Planning Enquiry into the Severals' Development

The decision from the enquiry ran to 64 pages. I have tried to put together some of the main changes the village can expect to get from the development. As with all developments a lot is dependant on the numbers of houses built so not everything will come the minute they start building.

The traffic operation of several road junctions, as well as works and facilities to improve pedestrian and cycle links to and from the site to the centre of Bury St Edmunds and consequently minimise growth of vehicular traffic on the local road network arising from the proposed development. Indicated in the list below are financial contributions secured as obligations in the S106 and works and facilities which will be secured through the indicated Grampian-style planning conditions. This refers back to conditions that are imposed as part of a planning decision and have to be adhered to by the developer even when these are off the site of the development.

These are as follows:

- Public Right of Way (PRoW) Contribution of £187,8002 - defined in the S106 as Highways (destination A) Contribution – to create a field edge bridleway from the northern end of bridleway BR6 to the new cycle path at Bury St Edmunds Recycling Centre adjacent to Fornham Business Park on Fornham Road.
- PRoW Contribution of £25,350 – defined in the S106 as Footpath 21 Contribution – to upgrade existing public Footpath 21 to a public bridleway, divert it to the field end and extend it south eastwards to East Barton Road
- Offsite Walking and Cycling Contribution of £695,000 – defined in the S106 as Highways (destination C) Contribution – from the site at Barton Road to the town centre to include pedestrian and cycle path improvements to Eastgate Street, Mustow Street and

- Highways (mitigation) Contribution of £1,788,758 – defined in the S106 as such – that will enable improvements to the highway network in the Bury St Edmunds Area. This definition would allow the expenditure of this contribution by the LHA to combine walking and cycling improvements with or instead of junction and carriageway improvements to improve vehicular traffic flows. At its discretion.
- Speed Management Contribution of £15,000 – defined in the S106 Highways (A143 TRO) Contribution – towards bringing forward a Traffic Regulation Order to secure a speed limit reduction on the A143 along the accesses to the site
- Construction of the southern roundabout to the Site prior to occupation of the 150th dwelling – secured by Condition 58 in the Schedule of Conditions below
- Construction of the northern roundabout to the Site (adjacent to the Phase 1 detailed scheme) prior to first occupation of any of the dwellings .
- Construction of footbridge over the Cattishall rail crossing prior to no more than 500 dwellings being occupied including no more than 30 dwellings in Phase 2 .
- The southern access (roundabout) shall not be brought into use until the traffic signal update scheme (MOVA) including the toucan crossing at Orttewell Road and the cycle link to the Orttewell Road crossing shall have been completed .
- Submit a suitable scheme for the upgrade of the surface of Green Lane (Byway RB4) prior to first occupation of Phase 1, complete the Byway RB4 crossing of the A143 prior to occupation of the 150th dwelling and the spine road crossing within the scheme prior to occupation of the 288th dwelling .

- Upgrading of the BR5 bridleway along the north side of the A143 including the A143 crossing prior to occupation of the 287th dwelling.
- Re-surfacing bridleway BR6 with hoggin or Breedon Gravel from the junction of Fornham Road southwards to 300 metres prior to occupation of the 287th dwelling.
- Details of the works to be undertaken to re-open the railway underpass between the Site and Moreton Hall estate to be submitted and approved prior to commencement.
- A scheme for an enhanced right hand turn off the A143 onto Fornham Road in Great Barton to be submitted and approved prior to first occupation of development, such scheme to be carried out prior to occupation of the 288th dwelling.
- Completion of walking and cycling link from the northeast corner of the Site to Great Barton including a new crossing on the A143 to be completed in full and made available for public use prior to occupation of 287th dwelling.
- The agreed works to the Compiegne Way approach to the Northgate roundabout shall be completed and made available for use prior to occupation of the 500th dwelling.
- A scheme for the traffic calming and associated measures on East Barton Road shall be submitted, agreed and completed prior to first occupation of the 500th dwelling.
- A scheme showing two lane segregation by means of hatching on the A143(S) approach to the A143/A134 roundabout shall be submitted, agreed and completed prior to occupation of the 150th dwelling.
- A signage strategy for pedestrians and cyclist including a timetable for its implementation to be submitted and agreed prior to first occupation of Phase 1, to be carried out and retained thereafter.
- Travel plans relating to respectively the non-residential, residential and primary school/early years facility shall be submitted to LPA approval prior to first occupation of these elements of the scheme.

Information from the Parish Council

- Details of a shuttle bus service to/from the site to the town centre to be submitted and approved prior to occupation of the development, such service to be delivered before first occupation of the 50th dwelling .

Various financial contributions to public open space and set out in the S106:

Towards outdoor sports pitches with Bury St Edmunds including provision of a synthetic pitch at Victory Ground (£73,270); towards outdoor sports facilities, in particular sports pitches at Victory Ground (£831,600); towards sports halls in the town (£271,557); and towards providing swimming pools within the town (£113,157). These, which together total £1,289,584 towards public open space, have all now been agreed between West Suffolk Council and the appellant.

The appellant has now agreed to pay Suffolk County Councils full requested library contribution of £297,000, which would allow it to essentially refurbish and upgrade the central library in the town centre.

The S106 also provides for considerable additional infrastructure, none of which was disputed at the start of the Inquiry. This includes: An early years on site contribution of £1,845,720 to provide for an early years facility.

- 1) An early year off site contribution of £241,752 if necessary.
- 2) The transfer of a suitably unencumbered site of a minimum of 2.06ha within the site to Suffolk County Council for primary school and early years facility for the sum of £1.
- 3) A primary school contribution of £6,808,656 to allow the construction of a 2-form entry
- 4) 420-place primary school for children aged 5-11.
- 5) A secondary school contribution of £5,610,900 to allow the expansion of secondary schools in the town.
- 6) A sixth form contribution of £1,117,425 to allow the expansion of sixth forms in town.
- 7) A temporary classroom contribution of

£250,000 to be used to provide temporary classrooms during the construction of the proposed development.

- 8) An NHS contribution towards local health facilities of £739,000.
- 9) A travel plan contribution of £1,000 to enable monitoring of the travel plans.

I hope this gives you some incite into this , but if you need further information you can go onto the West Suffolk Website and go to comment on planning applications and go to appeals Land North East Of Bury St Edmunds Bury Road Great Barton Suffolk

Ref. No: AP/22/0031/STAND | Received: Fri 27y 2022 | Status: Appeal Allowed.

Maggie

A Reader's Questions page will be coming in the next edition. Submit your questions about Great Barton to the editor, by 1st September 2023. Questions will be used at the discretion of the Parish Council .

The next edition of this newsletter will cover October /November and December

Deadline for submissions

10th September 2023

Parish Council News



What Matters to you in your local area?

Is it the state of the local park, the need for more activities for young people, making the roads safer, improving the local environment, local development needs?

Whatever needs changing in your neighbourhood, you could be just the person to change it by becoming a local councillor.

No other role gives you a chance to make such a huge difference to the quality of life for your local community.

Could I be a Councillor?

The easy answer is 'almost definitely' as long as you are:

- British or a citizen of the Commonwealth
- At least 18 years old
- Registered to vote in the area or have lived, worked or owned property here for at least 12 months before an election

Being a Councillor

Being an effective councillor requires both time, commitment and hard work. You need to balance the needs and interests of residents within the local government framework.

Before you consider becoming a councillor you may want to discuss it with your family and friends to make sure they understand what you are taking on.

**If you are interested in making a difference, please contact
Maggie Dunn :**

Tel : 01284 787357

or email

maggiedunn736@gmail.com

Parish Council Meeting

The full agenda for each meeting will be posted on the village noticeboards three days in advance.

Dates of the next meetings are:

Parish Council August 21st
September 18th
October 16th

Planning Meetings August 14th
September 11th
October 9th

They can also be found on the village website:

<http://greatbarton.suffolk.cloud/parish-council/meeting-dates/>

Ideas for Future editions of the Parish Council Newsletter

- Readers questions for the Parish Council
- Submit your village photos to the editor for possible use as the front cover and throughout the newsletter.
- Gardening hints and tips for the winter
- Recipes for Christmas gatherings
- Articles and Photographs of the village in the past



If you have an idea which would be of interest to the readers please let us know.

editorgbpcnewsletter@gmail.com

Parish Council Information

Parish Councillors

Chairman: Maggie Dunn 01284 787357

Councillors:

Matthew Parker 01284 788307

- ⇒ **Peter Fisk 01359 231382**
- ⇒ **David Clarke 01284 788730**
- ⇒ **Andy Baker 01359 352088**
- ⇒ **Gwyn James 01284 788759**

Clerk to the Council Amanda Jackson 07596 868600 infogbpc@gmail.com

(The Parish Council currently has three vacancies)

<http://www.greatbarton.onesuffolk.net/parish-council/minutes>

Local Councillor Contact Information

Borough Councillor:

Mrs. S Broughton

Manor House, Church Road,
Great Barton, IP31 2QR

Tel: 01284 787327 **Email:**

sarah.broughton@stedsbc.gov.uk

Borough Councillor

Mrs. R Hopfensperger

17 Risbygate Street, Bury St Edmunds, IP33 3AA

Tel: 07876 683516 **Email:**

rebecca.hopfensperger@suffolk.gov.uk

County Councillor:

Mrs. R Hopfensperger

17 Risbygate Street, Bury St Edmunds, IP33 3AA

Tel: 07876 683516 **Email:**

rebecca.hopfensperger@suffolk.gov.uk

Member of Parliament:

Rt Hon Jo Churchill MP

10 Hatter Street, Bury St Edmunds, IP33 1LZ

Tel: 01284 752311

Great Barton Parish Council

www.greatbarton.onesuffolk.net

PARISH COUNCIL MEETINGS are held at the Community Room in the Village Hall, commencing at 7.30pm.

Public Sessions are available for Parishioners to raise matters in which they are interested.

Notice of all Parish Council Meetings and any other important Parish Council information is posted regularly on the Parish Council notice boards:

- **by the Thurston Road mailbox,**
- **at the Mill Road/Livermere Road crossroads,**
- **outside the Primary School on School Road and on the website.**

Copies of the minutes of meetings of Great Barton Parish Council are available on the Village website.

If you would like to receive **updates on the activities of the Parish Council**, please email the **Chair**

Maggie Dunn : maggiedunn736@gmail.com

Bus Routes in Great Barton

**338 - Bury St Edmunds - Walsham-le-Willows -
Market Weston - Diss**

**304 - Bury St Edmunds - Great Barton - Ixworth -
Stanton - Wortham - Diss**

304 - Bury St Edmunds - Stanton - Diss

338 - Bury St Edmunds - Stanton - Garboldisham

**2 - Southolt - Kenton - Westthorpe - Bury St
Edmunds**

**300 - Bury St. Edmunds - Pakenham - Ixworth -
Ixworth Thorpe**

Website: [Buses in Great Barton - View Bus Services and Stops \(geopunk.co.uk\)](http://Buses in Great Barton - View Bus Services and Stops (geopunk.co.uk))

Church Information

**THE MEETING POINT
COMMUNITY CAFÉ**

At The Church Institute,
The Street,
Great Barton

OPENING TIME
EVERY WEDNESDAY, 11.00AM – 1.30PM

All Welcome!
A Great place to meet up with friends for lunch or to relax and enjoy a Tea or Coffee with a slice of Cake.

Come and join us for
FREE Tea and Coffee.
* * * * *
We also serve
Homemade Cakes,
freshly prepared lunches
to order.

Baked.



Coronation Fish and Chip Supper

The evening was a great success. The Village Hall was beautifully decorated for the Coronation Weekend. 76 people enjoyed the Fish, Chicken, Sausages and Chips prepared and delivered piping hot by Peyton Plaice.

Quizzes and puzzles set by Annie Wallace and Tim Frost, and colouring pictures provided by Hui-Imm Clarke were great fun. Conversation was the main entertainment, and no one was in a hurry to get away.

Special thanks go to the Parish Council for providing the funds for the coffee, tea, soft drinks, and the Ice Cream Sundaes;; Annie Wallace, whose idea sparked the event; Peter Turner, whose expertise and advice ensured that the evening ran smoothly; and to those who planned and manned the event:: Peter and Sarah Robinson, Betty Holdgate, Hui-Imm and David Clarke, Kathy Drakes, Peter and Brenda Turner, Jill Davey, Cindy, Annie Wallace, Alastair and Claire Mackichan.

And, of course, thanks to all of you who came and enjoyed
the Coronation Fish and Chip Supper with us.

Linda Scoles

Church Information

Montana Service Times

Montana on East Barton Road has a Roman Catholic mass at the following times:

Sunday 10.30 am

Weekdays (Mon - Fri) 8.15 am

**FREEDOM
CHURCH**



*A heart for the
community
A place where God
dwells*

<https://www.freedomchurch.org.uk>

Holy Innocents Church

www.greatbartonandthurston.org.uk

Our on-line magazine can be found on our website:

<http://themessengergtbarton.suffolk.cloud>

The Church Facebook pages:

Holy Innocents: <https://www.facebook.com/Holy-Innocents-Church-Great-Barton685807921585678/>

St Peter's:

<https://www.facebook.com/St-Peters-Church-Thurston-1790473917903849/>

Church Institute

The Church Institute is a lovely venue available for private and regular club bookings. It is also available for parties, celebrations, wedding receptions, funeral wakes and other general use.

For prices and enquiries please contact:

Linda Scoles 01359 230392 or

Reverend Ben Edwards at

revdbenjaminedwards@gmail.com

Church Officers

Vicar : Reverend Ben Edwards

Email: revdbenjaminedwards@gmail.com

Churchwardens:

Tim Frost 01284 787442

Angela Pearce 01359 230395

Verger:

Linda Scoles 01359 230392

PCC Secretary:

Jane Dalton 01284 788613

Treasurer:

Kathy Drakes 01284 787746



General Knowledge Quiz

Challenge your family and friends with this family General knowledge quiz submitted by Peter Marsh on behalf of Second chance Stroke Club, Thank you Peter!

1. 1-What was Meta Platforms Inc formerly known as?
 2.-Which English city is known as the Steel City?
 3-Which former British colony was given back to China in 1997?
 4-The logo for luxury car maker Porsche features which animal?
 5-Which element is said to keep bones strong?
 6-What does CIA stand for?
 7-Suriname is located on which continent?
 8-In tennis, what piece of fruit is found at the top of the men's Wimbledon trophy?
 9-Haematology is the study of what?
 10-What is the main ingredient in guacamole?

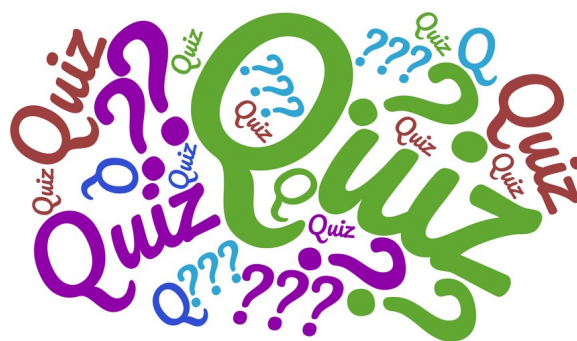
2. 11-Which body sets the interest rates in the UK?
 12- How many lives is a cat said to have?
 13-Randall Flag, Jack Torrance and John Coffey are all characters created by which author?
 14- Who founded the World Scouting Movement?
 15-In 2018, Scott Morrison was elected as the Prime Minister of which country?
 16.-What is a female elephant called?
 17-Franz Josef Strauss Airport is located in which country?
 18-Which religion is based on the spiritual teaching of Guru Nanak?
 19-On what date is Bastille Day celebrated in France?
 20-Which mountain overlooks Cape Town in South Africa?

3. 21-.Caledonia was the Roman name for which modern day country
 22-What brand of beer does Homer Simpson drink?
 23-Rojo is the Spanish word for which colour?
 24-How many time zones are there in mainland USA? Can you name them?
 25-What is the largest freshwater lake in the world by its area size?
 26-According to George Orwell, who is watching us?
 27-Which sport takes place in a Velodrome?
 28-What is the currency of Poland?
 29-Trainspotting is a novel by which author?
 30-Which is the only planet in our solar system not named after a Roman or Greek god?

4. 31-In which sport is the Davis Cup contested?
 32-What is the name of the daughter in The Addams Family?
 33-Jacinda Ardern became the Prime Minister of which country in 2017?
 34-Which magazine has a distinctive yellow border on the cover?
 35-How many wisdom teeth does the average adult have?
 36-What type of rice is risotto usually made from?
 37-How many rings is the Olympic symbol made up of?
 38-Which British supermarket has a clothing range named 'George'?
 39-What is a young giraffe called?
 40-Copacabana Beach is located in which city?

5. 41- Which US agency has the motto "For the benefit of all"?
 42-Pyrophobia is the fear of what?
 43-What is the capital of Argentina?
 44-A podiatrist specialises in treating which part of the human body?
 45- Which singer had a hit in the 1970s called 'Maggie May'?
 46-Emma Bunton is known as which Spice Girl?
 47-What is the name of the winged horse in Greek mythology?
 48-What is the name of Donald Duck's girl friend?
 49- 'The Beach' starring Leonardo DiCaprio is set in which country?
 50-Who launched the Cultural Revolution in China?

Answers on Page 27



Village Directory of Clubs and Societies

Please send any updates or changes to this Directory to the editor as soon as known. Last Updated March 2023		Great Barton CE Primary Academy Mrs. Claire Ratley, School Road, Great Barton, IP31 2RJ	01284 787353
Badminton Club Mrs. Ann Tee, 22 Downing Drive, Great Barton, IP31 2	01284 788161	Girlguiding Suffolk (in Bury) Jan Butler	01284 787507
Bowls Club (Outdoor) Mr. Henny Van Holland, 32 Conyers Way, Great Barton, IP31 2SW greatbartonbowlsclub.webnode.com	01284 787242	History Society Jane Bream Email: j.bream711@btinternet.com	01284 702336
Children's Society Email: Elaineandmick@aol.com		Holy Innocents' Church Reverend Ben Edwards The Vicarage, Church Road, Gt Barton, IP31 2QR Email: revdbenjaminEdwards@gmail.com or admichurch64@gmail.com	07522 396397
Church Institute Bookings Linda Scoles lindascoles@uwclub.net	01359 230392	Holy Innocents' Choir Leader Bridget Read. Email: beneficepr@gmail.com www.greatbartonandthurston.org.uk	07814 946841
Freedom Church Sarah Bullen (Administrator), Mill Road, Great Barton, IP31 2RU office@gbfc.org.uk www.freedomchurchgb.org	01284 788032	Mothers' Union Pat Sheppard or Jill Rood 01359 231647	01284 705540
Great Barton Allotment Association Email: www.gballotments@gmail.com		Netball Club (Phoenix Flames) Mrs. Emma Gibson Email: gibsonerj@btinternet.com	01284 788384
Great Barton Community Woodland Mr. Mick Brabrook, 16 Downing Drive, Gt Barton, IP31 2RP mick.brabrook@gmail.com www.gbcw.onesuffolk.net	01284 788147	Pathways (Pre-School) Mrs. Julie Goodwin, School Road, Gt Bar- ton, IP31 2RJ www.greatbartonpathways.co.uk	01284 788258
Great Barton Computer Club Email: secretary.gbcc@outlook.com www.gbcc.onesuffolk.net		Scout Group Mr. John Pitcher john.pitcher@btinternet.com www.gtbartonbscouts.co.uk	01284 787787
Great Barton Luncheon Club Mrs. Chris Johnson	01284 787687	Second Chance Stroke Club Peter Marsh Email: Peter.Marsh@stroke.org.uk www.secondchancestrokeclub.co.uk	07884 125757
Great Barton Thanksgiving Fund (Village Hall Management Committee) Mr. P Fisk, Blenheim, Thurston Road, Great Bar- ton, IP31 2PW	01359 231382	Women's Institute Mrs. Kath Hopper Great Barton Suffolk West (thewi.org.uk)	01284 787449
Great Barton Village Hall (bookings) Diana Silverstone: Email : diana.74@hotmail.co.uk http://greatbartonvh.onesuffolk.net	01359 352357	West Suffolk Dog Training Society Sarah Connell	01284 767050

Advertisements

Commercial advertising rate for Great Barton Newsletter 2023

The Great Barton A4 newsletter is published 3 times a year.

It is distributed to all households within the Parish and can also be viewed on the Village Website as a flipbook

Payment in advance with your order. Please contact the editor

Size	Dimensions of type area	Cost per insertion
Back Page – Colour	W 185mm x H265mm	£120
Back inside – monochrome	W 185mm x H265mm	£110
Full page	W185mm x H265mm	£100
Half Page (Horizontal)	W185mm x H130mm	£50
Quarter Page (Vertical)	W90mm x H130mm	£25
Large Box	W90mm x H60mm	£13.50
Small Box	W90mm xH30mm	£9.00
Small Ad (for sale, wanted, lost or found)	Text only	£5.00

Large Box size

You could advertise your business here

£13.50 for each edition

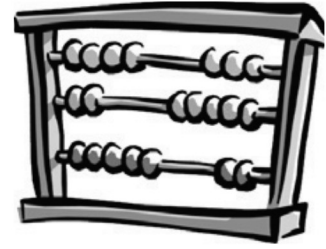
Small Box size

You could advertise here for £9.00

Text only £5.00

TWINN ACCOUNTANTS LTD

We offer an efficient and professional accountancy service at a very competitive rate.



- ✓ Accounts and tax returns for Sole Traders, Partnerships and Limited Companies.
- ✓ Self-Assessment
- ✓ VAT returns including MTD
- ✓ Payroll Services

- ✓ Construction Industry Scheme
- ✓ Bookkeeping and Management Accounts
- ✓ Tax Planning
- ✓ Company Secretarial Services
- ✓ Training on Xero and QuickBooks

Tel: 01284 787616

Email: info@twinnaccountants.co.uk

www.twinnaccountants.co.uk

Suite 4, East Barton Barns, Great Barton, IP31 2QY

All accountants are not the same...we promise!



Pause 4 Paws

www.pause4paws.co.uk

Holly@pause4paws.co.uk

07379329321

There are lots of behaviours which can result from developmental gaps in our dogs

- Constantly barking
- Showing aggression to people or dogs
- Destructive behaviour
- Excessive licking
- Pulling whilst on a lead
- Separation anxiety
- Struggling with recall

Whilst traditional methods of dog training can offer improvements in some case, it can act more as a band aid on a deeper wound that requires repair. The Hemene approach to dog development aims to heal that wound.

The Hemene method was developed by Shaun and Kim Ellis, owners of the Wolf and Dog Development Centre in Cornwall and is the result of decades of their observations whilst living with wild & captive wolves and dogs.

This unique approach takes the gentle family-oriented teachings of the wolf and helps to repair gaps in a dog's development, using the natural side of the animal. It is about equality and valuing all members of the family. By teaching our dogs to regulate their emotions, help them to feel safe, calm and to stay regulated in stressful situations we help them to cope in our busy world.

If you would like to find out more then please visit our website, or alternately drop us an email.

Advertisements

West Suffolk Chimney Services

Your local sweep

All types of chimneys swept

Open fires	Member of the Guild of Master Chimney Sweeps
Woodburners	Traditional and Power sweeping
Multi-fuel stoves	Fully insured
Boiler flues	Insurance-recognised certificates with every job
Agas and Ranges	Cowls and bird guards supplied and fitted
Inglenooks (additional charge)	CCTV camera inspection available

£60 for a standard sweep

Contact Ian Rice

01284 787238 or 07841 390292



Bespoke Upholstery Services &

Soft Furnishings

Debbie Jordan

AMUSF Qualified Upholster

Traditional & Modern Techniques

Telephone 07771 966662

email : debbie@theupholsteryhut.co.uk

www.theupholsteryhut.co.uk

GADD BROTHERS
TREES AND LANDSCAPES

**TREE WORK &
ARBORICULTURAL SERVICES**

Qualified and insured professionals undertaking all aspects of tree work, from dismantling mature dangerous trees to pruning and planting.



WOOD FARM

KILN DRIED FIREWOOD

Locally sourced hardwood timber from sites with felling licences to ensure sustainability. All logs are Kiln dried on site, 'Ready to Burn' certified with a moisture content of below 20%, to ensure clean and efficient burning.

01284 788794 • info@gaddbrothers.co.uk • gaddbrothers.co.uk

Wood Farm, Brand Road, Great Barton IP31 2NY

Advertisements

JC Aesthetics & Beauty

30 year's experience, WSC Registered.

Facials, Laser, Semi-Permanent Make-Up

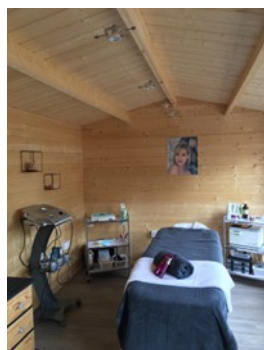
Anti-Ageing Injectables, Skin Tag & Blemish Removal

Electrolysis, Waxing and so much more.

Located in Great Barton.

Tel 07305228909 For Appointment, Prices, Information

15% Discount for new clients



www.facebook.com/jancurson28

Mole Catcher

Missing!

ATTITUDE DANCERS ACADEMY Culford Branch

Ballet, Tap And Modern Dance Classes

From less than £3.00 per week per session

Children from age 3

Dance school insurance

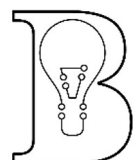
Annual Summer school

Plenty of free parking

Qualified dance teacher,
Mandie Rogers AISTD

attitudedancersacademy.co.uk

Mobile: 07887 653239



**BURROUGHS
ELECTRICAL**
DOMESTIC - COMMERCIAL - INDUSTRIAL

Luke Burroughs

Tel: 01359 240 462

Mobile: 07921 235603

Email: luke@burroughselectrical.co.uk

Web: www.burroughselectrical.co.uk

Facebook Page: @burroughselectrical

NO job too BIG or too SMALL!



Advertisements



DAVID MARTIN

MOTOR VEHICLE ENGINEERS & CAR SALES

Station Hill, Thurston, Bury St Edmunds, Suffolk, IP31 3QU
 info@ davidmartinmotorengineer.co.uk



Tel: **01359 230536** Mob: **07808 508864**

Open Monday - Friday 8am - 5pm

www.davidmartinmotorengineer.co.uk

Local, honest, friendly, reliable family run business (with over 150 years experience) offering car and light commercial vehicle repairs at competitive prices

Free collection and delivery service from your home or workplace
 within the local area



Bookings & enquiries can be made via telephone, e-mail or text message (contact details above)

SERVICING ON ALL MAKES AND MODELS

including vehicles still under main dealer warranty

Cam belts
 Diagnostics
 Welding
 Brake overhauls



MOT's

Class 4, 5 & 7 (minibus) (up to 3,500kg)

****including free retest****
 within 10 working days

Exhausts
 Batteries
 Recoveries
 4 Wheel alignment



Courtesy car (subject to availability)

Tyres supplied & fitted at competitive prices

available same day when ordered before 12pm



Air Con. re-gas & repairs

R134a and R1234yf

est. available on request



We are proud to be members of the Good Garage Scheme, check our feedback @ www.goodgaragescheme.com

NO WORK IS CARRIED OUT WITHOUT FULL CONSENT FROM THE CUSTOMER



JJB Garden & Maintenance

Garden Maintenance Clearance
 Handyman Odd Jobs Gutter Clearance

A friendly and reliable service - Here to help!

Contact Jazz

Phone 07403 062652

Email: jjbgardenssuffolk@gmail.com

Find me on Facebook: JJB Garden & Maintenance

Small Box size

You could advertise here for £9.00

HOME AND PROPERTY IMPROVEMENT

All types of interior and exterior work undertaken by a qualified, experienced local tradesman.

Carpentry; wall and floor tiling; renovation work; painting & decorating inside and out; built in wardrobes; shed re-roofing; fencing; gates; patios; small brickwork and re-pointing to name but a few.....

Have all those jobs you've been wanting to have done for ages, carried out under one roof!!

For a free quote and advice call or email:

John Ranson

01284 788248 07770932799

j.w.ransonbuilding@gmail.com

For a personal and trustworthy service, fully insured, and guaranteed quality work.

Over 20 years' experience, C & G qualified. Portfolio of photos available on request and references available.



Leon Brown Arb-Agri Contracting LTD Tree Surgery Services

Fully qualified professionals with over 17 years experience

- Dead Wooding & Crown Lifting
- Chipping
- Crown Reductions
- Felling & Dismantling
- Hedge Cutting
- Site Clearance Works
- Woodland Management
- General Ground Maintenance

leonbrown.28@hotmail.co.uk 07552393830 01359408521

leonbrownarboriculturalservices.co.uk

Answers to Family quiz

1-Facebook 2 -Sheffield 3-Hong Kong 4 -Horse 5 -Calcium 6 -Central Intelligence Agency 7 -South America 8 -Pineapple 9 -The blood 10- Avocado

11- Bank of England 12-Nine 13 -Stephen King 14-Robert Baden-Powell 15- Australia 16 -Cow 17-Germany 18-Sikhism 19 -14th July 20- Table Mountain

21 -Scotland 22-Duff Beer 23-Red 24 -Four; they are Eastern, Central, Mountain & Pacific. 25 -Lake Superior 26 -Big Brother 27-Cycling 28 -Zloty 29-Irvine Welsh 30 - Earth

31-Tennis 32 -Wednesday Addams 33 -New Zealand 34- National Geographic 35 - Four 36 -Arborio -37-Five 38-Asda 39- A calf 40-Rio de Janeiro

41- NASA 42-Fire 43 -Buenos Aires 44-The feet 45- Rod Stewart

46- Baby Spice 47- Pegasus 48 -Daisy Duck 49-Thailand 50-Chairman Mao



Larkbridge

Larkbridge Mortgages are Independent
Whole of Market Mortgage Specialists

Right on your Doorstep...

- Home Renovation Mortgages
- Equity Release and Later Life Lending Guidance
- High Net Worth and Large Loan Specialists
- Self-Build Mortgages
- Re-Mortgage to save money
- Face to Face & Online Meetings available
- Development & Investment Finance, including Buy to Let, Bridging & Second Charge Loans
- New Build & First Time Buyers
- Mortgage & Family Protection and Insurance Advisers
- Business & Self-Employed Protection Consultants
- Self-Employed Mortgage Advisers



Call us on:

01284 729250

or by email to:

admin@larkbridge.co.uk



www.larkbridge.co.uk