

Great Barton Village Newsletter Winter 2023-2024



**Thank you to Peter Fisk for your service to
Great Barton Parish Council
From
Maggie Dunn**



I want to take a moment to thank Peter Fisk for his tireless work which he has done in Great Barton.

Peter was born in the village in 1938 and he married Ann in 1961. Peter worked for Suffolk County Council and part of his job was tree planting. We can thank him for a lot of the trees planted around the village.

Peter went on to the Trustees of the Village Hall in 1963 and he took over as chair in 1984.

He has worked tirelessly to make sure our Village Hall has flourished. He and Ann also ran the bar for several public and private events in the village hall.

He went on the Parish Council in 1976 and has worked hard for the village in that role ever since. He is the tree expert for the Parish Council and has been invaluable in that role.

In 2002 he was successful in getting allotments for village.

**If anyone inspires us,
it should be Peter, for
his selfless service
to the village.
Thank you**

Editorial



In this Issue

- ⇒ Thanks to Peter Fisk
- ⇒ Editorial page 3
- ⇒ News from Community Groups 4-9
- ⇒ **Emergency Contact numbers page 9**
- ⇒ Round the Village 10-11
- ⇒ Report from the Chair of the PC 12
- ⇒ Parish Council information 13-19
- ⇒ Church Information 20–22
- ⇒ Village Directory page 23
- ⇒ Advertisements pages 24-32

Distribution:

Tracey Butt c/o 01284 787386
 Please contact Tracey if you are willing to help distribute the newsletter

This newsletter and the previous editions can also be viewed in full colour online on the Village Website as a "Flipbook"

greatbarton.suffolk.cloud

*Published by: Great Barton Parish Council
 Photography copyright: ©GBPC*

Sorry for the delay in putting this edition together illness sadly got in the way!

T

hank you to everyone who submitted photos for the front cover and within this edition. It was a difficult choice!

They show the village in its beautiful winter attire. Also included on the front cover is the amazing flower display of Bertuna which was displayed at the church in the autumn.

Please send in more photos with a theme of spring flowers for the spring edition!

With Christmas fast approaching there are plenty of winter events to take part in around the village. For easy reference a calendar is provided on the next page.

The events sound like a lot of fun so please put the dates in your diaries!

Jean

The next edition of this newsletter will cover March , April and May

Deadline for submissions

10th February 2024

Please send in anything of interest—gardening tips, recipes, stories about the village etc

Seasons Greetings from the Parish Council



Some Social Dates (mostly in the village hall) for your diary this winter :

Local History Society	Tuesday November 7th 2.30pm
West Suffolk Horticultural Society Competition and display	Friday November 10th (Entries by November 6th)
Film Night	Saturday November 18th 7.30 pm
Christmas Tree Event at the Church	from 30th November
Luncheon Club for Members Only	Friday December 8th
Parish Council Christmas Coffee Morning	Saturday 9th December 10.00am
Senior Citizens' Christmas Lunch	Friday 15th December
Carols by candlelight at Holy Innocents	Friday 22nd December at 7.00pm
Midnight Mass at Holy Innocents	Sunday 24th December 11.30pm
Christmas Morning Holy Innocents	Monday 25th December 10.00am
WI Social evening and new members evening	Tuesday January 2nd 2024 7.30pm
Circle Dance Taster session	Wednesday January 10th 2024 2.30 –3.30pm
Film Night	Saturday January 20th 2024 7.30pm Saturday 17th February 2024 Saturday 16th March 2024

News from the Community

Great Barton Luncheon Club

We are a Luncheon Club which meets at Great Barton Village Hall on **the second Friday of each Month** (except in August) .

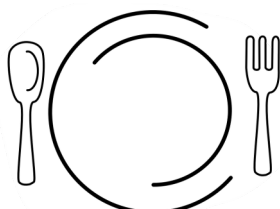
Members are welcomed with either a glass of sherry or fruit juice and served with a two course meal, followed by tea or coffee, at a cost of **£5.00 per person** (plus a very small yearly membership fee)

We are a very friendly and welcoming group. If you are 55 years or over and live in Great Barton and would like to join us, we would be delighted to hear from you, and put you on our waiting list.

Please contact:

Cindy Morgan:

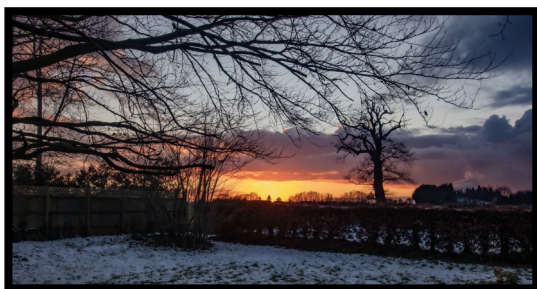
01284 788487



Have you taken a local photo which would look good on the front cover of the Spring edition of the Great Barton newsletter?

Please submit spring themed photos to the editor ..

editorgbpcnewsletter@gmail.com



theWI | Suffolk West
INSPIRING WOMEN

Great Barton Women's Institute

In November this year Great Barton Women's Institute (WI) will be holding a celebration to mark its 90th anniversary.

Our WI was formed on 23rd November 1933 when 34 ladies from the village attended its inaugural meeting held in the Church Institute on The Street. As we enter our 90th year we have a membership of 45+ and hold our monthly meetings in the Village Hall. Joining the WI can help members forge new friendships especially if you are new to the area.

The WI's aim is to provide an interesting and at times challenging platform for ladies aged 18 and upwards to join together and learn new skills and gather expertise in many areas, but also to encourage members to take part in a varied programme of talks, activities, walks, singing and outings to name just a few. There are opportunities to meet with other WIs locally, nationally and internationally. Not everyone can be an expert in everything and learning new skills is great fun and presents a challenge for like-minded ladies to reach new goals.

If you would like to join with us to experience new challenges and reap the benefits that being a WI member can bring please contact our President, Sue Lawes (07581 696261) for further details.

Our meetings are held on the first Thursday of every month in Great Barton Village Hall and the usual start time is 7.30pm.

Initially there is an entrance fee of £4 for visitors which includes a raffle ticket and refreshments. You may visit three times before becoming a member.

To become a full member you will need to pay a joining fee, part of which is sent to the WI National Organisation.

We look forward to welcoming you

Further information :

[Great Barton | Suffolk West \(thewi.org.uk\)](http://thewi.org.uk)

Great Barton Film Night



Forthcoming Dates

Saturday 18th November 2023

The Notebook

2004
Cert 12A

Saturday 20th January 2024

Gigi

1958
Cert PG

Saturday 17th February 2024

Living

2022
Cert 12

Saturday 16th March 2024

My Sailor, My Love

2022
Cert 12

Public admission £4.00

Doors open 7.00pm

Children (under 16) £2.00

Film Show starts 7.30pm

GBFN.OneSuffolk.net

Tea, coffee and Ice-creams available.

These shows are open to anyone and everyone – just turn up and pay on the door or to reserve tickets call:

Maggie Redshaw 01284 788397

Great Barton Computer Club



This is a Computer Club for everybody, from people who are new to computers, to those of more advanced

knowledge. Everybody is welcome. We have Teaching Meetings and Work Shops, on two or more Mondays in the month. These alternate between Laptops, iPad and Mobile Phone sessions. **We also have a Drop – In session on the first Monday of the month for members to have one to one assistance.**

Please feel free to come and visit us to see what we get up to and maybe, if you like what you see, even join the Club. We start at 2.00pm.



You can visit our web site at: - www.gbcc.onesuffolk.net or contact our secretary

secretary.gbcc@outlook.com

Don't forget !

You can view this newsletter in full colour on the Great Barton Parish website.



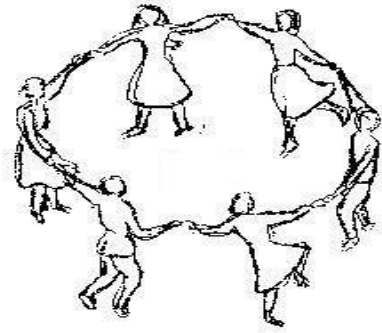
greatbarton.suffolk.cloud

News from the Community

Come and try Circle Dancing free in Great Barton**“I've never heard of circle dancing.”**

Dancing in a circle is an ancient tradition common to many cultures for marking special occasions, strengthening community and encouraging togetherness.

Modern circle dance draws on the rich and diverse traditional dances of many countries, including the Balkans, Greece, Israel, Russia, and France. There is also a growing repertoire of new dances to classical music and contemporary songs.



Circle dances can be energetic and lively or gentle and reflective, but the aim is always to enjoy dancing with others and to create a sense of well-being and community through enjoyable gentle (mostly!) exercise to lovely world music.

“Can I do it? “

Yes! Mostly straightforward walking steps (with occasional challenges!). Each dance is taught, there is no audience and everyone is welcome. So come on your own or with a friend (you do not need a partner) and give it a try!

“Where? When?”

Great Barton Village Hall, Elms Close IP31 2NR. 2nd and 4th Wednesday afternoon from 2.30-3.30. Starting on 10 January with a FREE taster session! Thereafter £6/session, pay each time you come.

Put it in your diary now – great way to get in shape after the Christmas excesses!

I'd like to know more..... information from Jen Larner: 01284 705548

07896 495574

jenlerner@gmail.comwww.jenlerner.com.

**Congratulations to all the
past and present members of the
Great Barton Women's Institute on
celebrating 90 years
in our village.**

A fantastic achievement!

News from Community

Great Barton History Society.

The History Society meets In January, March, May, September and November on the first Tuesday of these months. We have a list of very interesting speakers lined up already for 2024. We meet in the Great Barton Village Hall Annex at 2.30pm. on the above Tuesdays and if you would like to come and visit us you would be very welcome, either with a view to joining us as a member for £10.00 per year, or as a guest. We usually charge guests £3.00 per visit. There will be a list of our up-and-coming speakers etc. pinned on the Village Hall notice board.

The **November 7th 2023** speaker will be the Rev. Tony Redman and he will be speaking about Building Stone in Suffolk. This meeting will be preceded by a very short AGM. (The last meeting of 2023)

Speakers for 2024:- **January 2nd**:- Martyn Taylor. A well-known Local Historian. His talk is called “ Under Bury St Edmunds”

March 5th:- Horry Parsons. His subject will be “ More Stories From the Tower” (This is the St Edmunds Cathedral Tower in Bury St Edmunds).

May 7th:- Sarah Doig. Subject is “Daniel Defoe’s Tour and Entertainment in Elizabethan England”

September 3rd:- Ruth French. “The History of Stowlangtoft Hall”

As you will probably have noticed we are trying to keep our subjects mostly local to Bury St Edmunds and Suffolk this coming year.

If you think you would be interested in visiting us or even joining the Club, please come along to one of our meetings.

Jane Bream. Secretary. Contact Details. Email: - J.bream711@btinternet.com Tel:- 01284 702336. Mob:- 07947595620

Are you interested in Local History?

**The History Society needs somebody who would be willing to become the
Great Barton Village Recorder.**

Contact Marcus King for further details: marcusking682@msn.com

News from Community

Winter Gardening tips

Unfortunately nobody submitted any gardening tips so here are just a few from a non expert gardener!

1. Last winter many of us made an error leaving our pots of flowers and bulbs outside to become frozen. A useful tip is to put a layer of bubble wrap inside the pot if it has to stay outside. This provides an extra layer of warmth and prevents the earth in the pot from freezing.
2. Take cuttings of buddleia , and roses now , put in a pot with some hormone rooting powder and see them sprout in spring!

Great Barton Emergency Operations Team

Mobile and Landline Numbers

John Roe	07845 529923	01284 787749
David Murray	07825 172446	01284 788606
Gemma Reid	07407 714372	01284 788439
Josh Pirt	07961 863866	01359 231011
Simon Stockdale	07572 037615	n/a
Eddie Gibson	07484 602289	01284 788384
Nicola Crouch	07739 852714	01284 788611
Maggie Dunn	07977 875882	01284 787357

Round The Village

Regular events in the Village Hall

<p><u>Mondays:</u> Parish Council, Computer Club, Pilates, Wine Society</p>	<p><u>Tuesdays:</u> Second Chance, History Society, Badminton, Dog Training,</p>	<p><u>Wednesdays:</u> Tadpole Tunes, Linnet Investment, Pilates, Circle Dancing (2nd and 4th Wednesdays)</p>
<p><u>Thursdays:</u> Pilates, WI (first Thursday)</p>	<p><u>Fridays:</u> Luncheon Club</p>	<p><u>Saturdays:</u> Coeliac Society, Guide Dogs Fundraisers, Film Night</p>
	<p><u>Sundays:</u> Region 7, Tea Dances, Football</p>	<p><i>See page 22 for a full list of contact details</i></p>



Bury St Edmunds Mobile Library Service

Route 1: Every 4 weeks on Tuesdays

- 1C Oakampton House 10.00 -10.20
- 1D School Road 10.25 - 10.50

Route 12: Every 4 weeks on Thursdays

- 12D Brand Road 10.35 -10.45

[Mobile libraries | Suffolk Libraries](#)

Did you know that if you are a mobile library user you can have the books for 8 weeks rather than the usual 4? I discovered this by chance back in April!



Village Hall Management Committee

If you would like to hire the hall please contact:

Diana Silverstone:

diana.74@hotmail.co.uk
<http://greatbartonvh.onesuffolk.net/>

The Hall committee is always looking for people willing to help with hall management.

Round The Village

Editor’s Conundrum from last edition

Some of the plants which Muntjacs hate (although not guaranteed!!!)

Heathers, Buddleia, Potentilla, Daphne, Allium, Calendula, Lily of the Valley, Aster, Daffodil.

I’ve had some success by planting herbs amongst the flowers, as they don’t seem to like plants with strong smells, and they then leave the flowers alone.

Try rosemary, oregano, mint, basil lavenders etc.

I also tried geraniums as it has a strong smell but they ate all the buds !

Any other suggestions? Please let me know!



How to Report a pothole

With so many potholes in and around our village it takes us all to report them to Suffolk County Council.

This can be done via their website, search report a pothole or if viewing online by using this link :

<https://www.suffolk.gov.uk/roads-and-transport/roads-pavements-and-verges/potholes/report-a-pothole>

and then follow the instructions.

It really helps to report these potholes for repair because without doing so the County Council just don’t know it needs repairing.



Self employed and looking for somewhere to advertise your business?

Advertise your business here

Copies are delivered to 900 homes in Great Barton and we also

upload each newsletter on the Great Barton website

Contact the editor for more details, the prices are

on page18



editorgbpcnewsletter@gmail.com



Parish Council Report from the Chair

Where has this year gone it doesn't seem long since I was writing to you this time last year. It has been an eventful year so that makes it go quicker.

What have your Parish Council been doing recently?

There have been some contentious planning applications that we have discussed and put our comments to West Suffolk Council. That is the process, although the Parish Council discuss them, we only make recommendations to West Suffolk mainly based on our Neighbourhood Plan, but also on West Suffolk's Local Plan.

West Suffolk are the decision making authority. If you want to comment on any planning application you can access the West Suffolk Planning Portal to make your comments.

The Parish Council are still trying to crack down on speeding through the village (see Councillor Gwyn James article on page 14). The Speedwatch Team and the cameras are all working well. We are also in the process of getting white gates set up at the entrances to the village to see if that makes a difference. They will make it obvious that vehicles are entering the village.

The Parish Council and the District Councillors, Sarah Broughton and Rebecca Hopfensberger, have between them bought two coronation benches to go into the Coronation garden at the school. They are made from recycled plastic and each bench is made from 476 plastic milk bottles that won't go into landfill.

There is a new defibrillator at the Freedom Church, again thanks to Mick Braybrook and again our District Councillors for getting that sorted. We now have a defibrillator on both sides of the A143; one at the Village Hall and now the one at the Freedom Church. Thank you to both those organisations for accepting them.

I have no new news re the Triangle Development or the Several's Development.

We will be organising a Christmas Lunch again, but this year it will be at the Village Hall . See the advert in this Newsletter on page 17 on how to

book. It is for our older residents especially those that live on their own.

We are short of Councillors, so please give some thought to joining us, it's your Parish Council and the more Councillors we have the more we can do to make Great Barton great and a better place to live.

There is also a shortage of Governors at the school please give that some consideration too, as the school is a big part of the village. I spent an afternoon at forest school and it was great fun. You will contribute to future generations and you do not need to have children or grandchildren at the school.

We have had the benches in and around the playground and playing field refurbished and they look good.

The Parish Council will continue to badger Suffolk County Council / West Suffolk Council to get our footpaths skirted back as they are atrocious and dangerous especially on the A143. They have done part of it in Mill Road but we need it all done.

If you have hedges that border footpaths or road edges now is the time to give them a good cut, the birds aren't nesting and they will be ready for next spring.

MAGGIE'S MOANS

We have again had damage in the playground. There are children from the village causing damage and that costs. The Parish Council will have to replace the damaged items. If we don't replace equipment that means children suffer. The playground is for use by children 12 and under, we are hoping to put equipment in for older children, but we need to protect what we have first.

I have also had reports of bullying in the playground and that will not be tolerated. The playground is for use by all children 12 and under. If you drive your children to the playground please park in the Village Hall Car Park.

Maggie

Parish Council Information



The blue coronation benches installed at the school , made from recycled plastic bottles. *Maggie*



Welcome To Great Barton!!

New to the Village?

Check out pages 3 and 22 to find out what is going on in the village, or contact the Parish Clerk for other information about the village matters.

Clerk to the Council

Amanda Jackson 07596 868600

clerk@greatbarton-pc.gov.uk



Parish Council Information

Update on Great Barton Programme to Reduce Traffic Speeding

The Parish Council has been actively running this programme over the last 18 months and current initiatives are covered below:-

Speedwatch

We have a team of 9 villagers who volunteer 1-2 times a month to measure vehicle speeds in 7 locations. Any vehicle owners speeding will have their details submitted to Suffolk Police and will receive a letter asking them to consider the dangers of speeding and the impact it has on Great Barton Residents.

ANPR Camera

Operated by Suffolk County Council, the cameras are placed in Great Barton for a week, 3-4 times a year. As with Speedwatch, educational letters are sent to vehicle owners recorded over the speed limit.

Vehicle Activated Sign (VAS)/Speed Indicator Devices (SID)



We have 2 new SIDs permanently located on the A143 (The Nook) and Mill Rd and the older VAS located currently on Thurston Rd.

The A143 SID has been in place for 15 months and has seen vehicles travelling over 30 mph drop from 42% to 23%, that's 1140 less cars per day speeding! The data was used by one local resident to persuade the police to increase their activity which has resulted in them monitoring at this location twice a month which does result in prosecution for speeding drivers.

Village Entrance Gates & Improved Signage



The next initiative will be to install a pair of village Entrance Gates similar to those recently installed in Stowlangtoft.

These not only enhance the village entrances but are known to lead to a reduction in speeding, especially when combined with adjacent road markings. The intention is to install these in Spring 2024 on the A143 (both ends), East Barton Rd, Mill Rd and Thurston Rd.



FREE Thermal Imaging Home Surveys run by Great Barton Parish Council- 31st January and 12th February 2024.

The COMMUNITY THERMAL IMAGING PROJECT is Helping You Keep Your Warmth In

The aim is to raise awareness about insulation and help you improve the energy efficiency of your home. This could mean:

- ❖ a reduction in fuel bills
- ❖ better health
- ❖ reducing your carbon emissions

Visit www.greensuffolk.org for further help & information



If your house is relatively new, already has insulated cavity walls and double glazing and feels warm – you might not learn much, except to get an even warmer glow after confirming your house is well insulated!

If your house is older and seems difficult to keep warm - you might learn exactly where the heat is escaping and get some ideas about where to insulate.

What can you learn from a thermal imaging survey?

- ❖ identify places which might have draughts
- ❖ detect whether cavity wall insulation is patchy or missing
- ❖ detect areas with less loft insulation

The cameras use infra-red radiation which *cannot* pass through glass. This means the camera cannot see through windows, doors or walls. A thermal imaging survey will not invade your privacy as we will only see the outside surface of your house.

WOULD YOU LIKE TO BE A VOLUNTEER FOR THE THERMAL IMAGING TEAM?

If you would like us to include your house in the survey, please contact

The Parish Council Clerk Amanda Jackson:

clerk@greatbarton-pc.gov.uk

or call : 07596 868600



**CHRISTMAS COFFEE
MORNING**



Saturday

December 9th

at

Great Barton Village Hall

10am – 1.00pm

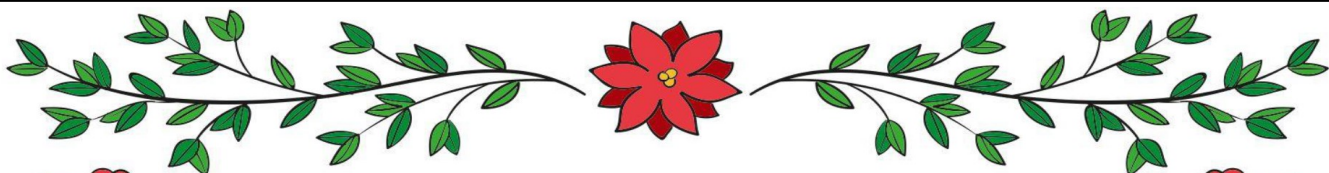
Coffee and Mince Pies

RAFFLE

Guess the Weight of the Cake

Craft Stalls





Christmas Lunch

For the elderly, vulnerable & people living on their own.

Friday, 15th December 2023

At Great Barton Village Hall

Please contact:

Molly Lumley

or

Maggie Dunn on 01284 78735

Volunteers needed at this event please contact Maggie



Parish Council Information

Parish Council Meeting Dates:**Planning Meetings**

13/11/23
 4/12/23
 8/1/24
 12/2/24
 11/03/24
 8/4/24

Full Council Meetings

21/11/23
 11/12/23
 15/1/24
 19/2/24
 18/3/24
 15/4/24

They can also be found on the village website:

<http://greatbarton.suffolk.cloud/parish-council/meeting-dates/>

New Email addresses for Parish Councillors

Maggie Dunn

Amanda Jackson

David Clarke

Matthew Parker

matthewparker@greatbarton-pc.gov.uk

Andy Baker

Gwyn James

Peter Fisk peterfisk@greatbarton-pc.gov.uk

Minutes of Parish council minutes are available here:

<http://www.greatbarton.onesuffolk.net/parish-council/minutes>

**What Matters to you in your local area?**

Is it the state of the local park, the need for more activities for young people, making the roads safer, improving the local environment, local development needs?

Whatever needs changing in your neighbourhood, you could be just the person to change it by becoming a local councillor.

No other role gives you a chance to make such a huge difference to the quality of life for your local community.

Could I be a Councillor?

The easy answer is 'almost definitely' as long as you are:

- British or a citizen of the Commonwealth
- At least 18 years old
- Registered to vote in the area or have lived, worked or owned property here for at least 12 months before an election

Being a Councillor

Being an effective councillor requires both time, commitment and hard work. You need to balance the needs and interests of residents within the local government framework.

Before you consider becoming a councillor you may want to discuss it with your family and friends to make sure they understand what you are taking on.

If you are interested in making a difference, please contact Maggie Dunn :

Tel : 01284 787357

or email

chair@greatbarton-pc.gov.uk

Parish Council Information

Bus Routes in Great Barton

338 - Bury St Edmunds - Walsham-le-Willows -
Market Weston - Diss

304 - Bury St Edmunds - Great Barton - Ixworth -
Stanton - Wortham - Diss

304 - Bury St Edmunds - Stanton - Diss

338 - Bury St Edmunds - Stanton - Garboldisham

2 - Southolt - Kenton - Westthorpe - Bury St
Edmunds

300 - Bury St. Edmunds - Pakenham - Ixworth -
Ixworth Thorpe

Website: [Buses in Great Barton - View Bus Services and Stops \(geopunk.co.uk\)](http://Buses in Great Barton - View Bus Services and Stops (geopunk.co.uk))

Great Barton Parish Council
www.greatbarton.onesuffolk.net

PARISH COUNCIL MEETINGS are held at the Community Room in the Village Hall, commencing at 7.30pm.

Public Sessions are available for Parishioners to raise matters in which they are interested.

Notice of all Parish Council Meetings and any other important Parish Council information is posted regularly on the Parish Council notice boards:

- by the Thurston Road mailbox,
- at the Mill Road/Livermere Road crossroads,
- outside the Primary School on School Road and on the website.

Copies of the minutes of meetings of Great Barton Parish Council are available on the Village website.

If you would like to receive **updates on the activities of the Parish Council**, please email the **Chair**

Maggie Dunn : chair@greatbarton-pc.gov.uk

**Local Councillor
Contact Information****District Councillor:**

Mrs. S Broughton

Manor House, Church Road,
Great Barton, IP31 2QR

Tel: 01284 787327 **Email:**

sarah.broughton@westsuffolk.gov.uk

District Councillor

Mrs. R Hopfensperger

17 Risbygate Street, Bury St Edmunds, IP33 3AA

Tel: 07876 683516 **Email:**

rebecca.hopfensperger@suffolk.gov.uk

County Councillor:

Mrs. R Hopfensperger

17 Risbygate Street, Bury St Edmunds, IP33 3AA

Tel: 07876 683516 **Email:**

rebecca.hopfensperger@suffolk.gov.uk

Member of Parliament:

Rt Hon Jo Churchill MP

10 Hatter Street, Bury St Edmunds, IP33 1LZ

Tel: 01284 752311

**Ideas for Future editions
of the
Parish Council Newsletter**

Do you fancy becoming a journalist?

**We need a small team of people
who would be willing to visit some
of our senior citizens who have
interesting stories about the village
to tell!**

Contact the editor for further information.

editorgbpcnewsletter@gmail.com

Church Information

Did you have a chance to see the floral displays at Holy innocents for our Harvest Festival? A majestic arrangement on the font and the spectacular Bertuna display in our Lady Chapel, the woman from the Great Barton Village sign, sculpted from wire and then decorated with flowers and plants – there is a picture on the front of this newsletter if you missed it. A testament to the talent of our parishioners, and indeed reflective of the creativity bubbling quietly along in our village.

I sometimes like to see what’s happening around the village on the Facebook page, and am often inspired to see the beautiful photography, amazing and delicious looking bakes from young and old alike, artisan food producers, the occasional poem, dance and drama classes – wonderfully creative people in all sorts of ways!

It can be a little difficult to discern the character of Great Barton as a village, most folk I talk to from elsewhere mostly know Great Barton as ‘that village you drive through on the way to...’. But I think there is fantastic opportunity for the village to be known for its creativity! It’s a great way to get people talking, get people together and show our talents off to the world. I’d love to see people’s talents popping up and celebrated over the next year.

I wonder whether you have a creative talent, or perhaps know someone whose creativity just needs that little bit of encouragement? Perhaps as Winter approaches (if it ever arrives!), and we find ourselves indoors a bit more, our creative juices will flow and works will be waiting for their own time to shine. Holy Innocents is a small space, but we love being able to feature people’s creative work, celebrating the vision and skill of village folk, and the many talents that God gifts us with. So get artsy, crafty, cook-y, snappy, dance-y and music-y! And share your wonderful creativity with us all!"

***The Rev'd Fr Benjamin Edwards
Vicar of Great Barton & Thurston***



Volunteering Opportunity

Due to increasing popularity , the Meeting Point café , held each Wednesday requires additional help between 10.30 am and 2pm on a rota basis to assist with serving lunches, tea and coffee to mostly senior citizens from the surrounding area.

Lunch and tea/coffee will be provided .

Contact

Betty Holdgate on 01284 788196

If you could spare a little of your free time

Church Information

Great Barton and Thurston Benefice Services December 2023

The following services will take place in the Benefice:

Sunday 3rd December:

Benefice Service, Sung Eucharist, at Holy Innocents, Great Barton at 10.30am

Evensong at St Peter's, Thurston at 3.30pm

Wednesday 6th December:

Holy Communion (CW) at Montana at 11.15am



Sunday 10th December:

[Holy Communion \(BCP\) at Holy Innocents at 8.30am](#)

Benefice Service, Sung Eucharist, at St Peter's, Thurston at 10.30am

Wednesday 13th December:

Holy Communion (CW) at Holy Innocents, Great Barton at 10.30am

Sunday 17th December:

[Holy Communion \(BCP\) at St Peter's at 8.30am](#)

Together Family Church Thurston at St Peter's for Christmas. (Together Family Church take over St Peter's at 10.00am)

Holy Communion at Holy Innocents Church at 10.30am

Service of Nine Lessons and Carols at St Peter's Church at 6.00pm

Wednesday 20th December:

Holy Communion (CW) at St Peter's at 10.30am

Friday 22nd December:

Carols by Candlelight at Holy Innocents Church at 7.00pm

Sunday 24th December:

Crib Service at St Peter's, Thurston at 2.00pm

Crib Service at Holy Innocents, Great Barton at 4.00pm

Midnight Mass at St Peter's, Thurston at 11.30pm

Midnight Mass at Holy Innocents, Great Barton at 11.30pm

Monday 25th December:

Holy Communion (BCP) at St Peter's at 8.30am

Christmas Morning Holy Communion (CW) at St Peter's, Thurston at 10.00am

Christmas Morning Holy Communion (CW) at Holy Innocents, Great Barton at 10.00am

Wednesday 27th December:

No Service

Sunday 31st December:

Holy Communion (BCP) at St Peter's at 8.30am

Church Information

Montana Service Times

Montana on East Barton Road has a Roman Catholic mass at the following times:

Sunday 10.30 am

Weekdays (Mon - Fri) 8.15 am

**FREEDOM
CHURCH**



*A heart for the
community
A place where God
dwells*

<https://www.freedomchurch.org.uk>



Holy Innocents Church

www.greatbartonandthurston.org.uk

Our on-line magazine can be found on our website:

<http://themessengergtbarton.suffolk.cloud>

The Church Facebook pages:

Holy Innocents: <https://www.facebook.com/Holy-Innocents-Church-Great-Barton685807921585678/>

St Peter's:

<https://www.facebook.com/St-Peters-Church-Thurston-1790473917903849/>

Church Institute

The Church Institute is a lovely venue available for private and regular club bookings. It is also available for parties, celebrations, wedding receptions, funeral wakes and other general use.

For prices and enquiries please contact:

Linda Scoles 01359 230392 or

Reverend Ben Edwards at

revdbenjaminedwards@gmail.com

Church Officers

Vicar : Reverend Ben Edwards

Email: revdbenjaminedwards@gmail.com

Churchwardens:

Tim Frost 01284 787442

Angela Pearce 01359 230395

Verger:

Linda Scoles 01359 230392

PCC Secretary:

Jane Dalton 01284 788613

Treasurer:

Kathy Drakes 01284 787746

Village Directory of Clubs and Societies

Please send any updates or changes to this Directory to the editor as soon as known. Last Updated October 2023		Girlguiding Suffolk (in Bury or Thurston) Jan Butler nwdvision_girlguidingsuffolk@btinternet.com	01284 787507
Badminton Club Mrs. Ann Tee, 22 Downing Drive, Great Barton, IP31 2	01284 788161	History Society Jane Bream Email: j.bream711@btinternet.com	01284 702336
Bowls Club (Outdoor) Mr. Henny Van Holland, 32 Conyers Way, Great Barton, IP31 2SW greatbartonbowlsclub.webnode.com	01284 787242	Holy Innocents' Church Reverend Ben Edwards The Vicarage, Church Road, Gt Barton, IP31 2QR revdbenjaminEdwards@gmail.com or admichurch64@gmail.com	07522 396397
Church Institute Bookings Linda Scoles lindascoles@uwclub.net	01359 230392	Holy Innocents' Choir Leader Bridget Read. Email: beneficepr@gmail.com www.greatbartonandthurston.org.uk	07814 946841
Freedom Church Sarah Bullen (Administrator), Mill Road, Great Barton, IP31 2RU office@gbfc.org.uk www.freedomchurchgb.org	01284 788032	Mothers' Union Pat Sheppard or Jill Rood 01359 231647	01284 705540
Great Barton Allotment Association Email: www.gballotments@gmail.com		Netball Club (Phoenix Flames) Mrs. Emma Gibson Email: gibsonerj@btinternet.com	01284 788384
Great Barton Community Woodland Mr. Mick Brabrook, 16 Downing Drive, Gt Barton, IP31 2RP mick.brabrook@gmail.com www.gbcw.onesuffolk.net	01284 788147	Pathways (Pre-School) Mrs. Julie Goodwin, School Road, Gt Barton, IP31 2RJ www.greatbartonpathways.co.uk	01284 788258
Great Barton Computer Club Email: secretary.gbcc@outlook.com www.gbcc.onesuffolk.net		Scout Group Mr. John Pitcher john.pitcher@btinternet.com www.gtbartonbscouts.co.uk	01284 787787
Great Barton Luncheon Club Cindy Morgan	01284 788487	Second Chance Stroke Club Peter Marsh Email: Peter.Marsh@stroke.org.uk www.secondchancestrokeclub.co.uk	07884 125757
Great Barton Thanksgiving Fund (Village Hall Management Committee) Mr. P Fisk, Blenheim, Thurston Road, Great Barton, IP31 2PW	01359 231382	Women's Institute Mrs. Sue Lawes Great Barton Suffolk West (thewi.org.uk)	01284 788431
Great Barton Village Hall (bookings) Diana Bilverstone: Email : diana.74@hotmail.co.uk http://greatbartonvh.onesuffolk.net	01359 352357	West Suffolk Dog Training Society Sarah Connell	01284 767050
Great Barton CE Primary Academy Mrs. Claire Ratley, School Road, Great Barton, IP31 2RJ	01284 787353		

Advertisements

Commercial advertising rate for Great Barton Newsletter 2023

The Great Barton A4 newsletter is published 3 times a year.

It is distributed to all households within the Parish and can also be viewed on the Village Website as a flipbook

Payment in advance with your order. Please contact the editor

Size	Dimensions of type area	Cost per insertion
Back Page – Colour	W 185mm x H265mm	£120
Back inside – monochrome	W 185mm x H265mm	£110
Full page	W185mm x H265mm	£100
Half Page (Horizontal)	W185mm x H130mm	£50
Quarter Page (Vertical)	W90mm x H130mm	£25
Large Box	W90mm x H60mm	£13.50
Small Box	W90mm xH30mm	£9.00
Small Ad (for sale, wanted, lost or found)	Text only	£5.00

Text only £5.00

Small Box size

You could advertise here for £9.00

Large Box size

You could advertise your business here

£13.50 for each edition

Advertisements

West Suffolk Chimney Services

Your local sweep

All types of chimneys swept

Open fires	Member of the Guild of Master Chimney Sweeps
Woodburners	Traditional and Power sweeping
Multi-fuel stoves	Fully insured
Boiler flues	Insurance-recognised certificates with every job
Agas and Ranges	Cowls and bird guards supplied and fitted
Inglenooks (additional charge)	CCTV camera inspection available

£60 for a standard sweep

Contact Ian Rice

01284 787238 or 07841 390292

**AMS Services
Landscape
Construction**

Offering an extensive range of services including summer house installation, garden offices, sheds and bases, Garage conversions, patios and fencing.

Call Martin on **07970 118658** to arrange a site visit or quotation



**BURROUGHS
ELECTRICAL**
DOMESTIC - COMMERCIAL - INDUSTRIAL

Luke Burroughs

Tel: 01359 240 462

Mobile: 07921 235603

Email: luke@burroughselectrical.co.uk

Web: www.burroughselectrical.co.uk

Facebook Page: @burroughselectrical

NO job too BIG or too SMALL!



JC Aesthetics & Beauty

30 year's experience, WSC Registered.

Facials, Laser, Semi-Permanent Make-Up

Anti-Ageing Injectables, Skin Tag & Blemish Removal

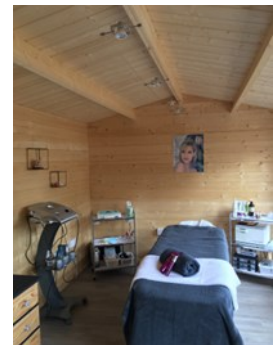
Electrolysis, Waxing and so much more.

Located in Great Barton.

Tel 07305228909 For Appointment, Prices, Information

15% Discount for new clients

www.facebook.com/jancurson28



Advertisements

HOME AND PROPERTY IMPROVEMENT

All types of interior and exterior work undertaken by a qualified, experienced local tradesman.

Carpentry; wall and floor tiling; renovation work; painting & decorating inside and out; built in wardrobes; shed re-roofing; fencing; gates; patios; small brickwork and re-pointing to name but a few.....

Have all those jobs you've been wanting to have done for ages, carried out under one roof!!

For a free quote and advice call or email:

John Ranson

01284 788248 07770932799

j.w.ransonbuilding@gmail.com

For a personal and trustworthy service, fully insured, and guaranteed quality work.

Over 20 years' experience, C & G qualified. Portfolio of photos available on request and references available.

Happy Pilates

Pilates Classes in Bury St Edmunds

Monday 9.30am and 6pm

Tuesday and Thursday 9.30am

Hazelwood Dance Studios Hollow Road

Call or message Sabina on 07503 753121

sabinasandy@hotmail.co.uk



JJB Garden & Maintenance

Garden Maintenance Clearance
Handyman Odd Jobs Gutter Clearance

A friendly and reliable service - Here to help!

Contact Jazz

Phone 07403 062652

Email: jibgardenssuffolk@gmail.com

Find me on Facebook: JJB Garden & Maintenance

Does anyone have any recommendations for winter walks in around Great Barton? .

A lovely crisp winter' s day walk is good for your health and clears the head!

There are some beautiful places to visit in this area.

Send to : editorgbpc@gmail.com



ATTITUDE DANCERS ACADEMY Culford Branch

**Ballet, Tap And
Modern Dance Classes**
From less than £3.00 per week per session

Children from age 3

Dance school insurance

Annual Summer school

Plenty of free parking

Qualified dance teacher,
Mandie Rogers AISTD

attitudedancersacademy.co.uk

Mobile: 07887 653239

Advertisements

GADD BROTHERS

T R E E S A N D L A N D S C A P E S

TREE WORK & ARBORICULTURAL SERVICES

Qualified and insured professionals undertaking all aspects of tree work, from dismantling mature dangerous trees to pruning and planting.



WOOD FARM

KILN DRIED FIREWOOD

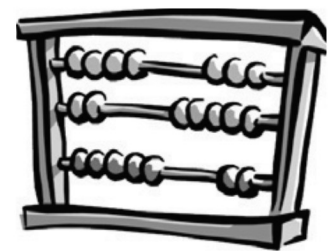
Locally sourced hardwood timber from sites with felling licences to ensure sustainability. All logs are Kiln dried on site, 'Ready to Burn' certified with a moisture content of below 20%, to ensure clean and efficient burning.

01284 788794 • info@gaddbrothers.co.uk • gaddbrothers.co.uk

Wood Farm, Brand Road, Great Barton IP31 2NY

TWINN ACCOUNTANTS LTD

We offer an efficient and professional accountancy service at a very competitive rate.



- ✓ Accounts and tax returns for Sole Traders, Partnerships and Limited Companies.
- ✓ Self-Assessment
- ✓ VAT returns including MTD
- ✓ Payroll Services

- ✓ Construction Industry Scheme
- ✓ Bookkeeping and Management Accounts
- ✓ Tax Planning
- ✓ Company Secretarial Services
- ✓ Training on Xero and QuickBooks

Tel: 01284 787616

Email: info@twinnaccountants.co.uk

www.twinnaccountants.co.uk

Suite 4, East Barton Barns, Great Barton, IP31 2QY

All accountants are not the same...we promise!

Advertisements



DAVID MARTIN

MOTOR VEHICLE ENGINEER & CAR SALES

Station Hill, Thurston, Bury St Edmunds, Suffolk, IP31 3QU
 info@davidmartinmotorengineer.co.uk



Tel: 01359 230536 Mob: 07808 508864

Open Monday - Friday 8am - 5pm

www.davidmartinmotorengineer.co.uk

Local, honest, friendly, reliable family run business (with over 150 years experience) offering car and light commercial vehicle repairs at competitive prices

Free collection and delivery service from your home or workplace
 within the local area



Bookings & enquiries can be made via telephone, e-mail or text message (contact details above)

SERVICING ON ALL MAKES AND MODELS

including vehicles still under main dealer warranty

Cam belts
 Diagnostics
 Welding
 Brake overhauls



MOT's

Class 4, 5 & 7 (minibus) (up to 3,500kg)

****including free retest****
 within 10 working days

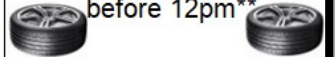
Exhausts
 Batteries
 Recoveries
 4 Wheel alignment



Courtesy car
 (subject to availability)

Tyres supplied & fitted at competitive prices

available same day when ordered before 12pm



Merry Christmas & Happy New Year from all at David Martins



We are proud to be members of the Good Garage Scheme, check our feedback @ www.goodgaragescheme.com

NO WORK IS CARRIED OUT WITHOUT FULL CONSENT FROM THE CUSTOMER



Pause 4 Paws

www.pause4paws.co.uk

Holly@pause4paws.co.uk

07379329321

There are lots of behaviours which can result from developmental gaps in our dogs

- Constantly barking
- Showing aggression to people or dogs
- Destructive behaviour
- Excessive licking
- Pulling whilst on a lead
- Separation anxiety
- Struggling with recall

Whilst traditional methods of dog training can offer improvements in some case, it can act more as a band aid on a deeper wound that requires repair. The Hemene approach to dog development aims to heal that wound.

The Hemene method was developed by Shaun and Kim Ellis, owners of the Wolf and Dog Development Centre in Cornwall and is the result of decades of their observations whilst living with wild & captive wolves and dogs.

This unique approach takes the gentle family-oriented teachings of the wolf and helps to repair gaps in a dog's development, using the natural side of the animal. It is about equality and valuing all members of the family. By teaching our dogs to regulate their emotions, help them to feel safe, calm and to stay regulated in stressful situations we help them to cope in our busy world.

If you would like to find out more then please visit our website, or alternately drop us an email.

Advertisements



**Bespoke Upholstery Services &
Soft Furnishings**

Debbie Jordan

AMUSF Qualified Upholster
Traditional & Modern Techniques

Telephone 07771 966662

email : debbie@theupholsteryhut.co.uk

www.theupholsteryhut.co.uk

FootWise

Foot Health Care
EVERY MONDAY

at

The School Room Clinic
Methodist Chapel
40 High Street, Ixworth IP31 2HJ

TREATMENTS INCLUDE

Nail Trimming + Thick Nail Reduction
Ingrown Nail + Hard Skin Removal
Cracked Heel + Corn Removal
Diabetic Foot Care

BOOK YOUR APPOINTMENT

at

The School Room Clinic
or

Home Visit

with

Camellia Dighe (Dip MFHP)
Medical Foot Health Practitioner

Call: 01359 230 428/07799664684

E-Mail: FootWise@Protonmail.com



**Leon Brown Arb-Agri
Contracting LTD
Tree Surgery Services**

Fully qualified professionals with over 17 years experience

- Dead Wooding & Crown Lifting
- Chipping
- Crown Reductions
- Felling & Dismantling
- Hedge Cutting
- Site Clearance Works
- Woodland Management
- General Ground Maintenance

leonbrown.28@hotmail.co.uk 07552393830 01359408521

leonbrownarboriculturalservices.co.uk

Word Search

How many words that are associated with a stroke can you find?

Submitted by Peter Marsh

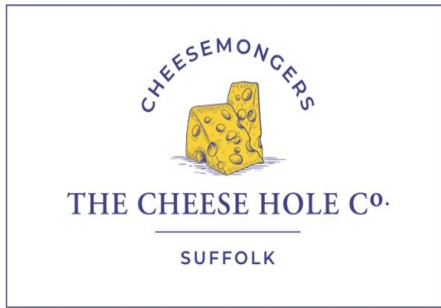


Ability anger arm benefits brain carer cry doctor fast fitness

frustration health help improvement Leg life lucky numb nurse penny physio
recovery research secondchance side speech survivor therapy volunteers

P	S	U	R	F	H	C	R	A	E	S	E	R	M	S
V	R	P	C	T	N	E	M	E	V	O	R	P	M	I
S	T	E	E	F	A	S	T	O	S	A	N	C	P	S
R	Y	N	A	E	T	E	I	H	B	C	A	D	F	E
E	R	N	T	R	C	Y	R	D	S	R	E	S	F	C
E	E	Y	O	P	O	H	O	R	E	N	A	T	I	O
T	V	K	A	I	R	E	V	R	T	N	R	I	T	N
N	O	C	S	S	T	H	I	H	G	B	M	F	N	D
U	C	U	D	B	T	A	V	E	P	M	F	E	E	C
L	E	L	U	L	B	O	R	T	H	U	H	N	S	H
O	R	L	A	I	K	R	U	T	Y	N	E	E	S	A
V	A	E	L	D	E	O	S	R	S	F	G	B	X	N
D	H	I	G	S	E	T	C	F	I	U	P	Y	E	C
L	T	E	R	D	T	C	P	L	O	S	R	U	Y	E
Y	L	U	L	C	E	O	L	R	T	C	O	F	L	L
L	N	B	C	P	T	D	Y	Y	P	A	R	E	H	T





Passionate About Cheese.

Call the shop on [01284 653 263](tel:01284653263)
 WEBSITE: thecheesehole.co.uk
 eMail: info@thecheesehole.co.uk



THECHEESEHOLECO

- Fine quality, artisanal and award-winning cheeses.
- British Isles, Continental, Goat and Ewe's milk cheeses.
- Wide range of delicious accompaniments.
- Carefully sourced and cared for, from farm to board.
- Many Gluten Free Products.



Follow us on [Instagram](#) opening hours (including Christmas), new cheeses arrivals and for the latest news.

We are located at
 28a Hatter St, Bury St Edmunds, IP33 1NE,
 up the road from the [Abbeygate Cinema](#).

OPENING	HOURS
Monday	Closed
Tuesday	10:00 am to 1:00 pm
Wednesday	10:00 am to 3:30 pm
Thursday	10:00 am to 3:30 pm
Friday	10:00 am to 4:00 pm
Saturday	10:00 am to 4:00 pm
Sunday	Closed

GIFT VOUCHERS also available.



Larkbridge

Larkbridge Mortgages are Independent
Whole of Market Mortgage Specialists

Right on your Doorstep...

- Home Renovation Mortgages
- Equity Release and Later Life Lending Guidance
- High Net Worth and Large Loan Specialists
- Self-Build Mortgages
- Re-Mortgage to save money
- Face to Face & Online Meetings available
- Development & Investment Finance, including Buy to Let, Bridging & Second Charge Loans
- New Build & First Time Buyers
- Mortgage & Family Protection and Insurance Advisers
- Business & Self-Employed Protection Consultants
- Self-Employed Mortgage Advisers



Call us on:

01284 729250

or by email to:
admin@larkbridge.co.uk



www.larkbridge.co.uk