

Great Barton Newsletter
Spring 2022



GREAT BARTON

CELEBRATES

2ND JUNE TO 5TH JUNE 2022

**KEEP THE DATES FREE AND
WATCH FOR MORE
INFORMATION**

Editorial

Welcome to your Spring edition of the Great Barton Newsletter for which we are introducing a new look. We hope you will enjoy reading it to find the latest news about village activities, as well as using it as a reference tool when needing contact details.

A new look also brings you a new Editor. I have been in Great Barton for a year, having moved from East Sussex last year during lockdown. I am very much enjoying living in this beautiful village and have appreciated the friendly welcome offered by so many of the residents. As I have previous experience of creating newsletters, I decided to volunteer as your Editor. Please enjoy reading this edition.

Deadlines for articles and adverts in 2022 are:

15th April (for the Jubilee Edition)

15th August

13th November

and 28th February 2023

We are looking for longer articles on the subject of (for example) local history, gardening and local walks. So, if you have time on your hands and are feeling creative, do send them in. As an example, I suggest you read the captivating article about **Icepits Wood** written by a local resident in this edition, it has certainly encouraged my husband and I to visit Icepits Wood this Spring to admire a serene and tranquil place on our doorstep.

Jan Butler

Editor editorgbpcnewsletter@gmail.com

Distribution:

Tracey Butt c/o 01284 787386

We would welcome your comments or suggestions about the new look Newsletter please contact : Linda Harley

In this Issue

- ⇒ *Editorial* 3
- ⇒ *News from the Community and Youth Groups* 4 –8
- ⇒ *Round the village* 9 -12
- ⇒ *Feature: Thoughts on Icepits Wood* 9
- ⇒ *Village Hall Events and Travel* 12
- ⇒ *Parish Council News* 13-23
- ⇒ *Jubilee Information* 16-17
- ⇒ *Church Information* 24-26
- ⇒ *Educational Information* 27
- ⇒ *Village Directory* 28
- ⇒ *Advertisements* 29- 32



Great Barton Emergency Operations Team

John Roe	01284 787749
Mick Brabrook	01284 788147
Nicola Crouch	01284 788611
Eddie Gibson	01284 788384
David Murray	01284 788606
Robert Possnett	01284 787322
Gemma Reid	01284 788439
Maggie Dunn	01284 787357

Published by: Great Barton Parish Council
Cover picture drawn by: Emily Hares Year 5
Photography copyright: @GBPC

New:

This newsletter can also be viewed in full colour on the Village Website as a "Flipbook"

News from the Community Groups

Great Barton Allotment Society

2022 marks ten years since the Great Barton Allotments Association first broke the soil on its site in Green Lane. During that time, it's gone from a small, bleak corner of a commercial field to a thriving little community, intent on growing their own fruit and vegetables.

Although we originally started with sixteen plots measuring 10m x 12m, plus an assortment of plots around the periphery of various shapes and sizes, it became clear that some people wanted something smaller so in recent years when a large plot has become available it has been split into two plots of 5m x 12m, thus allowing more people the opportunity to grow their own.

The allotments proved a lifeline for many during the difficulties of the past two years and interest soared as people walked, ran and cycled past our site. Many seeing it for the first time. Conversations were struck up between passers-by and the allotmenters and the feeling of community and support for each other was one of the good things to come out of a challenging time.

• • • • •

Great Barton Luncheon Club

We are a luncheon club who meet at Great Barton Village Hall on the second Friday of each month (except in August).

Members are welcomed with the choice of a glass of sherry or fruit juice and served a two-course meal, followed by tea or coffee, at a cost of £5.00 per person (plus a small yearly membership fee).

If you are 55 years or over and live in Great Barton and would like to join us, we would be pleased to hear from you to put you on our waiting list.

Please contact:

Christine Johnson 01284 787687

Brenda Turner 01284 787654

Those who walk or run the footpaths on two sides of our site will have noticed that we have continued to develop a British native hedge on our northern boundary to hopefully encourage wildlife whilst, as it grows, giving the plots a bit of shelter from the biting northerly winds.

The Association (and particularly our new Chair, John Light, pictured) is currently working with the Parish Council to help facilitate a new bench for walkers to enjoy a few moments of quiet reflection on their rambles around the village; we hope you enjoy the view across the beautiful countryside as much as we do from our privileged position inside our site.



• • • • •

Suffolk County Bowls Association

Bowls Open Weekend at

Great Barton Bowls Club

East Barton Road, IP31 2RF



Would you like to try BOWLS?

The green at this address will be open on

Saturday 30th April and Sunday 1st May

From 10am until 4pm

ALL equipment will be provided.

Wear whatever you want

BUT, please,

wear shoes with a flat sole

Club Members will be available to help

News from the Community Groups

**Great
Barton
Film
Night**



Forthcoming Programme

**Saturday March 19th
Downton Abbey 2019 Cert PG**

**Saturday 23rd April
The Personal History of David Copperfield 2019 Cert PG**

**Saturday 21st May
Sorry We Missed You 2019 Cert 15**

**Saturday 18th June
Belfast 2021 Cert 12A**

**Public admission £3.50
Children (under 16) £2.00**

**Doors open 7.00pm
Film Show starts 7.30pm**

GBFN.OneSuffolk.net

Tea, coffee and Ice-creams available.

These shows are open to anyone and everyone –just turn up and pay on the door
or to reserve tickets call: **Maggie Redshaw 01284 788397**



**Freedom Café in Mill Road is
open weekdays 9.30am-4.00pm.
Open to all !**

Great Barton Badminton Club

Can you hit a shuttlecock?

Join us at the Village Hall for a game of badminton, with a cuppa and a chat.

We are a small friendly Badminton Club meeting every Tuesday (in term time) from 2 – 4pm.

Interested ? - Telephone Ann on 01284 788161.



News from the Community Groups

Great Barton Women's Institute



Great Barton WI meetings are normally held on the first Thursday of the month at 7.30pm in the Village Hall. If you are new to the village, or if you just want to make some new friends, you can be assured of a warm welcome. The format of the evening includes a speaker or occasionally some home-spun entertainment, but always concludes with plenty of social time and refreshments.

As the WI is a large organisation, there is a variety of activities and opportunities such as sport, culture, craft, music etc. that you can get involved in, if you wish.

Details of the forthcoming meetings are listed below:

Thursday April 7th 'A Royal Year' by Ken Stone

Thursday May 5th Annual Meeting (starting at 7pm)

Thursday June 9th (A week later than normal because of the Jubilee Bank Holiday)

'Climate Change' by Tony Whittingham

Currently there is a charge of £3.00 for visitors which includes refreshments and a raffle ticket.

If you would like more information, please contact one of the following

Penny Mecham (01284 787408)

Sylvia Prior (01284 788049)

Kath Hopper (01284 787449)

You are very welcome to come and join us, we would love to see you.

Great Barton Computer Club

GBCC meets regularly to provide training sessions on a wide variety of computer and iPad subjects in a relaxed and easy to understand format.

We are a large and friendly club with approaching 100 members ranging from very experienced trainers who have worked with computers throughout their careers to absolute beginners who often are coming to technology for the first time in their later years.

We welcome members at all levels from complete beginners to experienced users and believe that everyone will learn something from our sessions.

An average month will start with a Drop-In session on the 1st Monday of the month where members can pre book to attend for one to one training to address specific issues they may be having with their machines.

The 2nd and 3rd Monday afternoons offer training sessions across Windows, Mac and iPad subjects.

Examples of sessions include How to Edit & Store Your Digital Photographs, An Introduction to the iPad, Cloud Storage and YouTube.

All our meetings are held in the Great Barton Village Hall or Annexe and start at 2pm.

If you are interested in learning more, please contact our Secretary at the address below and arrange to attend a meeting as a visitor.



If you decide to go on and become a member the annual membership is £15 per annum.

Contact: Julie King
at secretary.gbcc@outlook.com

News from the Community and Youth Groups

Great Barton History Society

The History Society meets In January, March, May, September and November at 2.30pm on the first Tuesday of these months. We have a list of very interesting speakers lined up already for 2022, and we have now resumed our meetings in the Village Hall. If you would like to come and visit us you would be very welcome, either with a view to joining us at £10.00 per year, or as a guest. We usually charge guests £3.00 per visit.

Recent and Forthcoming Meetings

Our Speaker on March 1st was Horry Parsons who spoke about the building of the Millennium Tower, which as many people will know, is the Tower that was added to the St Edmundsbury Cathedral in Bury and was completed in 2005. This Tower can be seen for many miles away.

On May the 3rd Ron Murray will be speaking to us. He is now retired, but for many years he was the curator of Moyse's Hall, the Museum located in the centre of Bury. He has a wide knowledge of the history of the area and is certain to be very interesting.

A list of our up-and-coming speakers is pinned on the notice board at the Village Hall.

Jane Bream, Secretary. Contact Details.

Email:- J.bream711@btinternet.com



For information about **1st Great Barton Scout Group** visit their website

[Great Barton Scout Group \(gtbartonscouts.co.uk\)](http://gtbartonscouts.co.uk)

Girlguiding Suffolk



North West Division

Rainbows, Brownies, Guides and Rangers

Although there are no groups which currently meet in Great Barton, there are Guiding groups nearby in Moreton Hall, Bury St Edmunds, Thurston and Ixworth.

Girlguiding groups provide girls the opportunity to have fun and learn through indoor and outdoor activities.

Girls take part in challenges and gain badges for personal achievements. Depending on their age they may go camping or on day trips to take part in exciting outdoor activities.

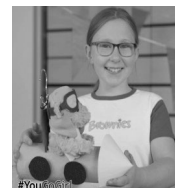
Parents can enrol their daughters in one of the local groups by visiting the Girlguiding website and completing the online form:

[Join Girlguiding](#)

Or call 01284 787507 for further details and help.

Leaders or non-uniformed volunteers are always required, so if you enjoy working with the girls, and would like a rewarding volunteering experience, or even would like to help reopen a group in Great Barton, volunteer now!

It can enhance your job prospects too!



Round The Village

Thoughts on Icepits Wood

Karen Webber

Icepits Wood is my sanctuary and my inspiration and it never disappoints me or fails to bring a smile to my face, no matter what emotions I am feeling as I enter it.

In this hideously complicated, technology filled, concreted-over world where it is difficult to find peace and isolation, it as an oasis of untouched natural beauty and the most understated free therapy anyone could wish for – without it I'm not sure I would have got through the last few years, particularly since the pandemic began.

It is a haven for wildlife and an undisturbed setting for plants and fungi.... this year I was privileged to find Scarlet Elfcup on a fallen branch in all its colourful glory; I have never seen it before in my life and I directed fellow walkers to pay a visit.

The trees provide shelter from the elements, a calm space from the wind and rain, a cool escape in the heat of summer.

When there is frost or snow it turns into Narnia with a beauty that takes my breath away. It is a treasure and a rarity, and I feel so strongly that it should be kept that way for the enjoyment of all of us and for the preservation of wildlife. Its wildness and unkemptness is the very thing that makes it so inspiring and calming and remaining untouched enables nature to work its miracles.....like the appearance of the Scarlet Elfcup.



Scarlet Elfcup

If it needs a little sympathetic woodland management occasionally that is understandable but, I hope with all my heart, that other than that, it will be left, as it has been for years, to its own amazing devices .



Time to get walking again!

John Harris

At this time of year we start to think about the mud drying up and getting out to walk in the beautiful English Countryside. But where to find new and interesting walks?



Walking in Suffolk:

<https://www.walkinginengland.co.uk/suffolk> has hundreds of walks to download and print for free, it also has books of walks, details of all the walking groups in the county and much more.

Whether you want to walk on your own or with a group, all the information is there in one place.

There is so much walking information on the web but it is difficult to find. Walking in Suffolk (part of the Walking in England website) has brought it together in one place. So whether you are walking from home, or away on holiday, you will be able to find a walk suitable for you

With walks from half a mile to twelve miles plus long, and a note of suitability for pushchairs and wheelchairs, everyone can find a walk to enjoy.

So home or away, check out the websites and get walking!

www.walkinginengland.co.uk
john@walkinginengland.co.uk

Round The Village

Bunbury Arms



Welcome to the new Bunbury Arms, our team is led by the owner Onur and our manager Jon, who both have an amazing passion for hospitality. We are a small independent company with a traditionally modern approach to hospitality. Some of you may have visited our other pub, the Swan in Long Melford.

A pub for us is at the heart of the community, and we have found over the last few years its importance has been felt even more greatly as locals pull together to support the community in the wake of the pandemic which we have been living through.

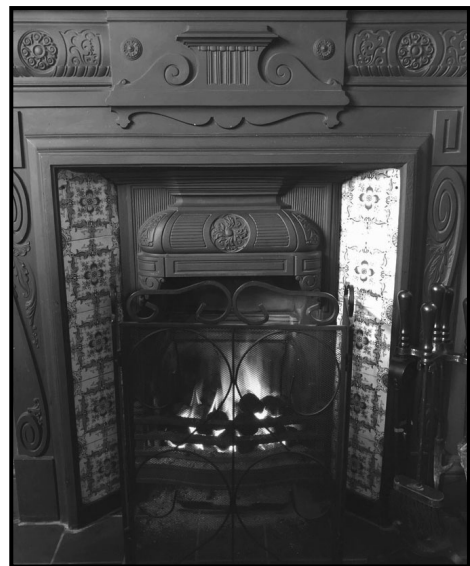
Everyone is welcome at the Bunbury Arms



whether you are popping in for coffee to meet a friend, looking to enjoy a delicious meal or a night of cocktails and fun, we are your local and are open six days a week - Tuesday to Sunday from 12pm. We pride ourselves on offering the best quality fresh local produce available.

We have a fabulous wine list & wider selection of beers and spirits available from the bar, as well as delicious cocktails shaken not stirred. The Carvery is still at the heart of the Bunbury Arms, served Tuesday to Sunday from 12pm. You can choose from a wide selection of freshly prepared vegetables, alongside a selection of locally sourced roasted meats.

To find out more about us and see what is happening at the Bunbury Arms, please follow us on social media or go to our website at



Could you write an article about any of our local places?

Please submit them to :

editorgbpcnewsletter@gmail.com

Round The Village

Congratulations and Well Done !

to Emma Hares in Year 5 at Great Barton Academy who won the school competition to draw an Easter themed picture for the front cover of the Newsletter.

We are sure her colourful drawing will have brightened up your day, when you received your copy through your door.

Thank you for all the lovely entries from the children .

It was difficult to choose the winner.

Well Done to you all!



Village Hall Management Committee

We would be delighted to hear from anyone who would be prepared to offer help with maintenance tasks, or help with the organisation of Car Boot Sales, etc.

If you can help, please contact
Diana Bilverstone:
diana.74@hotmail.co.uk
<http://greatbartonvh.onesuffolk.net/>

Editor's Conundrum

How well do you know your village?

Where would you see these magnificent Chimney Pots?
What is the history of this building? Why are they so ornate?



If anyone knows the answer please send your response to the Editor for printing in the Summer edition.

editorgbpcnewsletter@gmail.com



Village Hall Regular Events



<p>Mondays: Parish Council, Computer Club, Pilates, U3A Happy Quilters, Wine Society</p>	<p>Tuesdays: Second Chance, History Society, Badminton, Dog Training</p>	<p>Wednesdays: Tadpole Tunes, Linnet Investment, Pilates</p>
<p>Thursdays: Pilates, WI</p>	<p>Fridays: U3A Patchwork, Luncheon Club</p>	<p>Saturdays: Coeliac Society, Guide Dogs Fund-raisers, Film Night</p>
<p><i>Not all groups meet every week , so please make contact with the Clubs</i></p>	<p>Sundays: Region 7, Tea Dances, Football</p>	<p><i>See Page 25 for phone and website details of all our clubs</i></p>

Village Events and Travel

Great Barton Village Litter Pick and Spring Clean 2022



Saturday 2nd April

Great Barton Village Hall Carpark

10am – 1pm

Meet in the carpark at 10am to collect your equipment. Bring your own gloves. Children welcome with adult supervision. Full guidance will be provided for volunteers.

Any Questions ? Call Linda Harley 01284 787777

**Hot Dogs served from
12.30pm**



Village Hall News

The village hall is fully open and in use!

Although the hall was closed for a long time during the past two years, this time was used productively and the hall has benefitted from a little maintenance and decorating.

The village hall is used by many local groups for meetings and classes as well as being available to hire for private parties and functions.

The hall has three separate rooms to hire, of different capacities, to cater for lots of uses. All rooms have facilities to make refreshments and the hall has a large well-equipped kitchen. Plus, the added advantage of plenty of parking.

Celebrations for the Queen's Jubilee in June will be a wonderful way for the whole village to get involved with some community events – so keep an eye out for details of activities happening at the hall during the four-day bank holiday weekend.

Also, this year will see the return of a car boot sale on the playing field – **Sunday 14th August**.

The contact telephone number for booking the hall changed at the end of last year but should now have been updated everywhere.

If you would like to know more about what is happening at the hall or enquire about booking the hall for a meeting, class, party, or other event please contact Diana (Booking Clerk) on either diana.74@hotmail.co.uk or 01359 352357

Bus Routes in Great Barton

338 - Bury St Edmunds - Walsham-le-Willows - Market Weston - Diss

304 - Bury St Edmunds - Great Barton - Ixworth - Stanton - Wortham - Diss

304 - Bury St Edmunds - Stanton - Diss

338 - Bury St Edmunds - Stanton - Garboldisham

2 - Southolt - Kenton - Westthorpe - Bury St Edmunds
300 - Bury St. Edmunds - Pakenham - Ixworth - Ixworth Thorpe

Website: [Buses in Great Barton - View Bus Services and Stops \(geopunk.co.uk\)](http://Buses in Great Barton - View Bus Services and Stops (geopunk.co.uk))

• • • • •

Do You Know What's Happening in Great Barton?



**Keep Up To Date With All The Latest News
in the village from:**

The Website : greatbarton.suffolk.cloud

and on The Facebook Page: Greatbartonvillage

and By joining The Village Email Group:

Contact LINDA HARLEY @ infogbpc@gmail.com

Update from the Parish Council

We hope you like the new style of Parish newsletter, your Parish Council thought the newsletter could do with an update as it has been in the same format for several years. Please let us know what you think.

I hope you all managed to have a good Christmas and had some time with family. I know it was still difficult for some as Covid was still about and some people went down with it just before and over Christmas.

We had a lovely lunch for the vulnerable and elderly residents of the village at the Bunbury Arms and the Primary School Choir came and sung carols to them. It all went very well and my thanks go to The Bunbury Arms especially Vanessa for her help. I also want to thank the Choir and Mrs Ratley for their wonderful singing. Thank you also to the school children as they made cards to give to everyone. It was a lovely afternoon and everyone enjoyed it.

We have been working on your behalf to further projects within the village.

We are now in the process of arranging planting beside the newly constructed footpath between Downing Drive and School Lane. The plants we have chosen are appropriate for the site and also deer proof!

Your Council have continued to put forward the wants and needs of the parishioners. We have been very busy with lots of planning applications. I think lockdown has made people look at their homes and how they can improve them. We will continue to make sure the Neighbourhood Plan is complied with.

We are discussing with Suffolk County Council Highways the problems in the village, speeding, vegetation encroaching onto footpaths and lorry routes. We are aware that some villagers skirted back the path along Mill Road

Although we are grateful for this, it is not something we would recommend, as it can be dangerous.

The village will celebrate the Queen's Jubilee between 2nd June and the 5th June 2022. Plans are being put together, so watch this space, but we would like to have a Great Barton Party on Sunday 5th June. This will be on the playing field next to the Village Hall.

What we would like, is if instead of having individual Street Parties we could all come together on the field. So arrange your party then bring it with your table and chairs to the Village Hall with your food and we can all join together and celebrate. If you have a gazebo, bring that too as we cannot guarantee the weather. It has been tough for every one for the last 2 years and it would be good for everyone to be able to come together.

The village Litter Pick will be on Saturday 2nd April 2022. Collect your equipment at the Village Hall from 10am (please bring your own gloves). Hotdogs will be served from 12.30pm Please join us and tidy the village for the summer.

The Pandemic has made the Parish Council grateful for the lovely place we live in and the trees we have in the village. We are going to look at the specimen trees we have, so we can preserve those of note. There is a wonderful Chestnut in The Park that Peter Fisk can remember climbing and swinging on as a boy, in the 1930's.

A final thought concerning trees within the village. They provide a wide variety of benefits to society. Trees are living organisms and they naturally lose branches and fall.

Continued on page 15



Update from the Parish Council (continued)

The overall risk to human safety is low. There were 64 deaths in 10 years after 1999 which works out at a risk of 1 in 1,000,000.

There were 55 accidents per year with people being hit by trees, compared with 262,000 injuries where people were hit with footballs, 10,900 were also hit by children's swings and 2,200 by wheelie bins . That makes you think.

Maggie's Moans

We still have a problem in the village with speeding and we are well aware of that. We must all play our part and reduce our speed to the speed limit wherever we are.

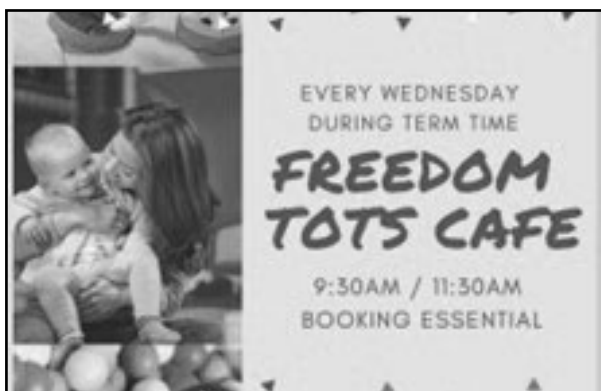
I lose count of the times I drive through the village at or below the speed limit and I am overtaken by vehicles flouting the speed limit. A Hovis lorry in Mill Road comes to mind. It is our village and we need to respect it.

Please when walking your dogs clear up after them and having done that please take it home or put it into one of the several dog bins around the village.

We continue to find dog poo on the playing field. Dogs should be supervised on the playing field and if that doesn't happen the management committee will have no choice but to ban dogs from that area which, would be a shame.

Finally a reminder again re the Queens Jubilee please join in and make it a true Celebration for a truly wonderful lady.

Maggie



Commercial Advertising rates for Great Barton Newsletter 2022

Size	Dimensions of type area	Cost per insertion
Back page - Colour	W185mm x H265mm	£120
Back inside cover - monochrome	W185mm x H265mm	£110
Full page	W185mm x H265mm	£100
Half page horizontal	W185mm x H130mm	£50
Quarter page (vertical)	W90mm x H130mm	£25
Large Box	W90mm x H60mm - (approx. 14 lines)	£13.50
Small Box	W90mm x H30mm - (approx. 7 lines)	£9.00
Small Ad	Text only (for sale, wanted, lost, or found)	£5.00 per item

To advertise your business in this Newsletter please contact:

Linda Harley c/o infogbpc@gmail.com



Great Barton Celebrates

**2nd June to 5th June
2022**

**Keep the dates free and
watch out for more information**

Programme so Far

Thursday: Coffee Morning

Friday: Afternoon Tea Dance (booking required, as limited space)

Saturday : Breakfast (booking required, as limited space) and

“Party at the Palace” on the Big Screen

Sunday: Big Jubilee Village Party on the playing field

**Bring your street party to the playing field, so we can
celebrate together.**

Jubilee Committee

Maggie Dunn 01284 787357

Peter Fisk 01359 231382

Jean Campbell 01284 787742

Mick Brabrook 01284 788147

Peter Turner email: pturner1941@gmail.com

Great Barton Celebrates

2nd June to 5th June 2022

(Sponsored by West Suffolk Council, The Parish Council and the Village)



Volunteers Required

We need people to help with the organisation of the Jubilee Celebrations.

Please contact Maggie Dunn
maggiedunn736@gmail.com

if you could offer help with any jobs on any of the celebration days e.g.

- ◇ *decorating the hall*
- ◇ *setting up the field on Sunday morning*
- ◇ *car parking attendants at the village Hall*
- ◇ *serving refreshments*
- ◇ *helping to organise activities at The Big Picnic*
- ◇ *distributing tickets for the events*
- ◇ *clearing up after the events etc etc*

For the Village Children

We will be purchasing a restricted number of Jubilee mugs to distribute to children under 16, who live in the Village.

To guarantee your child receives a limited edition celebration mug, they must be ordered in advance. Please send an email to Maggie Dunn maggiedunn736@gmail.com with the names and ages of each child and your address and phone number.

The mugs will be available for collection at the Big Picnic on Sunday afternoon 5th June 2022.

Can you help?

The next edition of the Village Newsletter will be a special Jubilee Edition.

We are looking for village input into this edition.

We need people to write some articles or even just pen a few lines on the theme of the Jubilee.

Example Ideas

- ⇒ Your memories of previous jubilee celebrations in Great Barton or elsewhere
- ⇒ A wordsearch or quiz about the Queen
- ⇒ Street party recipes
- ⇒ Party games for children
- ⇒ Poems or stories written by children (and adults!)
- ⇒ Any photos of jubilees in the past
- ⇒ History of the Queen in 300 words

or anything else you can think of on the theme of the Jubilee.

All articles for the Jubilee edition must be sent to the editor by no later than April 15th 2022.

editorgbpcnewsletter@gmail.com

Let's make it a special souvenir edition.

Due for distribution at the beginning of May



Parish Council News

Are you concerned about speeding traffic in Great Barton?

The Parish Council are so concerned that we want to join the Community Speedwatch UK Scheme to add to our current use of a Mobile Speed Camera at 7 points to reduce speeding in the village.



Community Speedwatch is a national initiative where pro-active members of local communities join with the support and supervision of their local police to record details of speeding vehicles using approved detection devices.

The Community Speedwatch scheme in all its aspects is covered very well at

<https://communityspeedwatch.org>.

Registered keepers of vehicles exceeding the speed limit are contacted - initially with a letter explaining the potential risks and consequences of their dangerous behaviour. Repeat offenders will receive a visit from the local police, irrespective of where they live. Beyond these friendly gestures, focused enforcement and criminal prosecution follow, based on the collated evidence. The emphasis is on personal education rather than enforcement, this approach has proved successful in many parts of the UK when it has been consistently undertaken.

We are looking for volunteers to give a couple of hours a week to work in small groups to measure vehicle speeds in and around Great Barton. All equipment, Hi-Vis and training will be provided.

If you are interested in being part of this programme to reduce speeding in Great Barton please contact:-

Gwyn James on 01284 788759

email: gwynjames1000@gmail.com

or Linda Harley on 01284 787777

infogbpc@gmail.com



Children's Playground

The Parish Council are exploring the possibility of applying for a grant with a view to improving the playground facilities next to the village hall. Before beginning the project, we will need opinions from both parents and children to determine whether it is felt that there is a need to improve the playground facilities.

If there is a need, we would like suggestions as to what is required.

This might also be an opportunity to include equipment which:

- could be used by all age groups and abilities, from toddlers to seniors.
- could be used in conjunction with classes held in the village hall.

To give you an idea of the kind of things that we could address, the following may be helpful, you may have other ideas.

- > safer floor surface
- > fencing/gates/security
- > seating and picnic areas
- > themed equipment e.g. outer space, jungle
- > litter bins
- > lighting



Your ideas are very welcome.

Please send your responses to stevetodd648@yahoo.com by 1st May 2022.

Parish Council News



What Matters to you in your local area?

Is it the state of the local park, the need for more activities for young people, making the roads safer, improving the local environment, local development needs?

Whatever needs changing in your neighbourhood, you could be just the person to change it by becoming a local councillor.

No other role gives you a chance to make such a huge difference to the quality of life for your local community.

Could I be a councillor?

The easy answer is 'almost definitely' as long as you are:

- British or a citizen of the Commonwealth
- At least 18 years old
- Registered to vote in the area or have lived, worked or owned property here for at least 12 months before an election

Being a councillor

Being an effective councillor requires both time, commitment and hard work. You need to balance the needs and interests of residents within the local government framework.

Before you consider becoming a councillor you may want to discuss it with your family and friends to make sure they understand what you are taking on.

If you are interested in making a difference, please contact either:

Linda Harley on 01284 787777 or



Maggie Dunn on 01284 787357

Local Councillor Contact Information

Borough Councillor:

Mrs. S Broughton

Manor House, Church Road,
Great Barton, IP31 2QR

Tel: 01284 787327 **Email:**
sarah.broughton@westsuffolk.gov.uk

Borough Councillor

Mrs. R Hopfensperger

17 Risbygate Street, Bury St Edmunds, IP33 3AA

Tel: 07876 683516 **Email:**
rebecca.hopfensperger@suffolk.gov.uk

County Councillor:

Mrs. R Hopfensperger

17 Risbygate Street, Bury St Edmunds, IP33 3AA

Tel: 07876 683516 **Email:**
rebecca.hopfensperger@suffolk.gov.uk

Member of Parliament:

Rt Hon Jo Churchill MP

10 Hatter Street, Bury St Edmunds, IP33 1LZ
Tel: 01284 752311

.....

Parish Councillors

Chairman: Maggie Dunn 01284 787357

Vice-Chair: Mathew Parker 01284 788307

Councillors:

- ⇒ Peter Fisk 01359 231382
- ⇒ David Clarke 01284 788730
- ⇒ Andy Baker 01359 352088
- ⇒ Steve Todd 01284 788733
- ⇒ Gwyn James 01284 788759

(The Parish Council currently has two vacancies)

www.greatbarton.suffolk.cloud/parish-council



Do you know where the village defibrillator unit is located and how to use it?

The defibrillator is located at the Village Hall (opposite the petrol station, on Elms Close). It is secured to an outside wall and is always available.

A defibrillator is a life saving device that can help save the life of someone experiencing a sudden cardiac arrest. They are easy to use, portable, with clear step-by-step instructions so anyone can use them, from a bystander to a trained professional. The machine gives clear spoken instructions or visual prompts – all you have to do is follow them and it won't



How to use a defibrillator

If you come across someone who is unconscious, unresponsive, not breathing or not breathing normally, they're in cardiac arrest. The most important thing is to call 999 and start CPR to keep the blood flowing to the brain and around the body. After a cardiac arrest, every minute without CPR and defibrillation reduces someone's chance of survival by 10 per cent.

If you're on your own, don't interrupt the CPR to go and get a defibrillator. If it's possible, send someone else to find one. When you call 999, the operator can tell you if there's a public access defibrillator nearby.

To use a defibrillator, follow these simple steps from the British Heart Foundation:

Step 1: Turn the defibrillator on by pressing the green button and follow its instructions.

Step 2: Peel off the sticky pads and attach them to the patient's skin, one on each side of the chest, as shown in the picture on the defibrillator.

Step 3: Once the pads have been attached, stop CPR and don't touch the patient. The defibrillator will then analyse the patient's heart rhythm.

Step 4: The defibrillator will assess whether a shock is needed and if so, it will tell you to press the shock button. An automatic defibrillator will shock the patient without prompt. Do not touch the patient while they are being shocked.

Step 5: The defibrillator will tell you when the shock has been delivered and whether you need to continue CPR.

Step 6: Continue with chest compressions and rescue breaths until the patient shows signs of life or the defibrillator tells you to stop so it can analyse the heartbeat again.

Parish and Local Council Information

Great Barton Parish Council

www.greatbarton.suffolk.cloud

PARISH COUNCIL MEETINGS are held at the Community Room in the Village Hall, commencing at 7.30pm.

Public Sessions are available for Parishioners to raise matters in which they are interested.

Notice of all Parish Council Meetings and any other important Parish Council information is posted regularly on the Parish Council notice boards:

- **outside the Post Office in The Street,**
- **by the Thurston Road mailbox,**
- **at the Mill Road/Livermere Road crossroads,**
- **outside the Primary School on School Road and on the website.**

Copies of the minutes of meetings of Great Barton Parish Council are available on the Village website.

If you would like to receive **updates on the activities of the Parish Council**, please email the **Clerk to the Council**.

Mrs. Linda Harley,
6 Garden Close,
Great Barton, IP31 2SY
Email: infogbpc@gmail.com



Parish Council Meeting

Dates 2022

March 21st April 25th May 16th

The full agenda for each meeting will be posted on the village noticeboards three days in advance.

Dates can also be found on the village website:

<http://greatbarton.suffolk.cloud/parish-council/meeting-dates/>

Are you tired of pot holes?

Overgrown vegetation at junctions?

Footpaths narrowed by weeds?

Flooding? Or faded road markings?



All of these items and many more can be reported through the Suffolk County Council Highways Reporting Tool which allows you to report new defects and monitor the status of existing reports. All you need to do is plot the location of your new report on the map and provide details of the issue by completing the text fields.



There is a direct link on the village website www.greatbarton.suffolk.cloud or you can access the tool through the Suffolk County Council website.



Great Barton's Annual Parish Meeting

Monday 25th April 2022 : 7.30PM

at Great Barton Village Hall

**An update on what is happening in your
Village, Borough and County**



Parish and Local Council Information

PLANNING APPLICATIONS GRANTED BY WEST SUFFOLK COUNCIL OCTOBER 2021 - FEBRUARY 2022

Further details of all applications can be found on the West Suffolk Council website

Property	Reference number	Details
The Knowle, Thurston Road	DC/21/2262/HH	Single storey rear elevation and 1 dormer on first floor rear elevation
Roundstone House, Livermere Road	DC/21/1676/HH	Open porch to front elevation
5 Brooklyn Cottages, Thurston Road	DC/21/1682/HH	2 storey rear extension following demolition of existing extension
1 Barton Place Cottages, East Barton Road	DC/21/1872/HH	(a) single storey rear extension (Following demolition of existing extension) (b) Decking area to rear
56 Conyers Way	DC/21/1930/TPO	TPO 033 (1961) - crown lift to three metres above ground level, 1 Laurel - fell, 1 Conifer - fell, 1 Ash, 1 Sycamore and 1 holly - crown lift to 4.5 metres above ground level garden side only, 1 Field Maple and 1 Sycamore - crown lift to 4.5 metres above ground level garden side only, 1 Hazel, 1 Sycamore and 1 Ash - crown lift to 3.5 metres above ground level garden side only and crown reduce back to growth points near the boundary line (belonging to 54 Conyers Way)
16 Anglesey Place	DC/21/2199/HH	Single storey front infill extension and canopy porch following demolition of existing single storey front infill extension and chimney stack.
Laurels, Fornham Road	DC/21/2301/HH	(a) 1.5 storey front extension (b) 1.5 storey rear and side extensions (following demolition of existing conservatory) (c) conversion of loft to habitable space with one rear dormer (d) 3 roof lights to front elevation

• • • • •



Welcome to Great Barton

New to the village?

If you or a neighbour have recently moved into the village you might like a free

'Village Welcome Pack'

Please contact Richard and Mary Leveritt: 01284 787556



Church Information

Thoughts from Father Ben

My family and I moved into the village at the end of October last year, leaving behind our residence in Bury St Edmunds, near to the King Edward school.

Since moving to Great Barton, our family had felt a bit isolated. No more bustle of people around us – funny noises in the night to get used to, including foxes barking and owls, everyone rushing to the window when the security light goes off at night, only to find a startled rabbit or Muntjac deer staring back at us!

However, when we have ventured out to various places, we have found people to be friendly and welcoming, and that has eased ‘new villager’ anxieties. And of course our wonderful church congregations have made us feel welcome and loved, and if that is all one ever really went to church for, that would be enough.

But there is also that sense of something greater than the sum of its parts evident – present in the village community but explored and embraced in its fullest sense at Holy Innocents (and indeed St Peters – a nod of recognition to our lovely Thurston family too!). There is a deep sense of community and welcome and hospitality and friendship and love at the heart of who we worship – God, the Creator, the Universe, Spirit – whatever name you wish to call that something bigger, deeper and greater than ourselves, it is the very ground of those things.

And it is in abundance here in Great Barton! It isn't long before it finds you. Because that divine movement wants to seek others out to include them. That's what's happening with us in Great Barton.

So I hope to be out and about once the weather is more clement, meeting you all and bonding into the village, and do remember that everyone

– **EVERYONE** – is welcome at Holy Innocents Church.

Holy Innocents' Church

www.greatbartonandthurston.org.uk

Service times can be found on our on-line magazine which is on our website or on our Facebook page.

Church Officers

Vicar : Reverend Ben Edwards

Email: revdbenjaminedwards@gmail.com

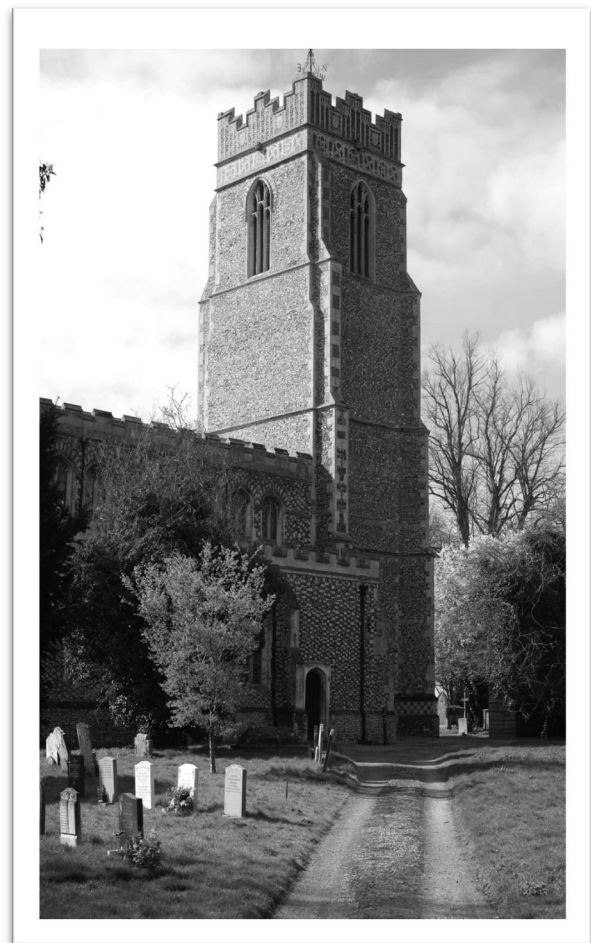
Churchwardens. Tim Frost 01284 787442

Angela Pearce 01359 230395

Vergers: Linda Scoles 01359 230392

PCC Secretary: Jane Dalton 01284 788613

Treasurer: Kathy Drakes 01284 787746



Church News

Church Refurbishment

These are the two windows which have been renovated.



The one on the right being in the porch, which was removed, reglazed and reinstated. The stained-glass window was removed, laid flat, heated and flattened,



professionally cleaned and reinstated.

New noticeboards for the porch, have been professionally made by a local company .

Our fund raising is still on going as we need to renovate or repair three further windows .

Do pop in to have a closer look at their beauty.

The Church Facebook pages:

Holy Innocents: <https://www.facebook.com/Holy-Innocents-Church-Great-Barton685807921585678/>

St Peter's: <https://www.facebook.com/St-Peters-Church-Thurston-1790473917903849/>

The Church Institute

The Church Institute is a lovely venue available for private and regular club bookings. It is also available for parties, celebrations, wedding receptions, funeral wakes and other general use.

For prices and enquiries please contact:
Linda Scoles 01359 230392 or
Reverend Ben Edwards at
revdbenjaminedwards@gmail.com



Montana Service Times

Montana on East Barton Road has a Roman Catholic mass at the following times:

Sunday 10.30 am

Weekdays (Mon - Fri) 8.15 am



**St. Andrew's Church, Sapiston
IP31 1SA**

Easter Monday Concert

Monday 18th April 2022 - 2.30pm



This is the first opportunity to hear the rare 1774 Argent Chamber Organ, rebuilt and played by Grant Vicat, accompanied by vocal and instrumental soloists.

FREE ENTRY

Retiring Collection for the Churches Conservation Trust

For more information please contact glessmith@waitrose.com

Church Information

FREEDOM CHURCH

Mill Road, Great Barton, Bury St Edmunds, IP31 2RU

SPRING DATES

| March | 2022 | April | May



PRESENCE - COMMUNITY - RESOURCE

APRIL

Sunday 3rd	Smaller Expressions
Friday 8th	Youth Cafe
Sunday 10th	Coffee & Testimony
Monday 11th	CAFE event
Friday 15th	HOAH Worship
Sunday 17th	Easter Sunday
Thursday 21st	CAFE event
Friday 22nd	Youth Life
Sunday 24th	Worship & Word Muddy and Wild
Wednesday 27th	Vision Leadership Gathering

MAY

Sunday 1st	Smaller Expressions
Sunday 8th	Coffee & Testimony
Friday 13th	Youth Cafe
Sunday 15th	Smaller Expressions
Friday 20th	HOAH Worship
Sunday 22nd	Worship & Word Muddy & Wild
Friday 27th	Youth Life
Sunday 29th	Day of Prayer
Tuesday 31st	BCDO & WILDFIRES

MARCH

Sunday 6th	Smaller Expressions
Friday 11th	Youth Cafe
Sunday 13th	Coffee & Testimony
Friday 18th	HOAH Worship
Sunday 20th	Smaller Expressions
Friday 25th	Youth Life
Sunday 27th	Worship & Word Muddy & Wild



*A heart for the community
A place where God dwells
A resource centre*

Educational Information



Calthorpe & Edwards Educational Foundation

This Foundation has existed for over 250 years to help young people under the age of 25 with study materials and books required for Further Education. In effect, this means any course which is NOT offered at Upper School/Community College. This includes NVQs which are not offered in schools.

The grant, which is usually limited to a maximum of 3 years, may be extended, at the discretion of the Trustees, by one year but to no person over the age of 25. To qualify the applicants must reside in one of 13 parishes:

Category A (known as the five Inner Parishes) includes Ampton, Ingham, Great & Little Livermere and Timworth.

Category B (known as the eight Outer Parishes) includes Culford, Fornham St. Genevieve, Fornham St. Martin, **Great Barton**, Ixworth, Troston, West Stow and Wordwell.

Should there be a waiting list, preference will be given to those from Category A. At present the annual grant, paid in three equal instalments, is:

± £300 per annum

However, this amount may vary from year-to-year dependent on the number of applicants.

Application forms can be obtained from the Clerk:

Mrs. R.G. Boswell, Chegwidden, Beauford Road, Ingham, Bury St. Edmunds IP31 1NW

or by email to: rgboswell@care4free.net

Applications must reach the Clerk by

Text only £5.00

Bury St Edmunds Mobile Library Service

Route 1: Every 4 weeks on Tuesdays

Oakhampton House 10.00 -10.20

School Lane 10.25 - 10.50

2022: , 29 March, 26 April, 24 May, 21 June, 19 July, 16 August, 13 September, 11 October, 8 November, 6 December

Route 12: Every 4 weeks on Thursdays

Brand Road 10.35 -10.45

2022: , 17 March, 14 April, 12 May, 9 June, 7 July, 4 August, 1 September, 29 September, 27 October, 24 November, 22 December

[Mobile libraries](#) | [Suffolk Libraries](#)



Quarter page size

You could advertise your business here

£25 for each edition

Contact Linda Harley 01284 787777

Large Box size

You could advertise your business here

£13.50 for each edition

Contact Linda Harley 01284 787777

Village Directory of Clubs and Societies

Badminton Club Mrs. Ann Tee, 22 Downing Drive, Great Barton, IP31 2RP	01284 788161	Great Barton Village Hall Diana Silverstone: Email : diana.74@hotmail.co.uk http://greatbartonvh.onesuffolk.net	01359 352357
Ballroom Dancing www.ballroomexperience.co.uk	-	Great Barton CE Primary Academy Mrs. Claire Ratley, School Road, Great Barton, IP31 2RJ	01284 787353
Bowls Club (Outdoor) Mr. Henny Van Holland, 32 Conyers Way, Great Barton, IP31 2SW greatbartonbowlsclub.webnode.com	01284 787242	Girlguiding Suffolk Jan Butler www.girlguidingsuffolk.org.uk	01284 787507
Children's Society Email: Elaineandmick@aol.com	-	History Society Jane Bream Email: j.bream711@btinternet.com	01284 702336
Church Institute Bookings Linda Scoles	01359 230392	Holy Innocents' Church Reverend Ben Edwards The Vicarage, Church Road, Great Barton, IP31 2QR Email: revmcrossman@gmail.com	01284 787554
Freedom Church Sarah Bullen (Administrator), Mill Road, Great Barton, IP31 2RU office@gbfc.org.uk www.freedomchurchgb.org	01284 788032	Holy Innocents' Choir Leader Joy Howell Email: joybolwell@hotmail.co.uk www.greatbartonandthurston.org.uk	-
Great Barton Allotment Association Lesley Linden Email: www.gballotments@gmail.com	-	Mothers' Union Pat Sheppard	01284 705540
Great Barton Community Woodland Mr. Mick Brabrook, 16 Downing Drive, Great Barton, IP31 2RP mick.brabrook@gmail.com www.gbcw.onesuffolk.net	01284 788147	Netball Club (Phoenix Flames) Mrs. Emma Gibson Email: gibsoneerj@btinternet.com	01284 788384
Great Barton Computer Club Julie King Email: secretary.gbcc@outlook.com www.gbcc.onesuffolk.net	-	Pathways (Pre-School) Mrs. Julie Goodwin, School Road, Great Barton, IP31 2RJ www.greatbartonpathways.co.uk	01284 788258
Great Barton Luncheon Club Mrs. Chris Johnson	01284 787687	Scout Group Mr. John Pitcher john.pitcher@btinternet.com www.gtbartonscouts.co.uk	01284 787787
Great Barton Thanksgiving Fund (Village Hall Management Committee) Mr. P Fisk, Blenheim, Thurston Road, Great Barton, IP31 2PW	01359 231382	Second Chance Stroke Club Peter Marsh Email: Peter.Marsh@stroke.org.uk	01449 737418
		Women's Institute Mrs. Kath Hopper	01284 787449
		West Suffolk Dog Training Society Sarah Connell	01284 767050

Advertisements

Commercial Advertising

The new Great Barton A4 newsletter is published 4 times a year. It is distributed to all households within the Parish and can also be viewed on the Village website as a Flipbook.

Special offer: pay for 3 editions and get the 4th for free!

All advertisements are accepted in line with the **Great Barton Advertisement Policy** and at the discretion of the Newsletter Working Group.

To advertise your business in this Newsletter please contact:

Linda Harley c/o infogbpc@gmail.com or phone **01284 787777**

Prices on page 15

HOME AND PROPERTY IMPROVEMENT

All types of interior and exterior work undertaken by a qualified, experienced local tradesman.

Carpentry; wall and floor tiling; renovation work; painting & decorating inside and out; built in wardrobes; shed re-roofing; fencing; gates; patios; small brickwork and re-pointing to name but a few.....

Have all those jobs you've been wanting to have done for ages, carried out under one roof!!

For a free quote and advice call or email:

John Ranson

01284 788248 07770932799

j.w.ransonbuilding@gmail.com

For a personal and trustworthy service, fully insured, and guaranteed quality work.

Over 20 years' experience, C & G qualified. Portfolio of photos available on request and references available.



Leon Brown

Arb-Agri Contracting

Tel: 01359 408521

Mobile Number: 07552393830

Email: leonbrown.28@hotmail.co.uk

****Tree Surgery Services ****

Dead Wooding & Crown Lifting

***Felling & Sectional Dismantling**

***Woodland Management**

***Crown Reductions**

***Hedge Cutting**

***Chipping**

***Garden & site Clearance**

***Fire wood**

General Ground Maintenance

Advertisements

ELITE FENCING & LANDSCAPING

All types of fencing erected.
Patios, Bases, Turfing, Decking.
Paths, Hard surface pressure washing.
All outdoor work undertaken.

Home 01359 221128, Mobile 07761 651567
Trevor@elite-fencing.co.uk
www.elite-fencing.co.uk






DAVID MARTIN

MOTOR VEHICLE ENGINEERS & CAR SALES

Station Hill, Thurston, Bury St Edmunds, Suffolk, IP31 3QU
 info@ davidmartinmotorengineer.co.uk
 Tel: **01359 230536** Mob: **07808 508864**
 Open Monday - Friday 8am - 5pm

 www.davidmartinmotorengineer.co.uk

Local, honest, friendly, reliable family run business (with over 150 years experience) offering car and light commercial vehicle repairs at competitive prices

<p>Free collection and delivery service from your home or workplace **within the local area**</p> <div style="text-align: center;">  </div> <p>Bookings & enquiries can be made via telephone, e-mail or text message (contact details above)</p>	<p style="text-align: center;">SERVICING ON ALL MAKES AND MODELS **including vehicles still under main dealer warranty**</p> <div style="display: flex; justify-content: space-between;"> <div style="width: 30%;"> <p>Cam belts Diagnostics Welding Brake overhauls</p>  </div> <div style="width: 30%; text-align: center;"> <div style="border: 1px solid black; padding: 5px; margin-bottom: 5px;"> <p>MOT's Class 4, 5 & 7 (minibus) (up to 3,500kg) **including free retest** within 10 working days</p> </div> <p style="text-align: center;">Courtesy car (subject to availability)</p> </div> <div style="width: 30%;"> <p>Exhausts Batteries Recoveries 4 Wheel alignment</p>  </div> </div>
--	---

We are proud to be members of the Good Garage Scheme, check our feedback @ www.goodgaragescheme.com

NO WORK IS CARRIED OUT WITHOUT FULL CONSENT FROM THE CUSTOMER

Advertisements



**Bespoke Upholstery Services &
Soft Furnishings**

Debbie Jordan

AMUSF Qualified Upholster
Traditional & Modern Techniques

Telephone 07771 966662

email : debbie@theupholsteryhut.co.uk

www.theupholsteryhut.co.uk

POWER PILATES

**A mix of Pilates, Fit ball and
weight training
for a stronger fitter you!!**

GT BARTON VILLAGE HALL MONDAYS @7PM

SUITABLE FOR ALL AGES

PLEASE BRING YOUR OWN BALL , MAT AND WEIGHTS

TEXT OR CALL 07833 023 055

For Sale: A mobility scooter, virtually brand new and hardly used due to lockdowns. Fitted with lights Price £250. A bargain! Call 01284 787507 to view.

Small Box size

You could advertise here

Contact Linda Harley



UNDER NEW MANAGEMENT

THE BUNBURY ARMS

GREAT BARTON

CARVERY | BAR CLASSICS | DRINKS | COCKTAILS

OPEN TUESDAY - SUNDAY

VISIT OUR NEW WEBSITE TO BOOK YOUR TABLE

WWW.THEBUNBURYARMS.COM



Larkbridge

Larkbridge Mortgages are Independent
Whole of Market Mortgage Specialists

Right on your Doorstep...

- Home Renovation Mortgages
- Equity Release and Later Life Lending Guidance
- High Net Worth and Large Loan Specialists
- Self-Build Mortgages
- Re-Mortgage to save money
- Face to Face & Online Meetings available
- Development & Investment Finance, including Buy to Let, Bridging & Second Charge Loans
- New Build & First Time Buyers
- Mortgage & Family Protection and Insurance Advisers
- Business & Self-Employed Protection Consultants
- Self-Employed Mortgage Advisers



Call us on:

01284 729250

or by email to:
admin@larkbridge.co.uk



www.larkbridge.co.uk